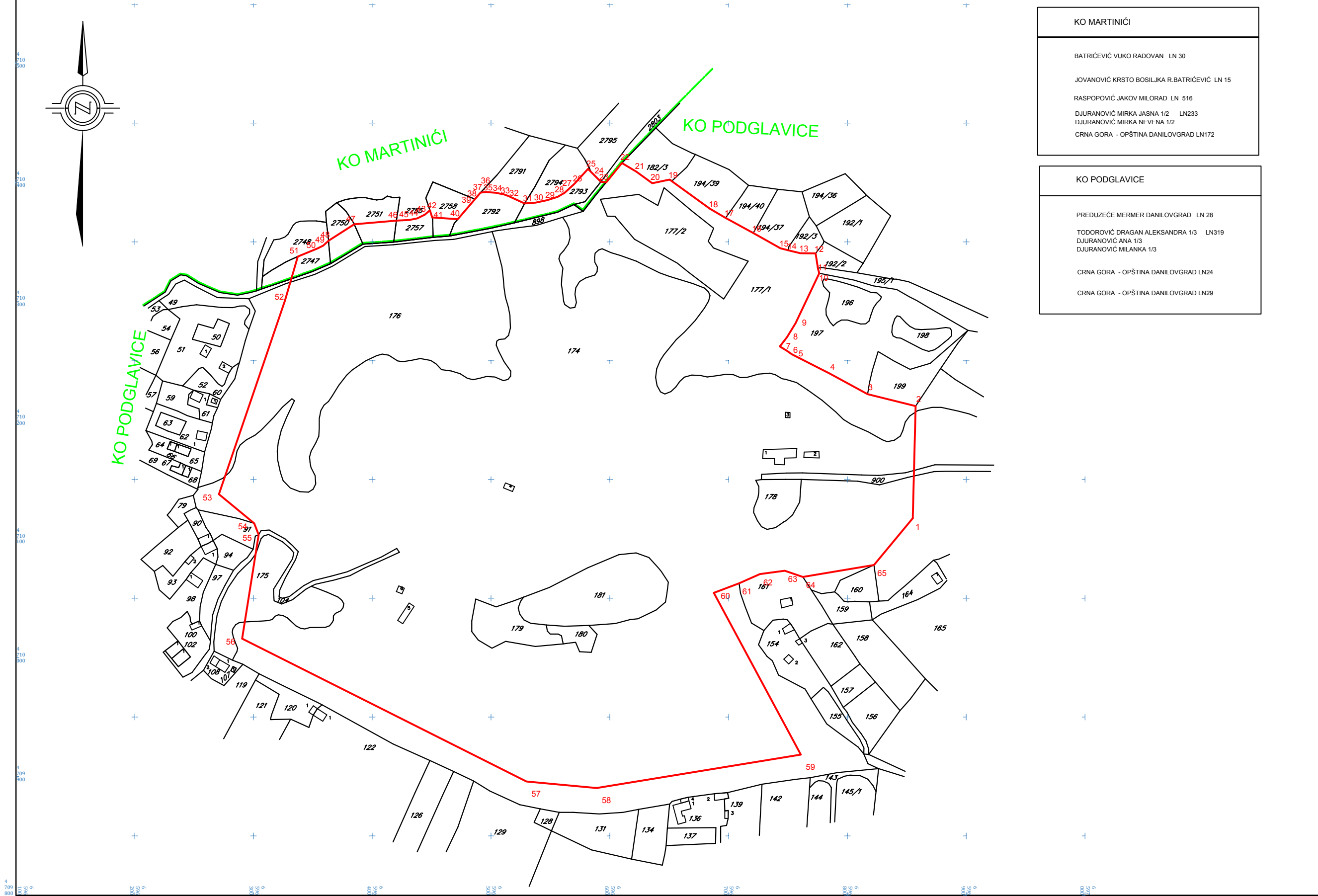


CRNA GORA

Opština : Danilovgrad Katastarska Opština : Podglavice i Katastarska Opština : Martinići



KO MARTINIĆI
BATRIČEVIĆ VUKO RADOVAN LN 30
JOVANOVIĆ KRSTO BOSILJKA R.BATRIČEVIĆ LN 15
RASPOPOVIĆ JAKOV MILORAD LN 516
DJURANOVIĆ MIRKA JASNA 1/2 LN233
DJURANOVIĆ MIRKA NEVENA 1/2
CRNA GORA - OPŠTINA DANILOVGRAD LN172

KO PODGLAVICE
PREDUZEĆE MERMER DANILOVGRAD LN 28
TODOROVIĆ DRAGAN ALEKSANDRA 1/3 LN319
DJURANOVIĆ ANA 1/3
DJURANOVIĆ MILANKA 1/3
CRNA GORA - OPŠTINA DANILOVGRAD LN24
CRNA GORA - OPŠTINA DANILOVGRAD LN29

LOKALITET KONCESIJE:
"Maljat" - Spuž-Danilovgrad

PROSTORNO -PLANSKA
DOKUMENTACIJA:
PROSTORNI PLAN
OPŠTINE DANILOVGRAD

PARAMETRI PODRUČJA
KONCESIJE:
POVRŠINA: 21 37 33.30 m²
OBIM : 2010.08 m.

KOORDINATE GRANIČNIH
TAČAKA PODRUČJA
KONCESIJE

1.6596854.98,4710117.34
2.6596857.38,4710211.81
3.6596816.93,4710221.83
4.6596785.04,4710239.27
5.6596753.43,4710255.36
6.6596748.98,4710258.33
7.6596743.08,4710261.95
8.6596749.06,4710269.77
9.6596756.37,4710281.58
10.6596776.34,4710323.62
11.6596775.20,4710327.48
12.6596773.21,4710340.30
13.6596760.41,4710340.51
14.6596750.45,4710342.90
15.6596743.62,4710344.60
16.6596720.70,4710357.44
17.6596697.43,4710370.23
18.6596684.14,4710377.88
19.6596650.35,4710402.49
20.6596635.65,4710399.37
21.6596622.50,4710408.95
22.6596610.14,4710416.36
23.6596596.96,4710400.20
24.6596592.44,4710400.51
25.6596581.55,4710411.44
26.6596570.05,4710398.89
27.6596561.89,4710391.36
28.6596555.89,4710387.85
29.6596546.89,4710385.00
30.6596537.40,4710382.99
31.6596528.14,4710382.31
32.6596514.86,4710388.46
33.6596510.40,4710390.13
34.6596507.89,4710390.59
35.6596504.14,4710391.28
36.6596495.69,4710392.06
37.6596491.17,4710391.46
38.6596486.44,4710385.92
39.6596481.68,4710380.54
40.6596471.94,4710369.06
41.6596450.36,4710370.64
42.6596448.50,4710376.65
43.6596444.13,4710372.81
44.6596437.83,4710369.74
45.6596431.15,4710368.46
46.6596420.22,4710367.96
47.6596384.86,4710364.78
48.6596363.19,4710351.05
49.6596358.66,4710346.90
50.6596354.16,4710344.60
51.6596337.32,4710337.68
52.6596326.45,4710300.37
53.6596270.81,4710137.55
54.6596300.65,4710113.16
55.6596304.30,4710103.49
56.6596290.46,4710016.04
57.6596529.84,4709895.77
58.6596588.91,4709890.26
59.6596760.73,4709918.49
60.6596687.51,4710054.60
61.6596708.75,4710062.59
62.6596726.39,4710070.35
63.6596747.17,4710073.20
64.6596762.48,4710068.04
65.6596822.40,4710078.08