



GOVERNMENT MONTENEGRO
MINISTRY OF TRANSPORT AND
MARITIME AFFAIRS



BULLETIN

ABOUT THE PORTS OF NATIONAL IMPORTANCE



MONTENEGRO

Area:

13.812 km².

Total border length - 614 km.

Coastal length - 293 km.

Area of the territorial sea - 2460,9km .

Length of the coastal part:

293 km.

The total length of the beaches- 73 km.

The longest beach is situated in Ulcinj - 12 km long.

Official language:

Montenegrin

In official use:

Serbian, Croatian, Bosnian and Albanian.

Credit cards:

Visa, Visa Electron, MasterCard,
Maestro, American Express, Diners.

National parks:

Montenegro is proclaimed as an ecological state (1991).

Five national parks:

NP Biogradska gora (5.650ha),

NP Skadar Lake (40.000ha),

NP Durmitor (39.000ha),

NP Lovćen (5.650ha),

NP Prokletije (16.630ha)

Population:

625,266 (census 2011)

Capital:

Podgorica 156,169 (census 2011)

Currency:

EURO (€)

Time zone:

GTM + 1

Rivers and lakes:

Longest river– Tara (141 km)

Largest lake – Skadar lake

Maximum sea temperature:

In the summer till 27.1° C

Number of sunny days in a year- 240

Swimming season– 180 dana

CALLING CODE: +382

Other important numbers:

Information: 1181

Ambulance: 124

Police: 122

The exact time: 125

Weather forecast: 044800200

Help on the road: 19807

'Wake up call' service: 1181

Telegram: 126

Touristic service: 1300 (24h)



The coast of Montenegro is situated on the south-eastern part of the Adriatic Sea, between Croatia and Albania. It is 293km long. The biggest depth of the territorial sea of Montenegro is estimated to be 260m. The area of the sea that belongs to Montenegro is around 2.460,9 km².

The coastal part of Montenegro has the typical features of the Mediterranean region and is surrounded by the mountain ranges of Orjen, Lovćen and Rumija coming from the inner parts of Montenegro.

Ports are good in general use and they are very important for Montenegro, making them available for use under the same conditions to all interested individuals and legal entities. According to the Law on Ports („SL.list CG“, number 51/08) the state has formulated and prescribed: the care of the port land, the port infrastructure and superstructure in state ownership, the form and manner of granting rights to use, as well as the regulation and coordination of port services by the operator, and the Government, according to the decision on determining the importance of ports, defined ports of national and local importance.

The ports that have been proclaimed to be of national importance are:

- The Trading Port of Bar
- The Port of Nautical Tourism – Marina Bar
- The Trading port of Kotor
- The Shipbuilding Port Bijela
- Fishing Port – Njivice

The applied model on the management of the ports of national importance has had an effect on the formation of the Port Authority of Montenegro, at the beginning of 2010. , with their headquarters situated in Kotor Muo - Peluzica 1.



The scope of work of the Port includes certain tasks related to the ports of national importance: the care of the construction, reconstruction, maintenance, management, protection and improvement of ports; application of domestic legislation, international agreements and standards that apply to the harbor; concession document preparation, participation in procedure for the concession and the Concession Contract, control of the execution of the concession contract; conclusion of concession agreements with the selected bidder, maintenance and use of port superstructure, which is owned by the state and which is not given in concession ;preparation of content and manner of keeping the register of the concession, determining maximum amount of fees for port services, ensuring the concessionaire to meet the requirements in accordance with national and international regulations governing the protection of human life at sea, prevention of environmental pollution from ships, protection of the marine environment and coastal areas, and civil liability for damage caused by pollution and other tasks that are specific to the jurisdiction

...

PORT OF BAR



Bar is the largest city, municipality and port on the coast of Montenegro. It is a modern city with wide boulevards, surrounded by Mediterranean vegetation. It represents the biggest touristic and nautical center at the entrance to the Adriatic Sea.

The city of Bar is situated at the latitude of 42° 6' and the longitude of 19° 6' while its elevation is 4m. Bar covers a surface area of 633 km². Population 42 368 (census 2011.).

The climate in Bar is very specific. Besides being one of the sunniest places in Southern Europe, with an average of 270 sunny days during the year, the climate is characterized by warm summers and mild winters. The average annual temperature is 16 degrees Celsius. In July the average temperature is 23 degrees C, and in January of 10 degrees C.

The Port of Bar is located at the entrance of the Adriatic Sea, at a distance of 976 nautical miles (nm) from the Suez Canal and 1190 nm to Gibraltar. It has significant competitive advantages over the Northern Adriatic ports, shortening the transit-time and creating savings in the cost of maritime transport. It is integrated with the Belgrade-Bar railway and the road traffic network. The Port is an important link in the intermodal transport chain.

The Port of Bar is a joint stock company whose main business is handling and storing the goods. At the port At least there are three operators:

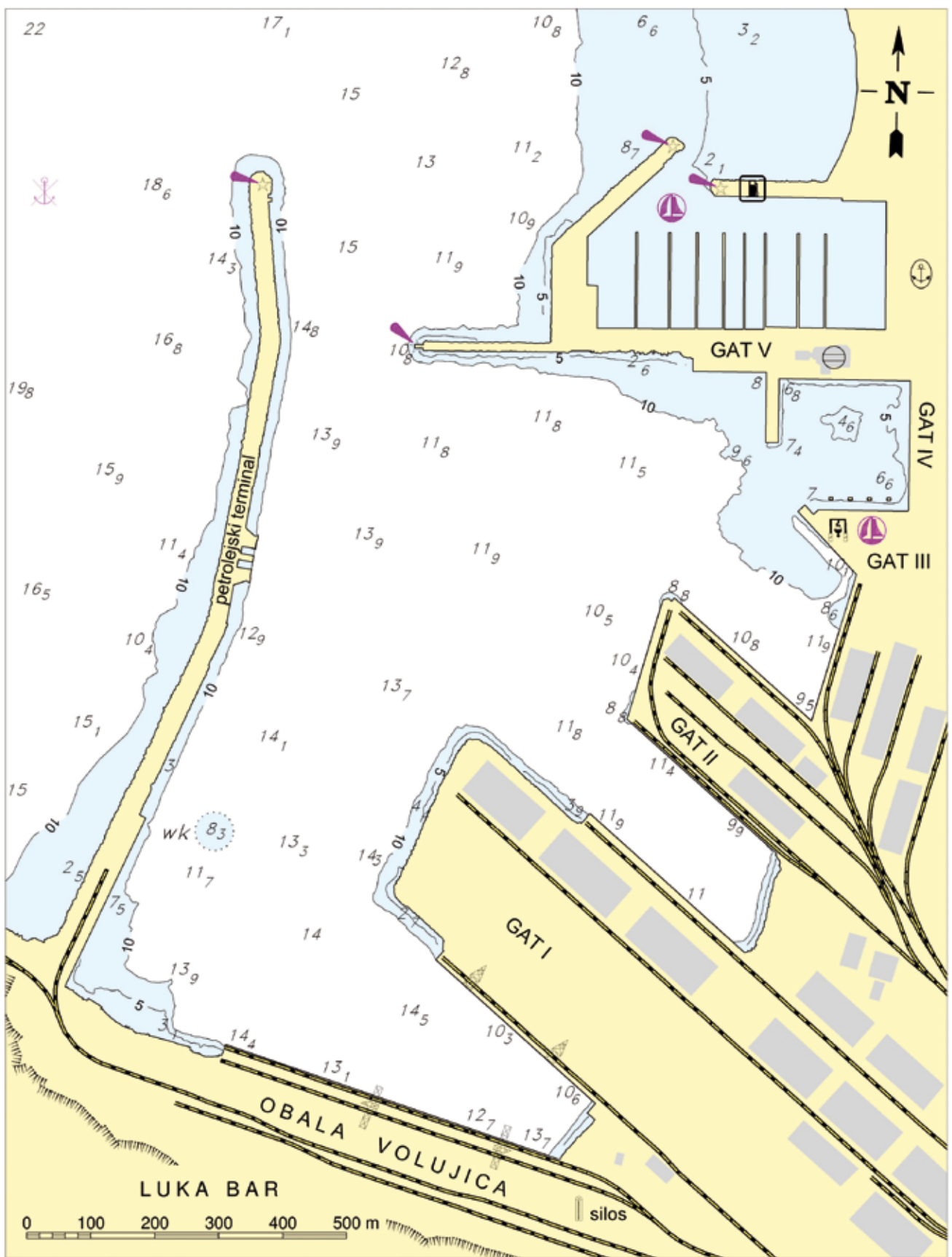
The Port of Bar:
handling and storage of foods.
receiving, storing and shipping Ro-Ro cargo units.
Reloading complete motor vehicles or parts of vehicles.
Areefer capacity of 4.500t
Closed storage-filling and emptying containers of concentrates.
Handling and storage of base oils, cereals, dry bulk car

KTGT:
Warehousing and storage
Unloading, handling and shipping of various goods
Charging and discharging of containers, complete (cleaning, washing and repair)
Packaging, repackaging, weighing goods
Supplying vessels with electricity, water, telephone lines.

Ocean Montenegro.
pilot service, mooring and departing ships, remorkaža, towing vessels, as well as ancillary activities: water delivery to ships, port authorities on transport vessels in the straits ports of Bar and transport ship supplier's cost ("Ship Chandler") to the following vessels at their disposal a tugboat "Topolica" and "Sozina", a pilot boat "Jelena" and mooring boat

Alexandria	991
Naples	377
Malta	462
Salonika	712
Koper	551
Burgas	963
Constance	1087

The distance between the Port of Bar and other major ports in the region in Nm



MARINA BAR



The Marina of Bar is located in the heart of the bay of Bar, at 42° 05' N and 19° 05' E; it has a very attractive geographic location.

A Marina is a specialized port on the coast of the sea, river and lakes, which is intended for the acceptance, storing, vessels with no crew, sheltering and equipping vessels used for leisure, sport and recreation. Anchorages are located in Marinas. In Montenegro, there are five marinas with all basic services.

It is situated in the city center, next to the town beach surrounded by quality infrastructure and supra-structure that includes hotels, restaurants, banks, post offices, and the Port Authority. Due to its favorable geographical location, the Marina of Bar is an ideal starting point for cruising near the picturesque Montenegrin coast, bays and harbors. Its advantages are numerous: a technical capacity, a high level of safety and care for people and property.

The marina bar is 600 berths in the sea and 250 on land-in the winter period, the maximum vessel length is 35m and the maximum draft is 5m. It covers an area of 55 000m² including the water area of 100,000m.

500 – commercial berths (470 berths, 30 berths for mega yachts longer than 24m)

200 – non-commercial berths for boats

200 – berths on land

In addition to safe moorings for yachts and boats, with full guarantee for their security, the services of yacht services are secured along with the water supply, electricity and fuel, the use of the bathroom and parking space for 300 vehicles.

Services:

- *Service hangar - Yacht and Marine engine service*
- *A parking place for 300 vehicles*
- *Gas station*
- *Getting information for safe navigation*
- *The use of bathroom and toilet*
- *Regular supply connections at the piers, water and electricity supply*
- *Restaurant, rent-a-car, post office*
- *Nearby are tennis courts, hotel, mega markets;*

Information for boaters and captains of yachts:

When a foreign yacht sails into Montenegrin seas, the captain or skipper of the yacht that enters the waters of Montenegro is obliged to sail, using the shortest route, to the port of the destination open to international traffic for clearance, for certification of the crew and passengers from the Port Authority. Before the arrival to the port of destination the captain, who is entering the waters of Montenegro, can send by fax or e-mail to the Harbor Master the copies of documents for border control and certification of the crew and passengers. The forms for the crew, passengers and the vignette are prescribed by the Ministry. A veterinary certificate issued by the competent institutions of the state belonging to the animal's owner must be submitted for animals on a yacht.

THE AGREEMENT ON THE BERT- NEEDED DOCUMENTS:

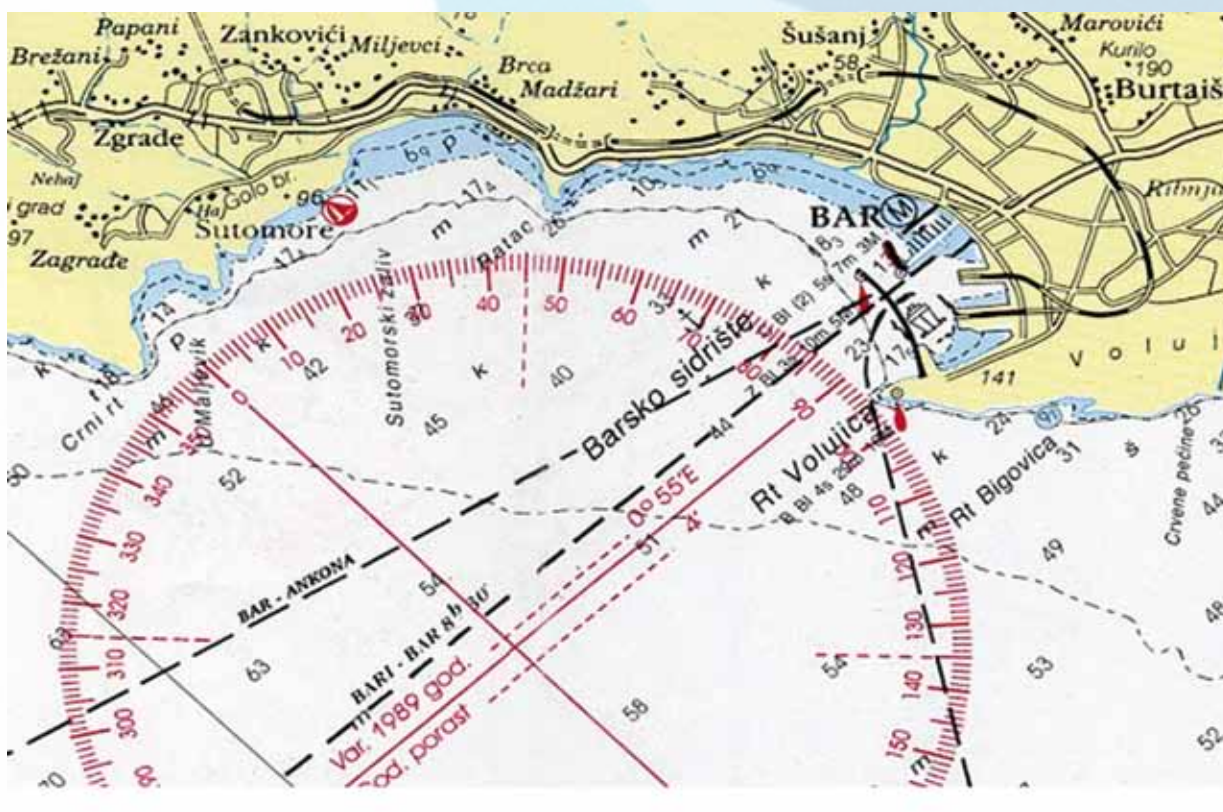
Personal documents (identity card or passport)

Insurance Policy

The registration document of the vessels (sailing permit)

If the vessel is owned by a legal person, in addition to the above documents a photocopy of the registry of the court must be submitted.

An authorization of the owner for access and use of vessels by a third party



Marine Site of the Marina of Bar (taken from the website of JSC "Marine Bar")

THE PORT OF KOTOR



Kotor is situated in the southeastern part of the bay bearing the same name, on a place where the sea reaches deep into the mainland with the geographic coordinates 42°25' N i 18°47' E. The town is located in the alluvion of the river Škurda which flows along its northern wall and the wellspring Gurdić emanating from its southern wall. Due to the unique blend of different cultures, Kotor was added to the list of world cultural heritage protected by UNESCO in 1979.

The Municipality of Kotor covers an area of 355 km². Population 22 799 (census 2011.).

Kotor has the status of a permanent maritime border crossing and of a port of international maritime traffic.

Kotor and the surrounding area has a typical Mediterranean climate, characterized by warm, dry summers and mild, wet winters. The average annual temperature is 15.2 ° C. The hottest month is July, with an average air temperature of 24.1 ° C and sea temperature 23.0 ° C. The most frequent winds of Kotor are those to the southeast and south. A large number of days in the year (213)

The Port of Kotor is located close to the Old Town of Kotor. The port has Wharf length of 665m, where 512m is located in the western part while 153m faces the river Skurda. The depth of the sea along the coast varies from 6m to 2m in the northern part of the south pier. This is why the northern part of the port is intended for mega yachts while the southern part is for small motor yachts and sailboats. The maximum length of a ship that can dock in the harbor is 300 meters.

BAR	42
BARI	125
TRIESTE	334
ANCONA	254
DUBROVNIK	40
PIRAEUS	715
OTRANTO	151

The distance between the Port of Kotor and other major ports in the region in Nm

ADRIATIC SEA

The coast can be functionally divided into 5 berths:

- Seafront I, berth length of 150m. The coast in this connection is equipped with 11 bollards.
- Seafront II, berth length of 100m. With this the coast has only a narrow strip with a width of 6 to 9m, which can be used by the ships.
- Seafront III, includes the southern quay length of 250m.
- River I is a berth in the northern part of the river Škurda, a distance of about 80m.
- River II is a berth on a distance of around 70m.

HERCEG
NOVI

PERAST

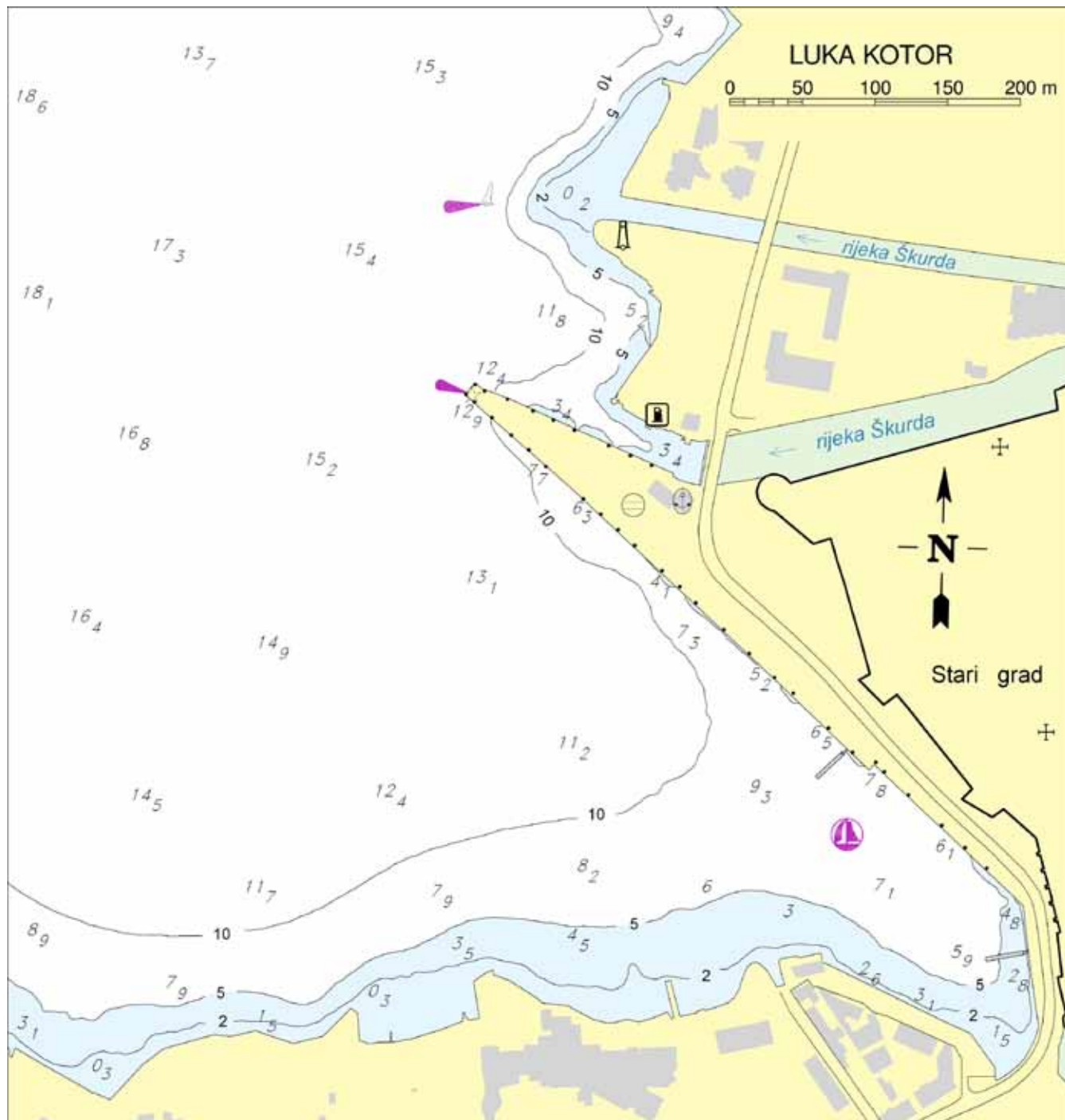
KOTOR

RT OSTRO

BOKA
KOTORSKA

TIVAT

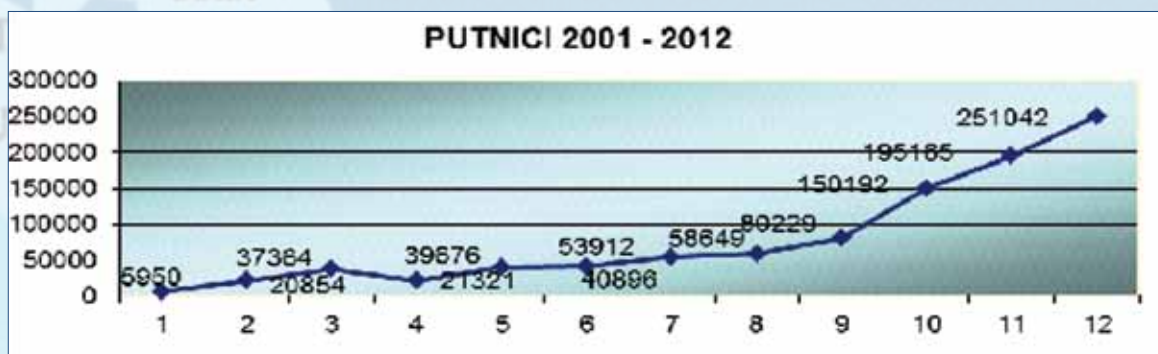
BODGORICA



DARU

GLACINJ

The operational quays, River I and II are equipped with 10 bollards. The coast is totally equipped with 61 rubber fenders. On the southern part of the sea, there are connections for the water, telephone and electricity (single phase and three phase), which are available to the vessels. The port takes all kinds of waste water, and waste from ships, and also offers a number of divers. It has the ISO 9001 standard of quality and ISO 14001 standard of the environment.



The number of passengers in the Port of Kotor in the period 2001-2012

The pilotage in the Port of Kotor is compulsory for all vessels over 1000 GRT.

- 1) Good weather conditions out-station pilot in position 42° 23' N and 18°33,4' E ;
- 2) Bad weather conditions out-inner pilot in position 42° 26,4' N and 18° 32,8' E ;

The pilots are available 24 hours a day and are asked for for more than 24 hours through the coastal radio stations. The pilot service is available on the VHF channel 16, citing "Kotor pilot" or "Pilots Kotor". The Office of Naval pilots is in Port Zelenika.

Ships that are longer than 150m during the voyage in the Bay of Kotor must place prominent signs ZV of the International Code of Signals.



The Bay of Kotor is officially listed in the Association of 28 most beautiful bays in the world (1997)

TOTAL AREA	87,33 KM ²
TOTAL VOLUME	2.412,306.000 KM ³
MAXIMUM DEPTH	65 M
MEDIUM DEPTH	27,3 M
BAY LENGTH	28,13 KM
COAST LENGTH	105,7 KM
INDENTED COASTLINE (K)	3,07
WIDTH OF THE BAY ENTRANCE	2,961 KM

Basic morphometric data on the Bay of Kotor

THE SHIPYARD BIJELA



On the very important and attractive geographic position, between the mountains Orjen (1.895m) and the entrance to one of the most beautiful bays in the world, the Bay of Kotor, you can find Herceg Novi. It spreads from the border crossing to the crest of the narrowest part of the Bay of Kotor (Verige - 300m width) of the total area of 235km². Population 30 992 (census 2011.).

The geographical coordinates of the town are: 42°27' N and 18°33' E

Herceg Novi has a very high average annual air temperature which was 16.2 ° C and even an annual average of 200 sunny days. In summer, in July and August, the city has an average of 10.7 hours of sunshine a day. Daily average temperature of the sea water during the summer months is from 22 - 26 ° C.

The Adriatic Shipyard Bijela is the largest ship repair yard in the southern part of the Adriatic. It was established in 1927, and today has an enormous experience and an extraordinary human, professional and technical capacity. Modern management ensures a reliable execution of contracts with uncompromising quality, competitive prices and terms, in accordance with the regulations of classification societies of the world. The top quality of the work done in this shipyard is confirmed by international certificates ISO 9002 and ISO 14000 of standard. At the moment the shipyard is working on the implementation of ISO 18000.

The shipyard also has the ability to rebuild ships of various sizes and purposes quickly and efficiently. It covers an area of over 120.000m² and an aquatic surface area of 350.000m².

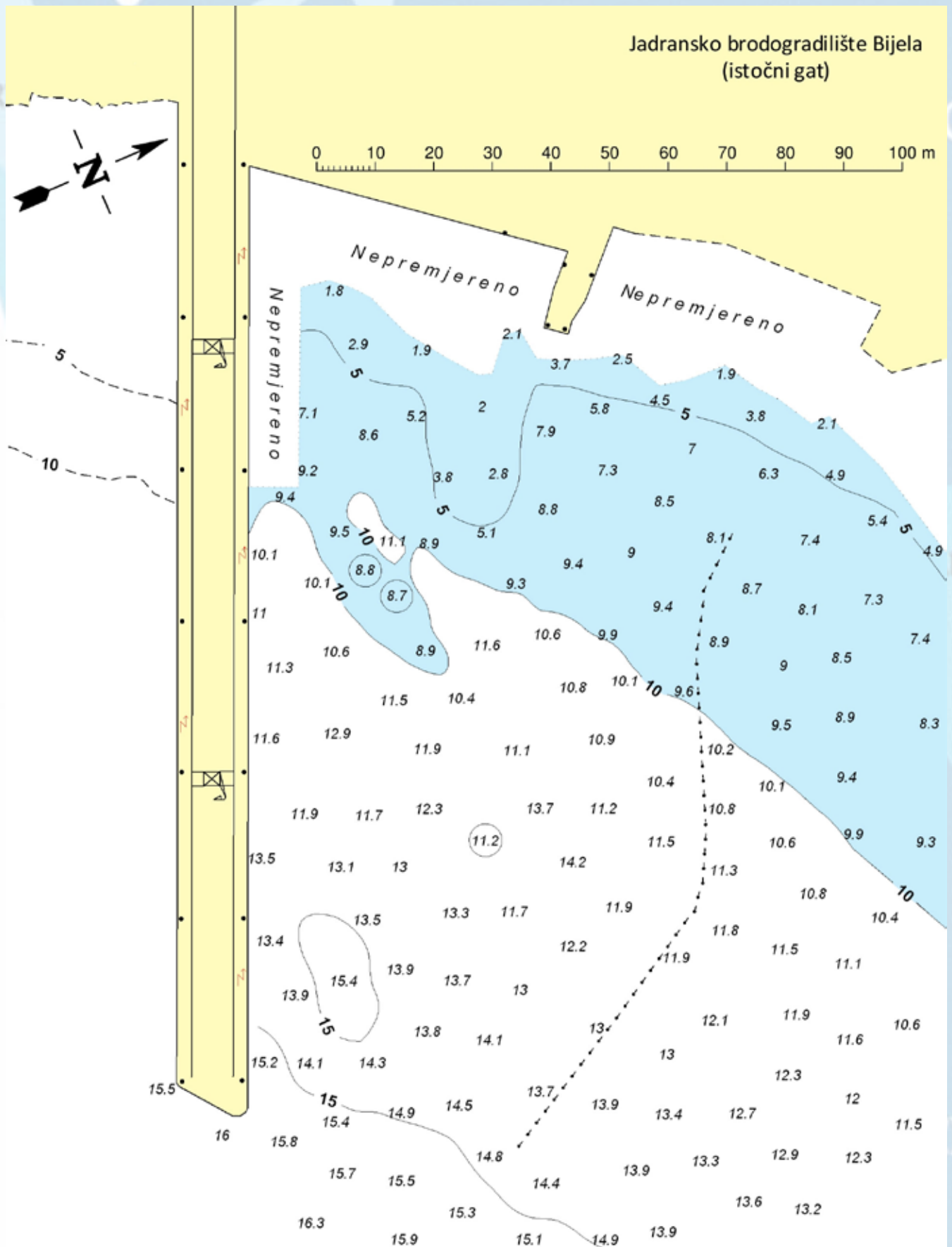
According to the purpose, the space is used for:

- Workers hall (14.900m²)
- Shipbuilding hall (3.150m²)
- Warehouses (15.000m²)
- Parking spaces (7.000m²)
- Restaurant-cafeteria (1.000m²)
- Internal roads (30.000m²)
- And more (50.000m²)

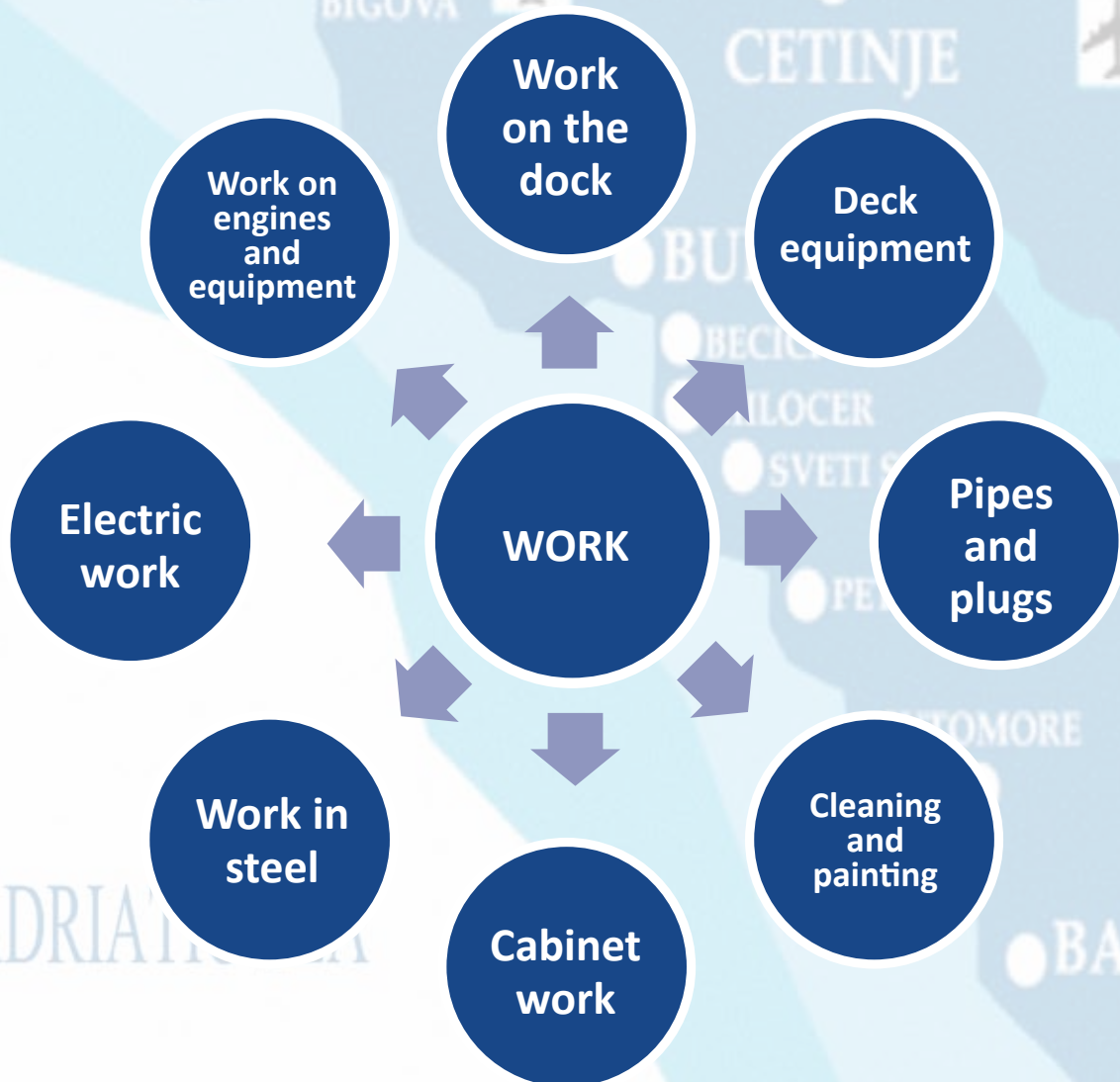
Within the Shipyard there is a training center for sailors and shipyard workers of the Shipyard itself, which is located in a new office building. The training center is equipped with modern equipment for training and meets all the standards and requirements set by international standards. The construction and equipping of training centers was financed by the company "Azalea Maritime Agency BV" from Rotterdam, The Netherlands, for the purposes of the Japanese company Mitsui OSK Lines.



Jadransko brodogradilište Bijela
(istočni gat)



The shipyard is fully equipped for the repair and reconstruction of ships and other vessels of all types and purposes, regardless of the size and scope of the damage made by the reconstructive operation. It has two floating docks which are 250 m and 184 m long, making it a total length of 1120m of operational quay. It has three tugboats, a large number of different types of lifters with the capacity from 2.5 to 50 tons, extensive and various power plants, modern means of communication along with all necessary workshop facilities and equipment.



In addition, the Shipyard is equipped even for smaller vessels such as: barges for various purposes with or without their own power, pontoons, work platforms etc.

Shipyard produces a wide range of marine equipment, such as pylons, pipelines with a diameter of 400 mm onwards, tanks and all kinds of steel structures, including process equipment.



LOVA

SITRO

Njemići

Orahovac

Ljuta

Dežin vt.

RISAN

Strp

Lipci

Morinj

PERAST

Stoliv

Lepetani

Kamenari

G. Morinj

Kruševica

D. Lastva

Bijela

Baošići

Đenovići

Kumbor

Krašići

Zelenika

Meljine

HERCEG NOVI

Rose

Igalo

Njivice

Dobrota

Prčanj

Moo

KOTOR

Trojica

Naljezići

Sibier

Radanovići

TIVAT

Prvutaka

Sv. Marka

Otok

Bjelila

Radovići

Glasnik 564m

Zambetici

Plava Spilja

Mamula

GRBALJ

Pobrdje

Lastva

KRTOLE

Pržna

Uv. Tratie

Bigova

Krimovica

R. Zekovica

Orjen

TIJA



ćen Jezerski vrh 1657m

nik 1748m

Ivanova korita

CETINJE

PODGORICA

Virpazar

Braći

Pobora

Stanisica

Paštrovska gora

Bečići

Pržno

Mitošcer

BUDVA

SV. STEFAN

Erzova pljazak

Rezevići

Mišići

Jaz

Sv. Nikola

Pemasća do

PETROVAC

Bulljanica

Čanj

Trsteno

Kati

Čanj 17

Ri Platumani

Ministry of Transport and Maritime Affairs

Address: Rimski trg 46; 20000 Podgorica
Telephone: +382 20 234 179; Fax: +382 20 234 331
www.minsaob.gov.me



**LUČKA UPRAVA CRNE GORE
MONTENEGRO PORT AUTHORITY**

Address: Muo, Peluzica 1 - 85330 Kotor
Telephone: +382 32 325 406; Fax: +382 32 325-404;
www.luckauprava.gov.me

JSC "LUKA KOTOR"

Address: Park Slobode 1; 85330 Kotor
Telephone: +382 32325 573; Fax: +38232325573
www.portofkotor.co.me

JSC "LUKA BAR"

Address: Obala 13 jula bb; 85000 Bar
Telephone: +382 30 300 400; Fax: +382 30 300 402
www.lukabar.me

JSC "KONTEJNERSKI TERMINAL I GENERALNI TERETI"

Address: Obala 13 jula bb; 85000 Bar
Telephone: +382 30 300 440; Fax: +382 30 300 442
www.ctgt.me



"OCEAN MONTENEGRO" Ltd.

Address: Obala 13 jula bb; 85000 Bar
Telephone: +382 30 311 577; Fax: +382 30 314 350
www.ocean-montenegro.com

JSC "MARINA BAR"

Address: Obala 13 jula bb; 85000 Bar
Telephone: +382 30 315 166; Fax: +382 30 317 786
www.marinabar.org

JSC "BRODOGRADILIŠTE BIJELA"

Address: 85343 Bijela
Telephone: +382 31 671 080; Fax: +382 31 671 108
www.asybijela.com

JP "MORSKO DOBRO"

Address: Ulica Popa Jola Zeca bb; 85310 Budva
Telephone: +382 33 452 709; Fax: +382 33 452 685
www.morskodobro.com

**DEPARTMENT OF HYDROMETEREOLOGY
AND SEISMOLOGY- MONTENEGRO**

Address: IV proleterske brigade 19, 20000 Podgorica
Telephone: +382 20 655 183; Fax: +382 20 665 197;
www.meteo.co.me

PORT AUTHORITIES AND OFFICES

Port Bar	+38230 312 733	+38269 290 274
Port Kotor	+38232 304 312	+38269 681 504
Branch office Ulcinj	+38230 421 780	+38269 290 258
Branch office Budva	+38233 451 227	+3869 290 2572
Virpazar	+38220 711 126	+38269 290 274
Branch office Tivat	+38232 671 262	+38269 040 063
Branch office Zelenika	+38231 678 276	+38269 086 220
Branch office Herceg Novi	+38231 678 276	+38269 086 220