

REPUBLIKA CRNA GORA

ZAVOD ZA STATISTIKU



ŽENE I MUŠKARCI U CRNOJ GORI

**PODGORICA, 2006.
PRVO IZDANJE**

IZDAVAČ: ZAVOD ZA STATISTIKU CG

IV Proleterske br. 2, Podgorica
Tel. 241 – 206
Fax ; 241 270
e – mail statistika@cq.yu
web: www.monstat.cg.yu

Za izdavača: Ilija Stanišić, direktor

**Redakcioni odbor: Gojko Dragaš, Jovana Pješčić,
Zdenka Brajović**

**Stručni saradnici : Dragica Popivoda, Biljana Sekulović,
Snežana Remiković**

Tehnički urednik: Radmila Šišević

Prevod: Vladimir Radenović

Štampa:

Tiraž: 600 primjeraka

**Prilikom korišćenja podataka iz ove publikacije
obavezno navesti izvor**

PREDGOVOR

Publikacija "Žene i muškarci u Crnoj Gori" daje kratak prikaz stanja žena i muškaraca u našem društvu. Nastala je kao odgovor na sve veće potrebe korisnika da se stanje u društvu, između ostalog, prati i preko statističkih podataka prikazanih prema polu.

Publikacija se sastoji od tabela i grafikona bez tekstualne analize podataka i može poslužiti kao izvor informacija svim korisnicima podataka koji su zainteresovani za položaj žena i muškaraca i za jednakost polova u Crnoj Gori.

Podaci koji su prikazani u ovoj publikaciji odnose se na sljedeće oblasti:

- Stanovništvo
- Obrazovanje
- Socijalna zaštita
- Kriminalitet
- Zaposlenost i zarade

Zahvaljujemo se Kancelariji za ravnopravnost polova Vlade Republike Crne Gore na pomoći pri izradi ove publikacije.

Direktor, Ilija Stanišić

SADRŽAJ

	<u>PREDGOVOR</u>	3
1.	<u>STANOVNIŠTVO</u>	7
2.	<u>OBRAZOVANJE</u>	22
3.	<u>SOCIJALNA ZAŠTITA</u>	30
4.	<u>KRIMINALITET</u>	33
5.	<u>ZAPOSLENOST I ZARADE</u>	36

STANOVNIŠTVO

Podaci o broju stanovnika prikupljeni su u popisima sprovedenim od 1948. - 2003.godine. Pri korišćenju popisnih rezultata, treba voditi računa o tome da ne postoji potpuna uporedivost definicija stalnog, odnosno ukupnog stanovništva u popisu 2003.i ranijim popisima. Naime,u popisima 1971 - 1991.godine pored stanovništva u zemlji u stalno stanovništvo su ubrajani i crnogorski građani na privremenom radu u inostranstvu, kao i članovi koji su s njima boravili u inostranstvu.U skladu s međunarodnim preporukama,u popisu 2003.godine, osim stanovništva u zemlji, u sastav stalnog stanovništva ulaze crnogorski građani čiji je rad, odnosno boravak u inostranstvu kraći od godinu dana, kao i strani državljani koji u našoj Republici rade ili borave u svojstvu članova porodice duže od godinu dana.

Stanovništvo prema polu i starosti predstavlja broj lica određenog pola, grupisanih po starosti, prema navršenim godinama života. U tabeli je prikazana starosno - polna struktura preko apsolutnih frekvencija i / ili preko procentualne distribucije.

Podaci o bračnom stanju prikazani su za stanovništvo staro 15 i više godina, I odnose se na formalno-pravni status lica (zakonsko bračno stanje), a ne na faktičko stanje u okviru porodičnih zajednica.

Podaci o nacionalnoj ili etničkoj pripadnosti rezultat su slobodnog izjašnjavanja stanovnika, odnosno roditelja, usvojlaca ili staratelja kada su u pitanju djeca mlađa od 15 godina.

Statistika rođenih obuhvata svu djecu rođenu u posmatranoj godini (živorođenu i mrtvorodenu). Živorodnim djetetom smatra se dijete koje je,po rođenju, pokazivalo znake života (disanje i kucanje srca) makar i za najkraće vrijeme,bez obzira na trajanje trudnoće majke. Mrtvorodnim smatra se ono dijete koje je rođeno bez ikakvih znakova života, pod uslovom da je nošeno duže od 28 nedjelja.

Statistika umiranja (mortaliteta) obuhvata svaki slučaj smrti.Šifriranje i agregiranje podataka o osnovnom uzroku smrti vrši se prema Međunarodnoj klasifikaciji bolesti, X revizija (MKB - 10).

Umrli prema vodećim uzrocima smrti predstavlja broj umrlih lica čiji je uzrok smrti najfrekventniji.

Specifična stopa fertiliteta za žene uzrasta 15 - 19 godina predstavlja odnos broja djece čije su majke navedene starosti na 1000 žena te starosti u ukupnoj populaciji.

Stopa maternalne smrtnosti predstavlja broj žena umrlih u trudnoći, na porođaju ili u babinjama, zbog uzroka povezanih sa ovim stanjima, tokom kalendarske godine, a na 10000 živorođenih.

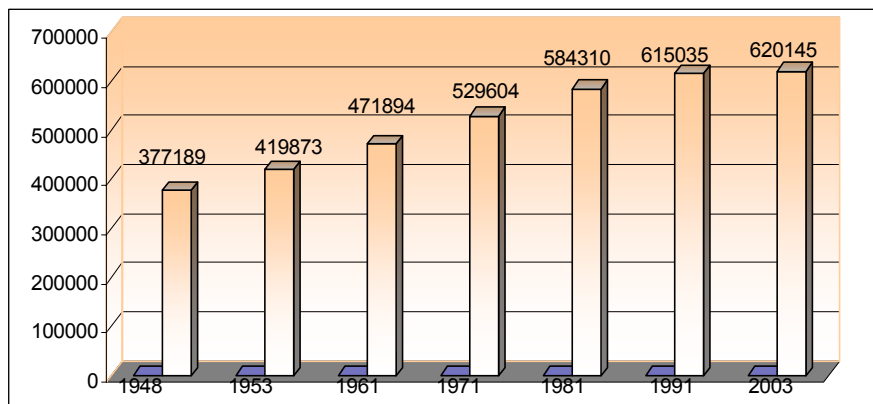
Površina i gustina naseljenosti

Teritorija	Površina km ²	1991		2003	
		broj stanovnika	gustina naseljenosti	broj stanovnika	gustina naseljenosti
CRNA GORA	13812	615035	44.5	620145	44.9

Porast stanovništva po popisima 1948. – 2003.

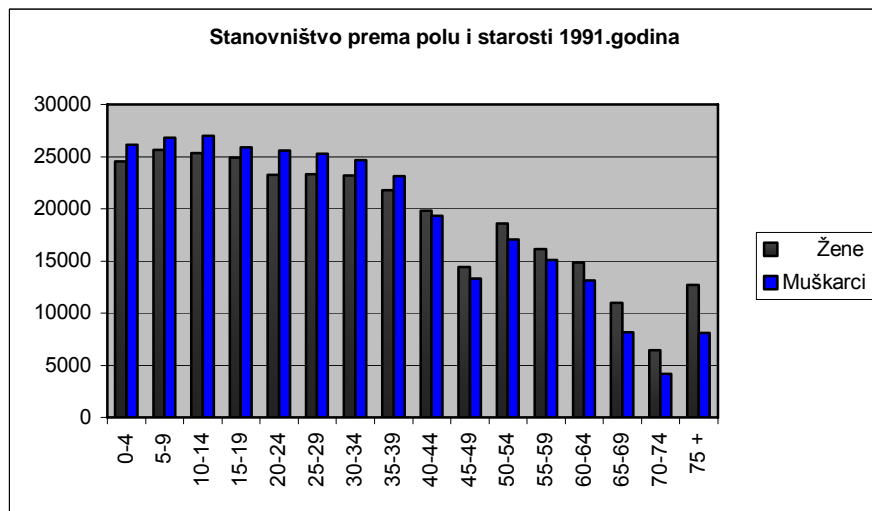
Godina	Broj stanovnika	Lančani indeks	Indeks porasta (bazna 1948)
1948	377189	-	100.0
1953	419873	111.3	111.3
1961	471894	112.4	125.1
1971	529604	112.2	140.4
1981	584310	110.3	154.9
1991	615035	105.3	163.1
2003	620145	100.8	164.4

Porast stanovništva po popisima



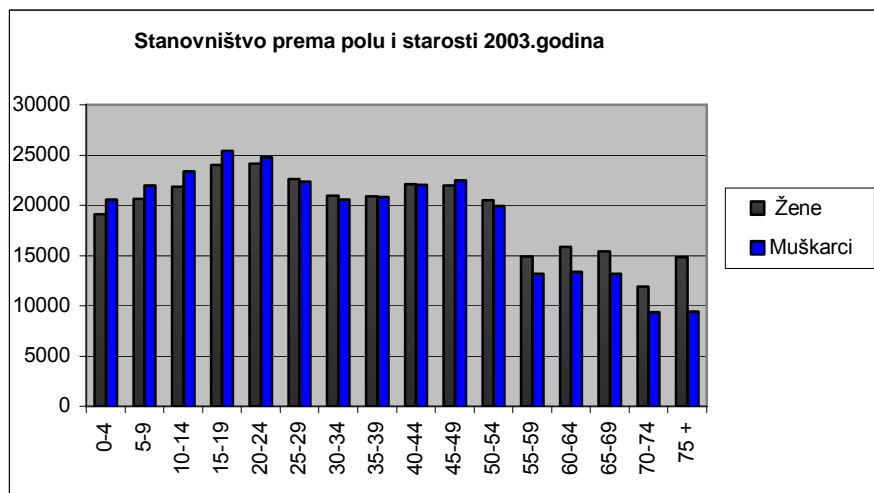
Stanovništvo prema polu i starosti 1991.

Starost	Žene	Muškarci	Struktura %		Žena na 100 muškaraca
			žene	muškarci	
Ukupno	309104	305931	100.0	100.0	101
0-4	24558	26150	7.9	8.5	94
5-9	25616	26797	8.3	8.8	96
10-14	25351	26986	8.2	8.8	94
15-19	24885	25897	8.1	8.5	96
20-24	23278	25591	7.5	8.4	91
25-29	23332	25263	7.5	8.3	92
30-34	23171	24639	7.5	8.1	94
35-39	21780	23123	7.0	7.6	94
40-44	19821	19354	6.4	6.3	102
45-49	14409	13333	4.7	4.4	108
50-54	18615	17060	6.0	5.6	109
55-59	16111	15107	5.2	4.9	107
60-64	14855	13130	4.8	4.3	113
65-69	11009	8186	3.6	2.7	134
70-74	6431	4177	2.1	1.4	154
75 +	12684	8116	4.1	2.7	156
Nepoznato	3198	3022	1.0	1.0	106



Stanovništvo prema polu i starosti 2003.

Starost	Žene	Muškarci	Struktura %		Žena na 100 muškarca
			žene	muškarci	
Ukupno	314920	305225	100.0	100.0	103
0-4	19111	20560	6.1	6.7	93
5-9	20626	21950	6.5	7.2	94
10-14	21821	23393	6.9	7.7	93
15-19	23999	25388	7.6	8.3	95
20-24	24171	24792	7.7	8.1	97
25-29	22632	22356	7.2	7.3	101
30-34	20963	20565	6.7	6.7	102
35-39	20908	20797	6.6	6.8	101
40-44	22111	22064	7.0	7.2	100
45-49	22002	22494	7.0	7.4	98
50-54	20523	19913	6.5	6.5	103
55-59	14900	13171	4.7	4.3	113
60-64	15840	13393	5.0	4.4	118
65-69	15442	13208	4.9	4.3	117
70-74	11889	9351	3.8	3.1	127
75 +	14845	9425	4.7	3.1	158
Nepoznato	3137	2405	1.0	0.8	130



Stanovništvo prema polu i velikim starosnim grupama, 2003.

	Ukupno	Žene	Muškarci	Struktura u %		Žene na 100 muškaraca
				žene	muškarci	
<i>Ukupno</i>	620145	314920	305225	100,0	100,0	103
<i>0 – 19</i>	176848	85557	91291	27.2	29.9	94
<i>20 – 39</i>	177184	88674	88510	28.2	29.0	100
<i>40 – 59</i>	157178	79536	77642	25.3	25.4	102
<i>60 - 79</i>	93393	51642	41751	16.4	13.7	124
<i>80 +</i>	10000	6374	3626	2.0	1.2	176
<i>Nepoznato</i>	5542	3137	2405	1.0	0.8	130

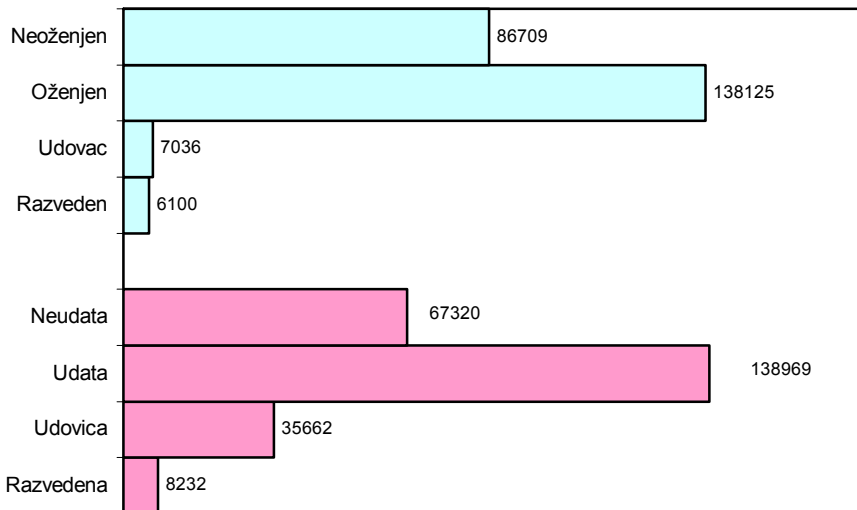
Stanovništvo prema polu i nacionalnoj ili etničkoj pripadnosti, 2003.

Nationalnost	Ukupno	Žene	Muškarci	Struktura u %		Žene na 100 muškaraca
				žene	muškarci	
Total	620145	314920	305225	100,0	100,0	103
<i>Crnogorci</i>	267669	136968	130701	43.5	42.8	105
<i>Srbi</i>	198414	99734	98680	31.7	32.3	101
<i>Jugosloveni</i>	1860	848	1012	0.3	0.3	84
<i>Albanci</i>	31163	15355	15808	4.9	5.2	97
<i>Bošnjaci</i>	48184	24138	24046	7.7	7.9	100
<i>Egipćani</i>	225	104	121	0.0	0.0	86
<i>Italijani</i>	127	57	70	0.0	0.0	81
<i>Makedonci</i>	819	489	330	0.2	0.1	148
<i>Mađari</i>	362	225	137	0.1	0.0	164
<i>Muslimani</i>	24625	12492	12133	4.0	4.0	103
<i>Njemci</i>	118	67	51	0.0	0.0	131
<i>Romi</i>	2601	1267	1334	0.4	0.4	95
<i>Rusi</i>	240	160	80	0.1	0.0	200
<i>Slovenci</i>	415	261	154	0.1	0.1	169
<i>Hrvati</i>	6811	3957	2854	1.3	0.9	139
<i>ostali</i>	2180	1039	1141	0.3	0.4	91
<i>Neizjašnjeni i neopredijeljeni</i>	26906	14037	12869	4.5	4.2	109
<i>Regionalna pripadnost</i>	1258	682	576	0.2	0.2	118
<i>Nepoznato</i>	6168	3040	3128	1.0	1.0	97

Stanovništvo staro 15 i više godina prema bračnom stanju, polu i starosti, 2003.

Starost	Bračno stanje									Nepoznato	
	neu-	neože-	udata	oženjen	udo-	udovac	razve-	razve-	žene	muš-	
	data	njen			vica		dena	den			karci
Ukupno	67320	86709	138969	138125	35662	7036	8232	4054	3179	3398	
Ispod 20	21600	23661	1043	160	8	5	22	6	1326	1556	
20 - 24	16782	22593	6826	1709	38	10	185	42	340	438	
25 - 29	9168	14844	12718	7128	123	16	473	163	150	205	
30 - 34	4708	8241	15178	11843	242	24	708	323	127	134	
35 - 39	3020	5311	16383	14858	483	71	927	443	95	114	
40 - 59	6798	9251	60856	64711	7694	1214	3835	2190	353	276	
60 i više	4476	1884	24658	36878	26541	5607	2012	856	329	152	
Nepoznato	768	924	1307	838	533	89	70	31	459	523	
Prosječna starost	28,7	27,5	45,6	50,4	67,7	69,5	49,2	49,5	30,3	25,9	

Stanovništvo staro 15 i više godina prema bračnom stanju i polu 2003.

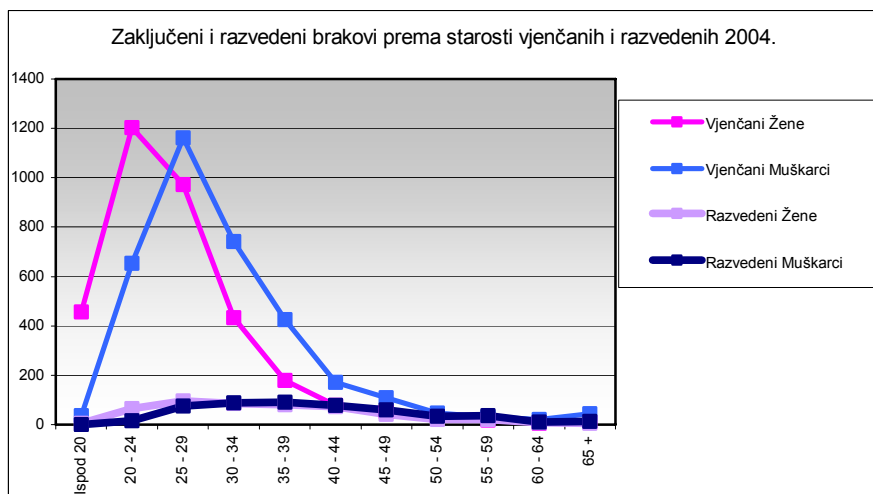


Stanovništvo staro 15 i više godina prema bračnom stanju, polu i starosti(u%), 2003.

Starost	Bračno stanje									
	neu- data	neože- njen	udata	ože- njen	udovica	udo- vac	razve- dena	razve- den	nepoznato	
									žene	muš- karci
Ukupno	100,0	100,0	100,0	100,0	100,0	100,0	100,0	100,0	100,0	100,0
<i>Ispod 20</i>	32,1	27,3	0,8	0,1	0,0	0,1	0,3	0,1	41,7	45,8
<i>20 - 24</i>	24,9	26,1	4,9	1,2	0,1	0,1	2,2	1,0	10,7	12,9
<i>25 - 29</i>	13,6	17,1	9,2	5,2	0,3	0,2	5,7	4,0	4,7	6,0
<i>30 - 34</i>	7,0	9,5	10,9	8,6	0,7	0,3	8,6	8,0	4,0	3,9
<i>35 - 39</i>	4,5	6,1	11,8	10,8	1,4	1,0	11,3	10,9	3,0	3,4
<i>40 - 59</i>	10,1	10,7	43,8	46,8	21,6	17,3	46,6	54,0	11,1	8,1
<i>60 i više</i>	6,6	2,2	17,7	26,7	74,4	79,7	24,4	21,1	10,3	4,5
<i>Nepo- znato</i>	1,1	1,1	0,9	0,6	1,5	1,3	0,9	0,8	14,4	15,4

Zaključeni i razvedeni brakovi prema starosti vjenčanih i razvedenih 2004.

Starost	Vjenčani		Razvedeni		Vjenčani %		Razvedeni %	
	žene	muškarci	žene	muškarci	žene	muškarci	žene	muškarci
Ukupno	3440	3440	505	505	100,0	100,0	100,0	100,0
<i>Ispod 20</i>	456	36	5	1	13,3	1,0	1,0	0,2
<i>20 - 24</i>	1202	653	64	16	34,9	19,0	12,7	3,2
<i>25 - 29</i>	971	1161	95	76	28,2	33,8	18,8	15,0
<i>30 - 34</i>	434	741	86	87	12,6	21,5	17,0	17,2
<i>35 - 39</i>	179	426	81	92	5,2	12,4	16,0	18,2
<i>40 - 44</i>	78	171	73	79	2,3	5,0	14,5	15,6
<i>45 - 49</i>	52	110	42	59	1,5	3,2	8,3	11,7
<i>50 - 54</i>	33	47	22	33	1,0	1,4	4,4	6,5
<i>55 - 59</i>	18	30	22	36	0,5	0,9	4,4	7,1
<i>60 - 64</i>	6	20	7	10	0,2	0,6	1,4	2,0
<i>65 +</i>	11	45	5	13	0,3	1,3	1,0	2,6
<i>Nepoznato</i>	-	-	3	3	-	-	0,6	0,6



Živorodeni prema polu 1991.-2004.

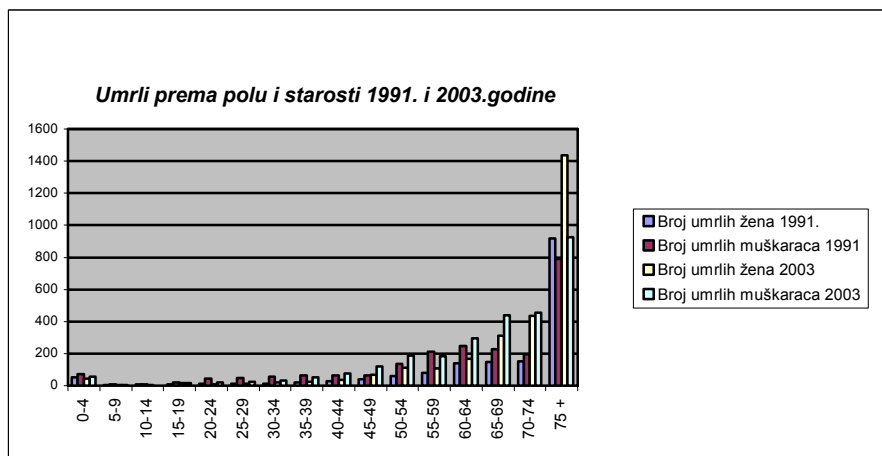
Godina	Ukupno	Djevojčice	Dječaci	Djevojčice %	Dječaci %	Broj djevojčica na 100 dječaka	Broj dječaka na 100 djevojčica
1991	9606	4689	4917	48.8	51.2	95	105
1992	9524	4466	5058	46.9	53.1	88	113
1993	8922	4217	4705	47.3	52.7	90	112
1994	8887	4325	4562	48.7	51.3	95	105
1995	9492	4549	4943	47.9	52.1	92	109
1996	9094	4394	4700	48.3	51.7	93	107
1997	8758	4183	4575	47.8	52.2	91	109
1998	9211	4476	4735	48.6	51.4	95	106
1999	8828	4270	4558	48.4	51.6	94	107
2000	9184	4416	4768	48.1	51.9	93	108
2001	8839	4196	4643	47.5	52.5	90	111
2002	8499	4037	4462	47.5	52.5	90	111
2003	8344	3995	4349	47.9	52.1	92	109
2004	7849	3819	4030	48,7	51,3	95	106

Živorodeni prema starosti majke 1991. i 2003.

Starost majke	1991		2003		Živorodeni%	
	broj živorodjenih	broj žena	broj živorodjenih	broj žena	1991	2003
Ukupno	9606	309104	8344	314920	100.0	100.0
<i>Ispod 15g.</i>	-	25351	-	21821	-	-
15-19	713	24885	429	23999	7.4	5.1
20-24	2965	23278	2492	24171	30.9	29.9
25-29	3178	23332	2615	22632	33.1	31.4
30-34	1843	23171	1756	20963	19.2	21.0
35-39	724	21780	765	20908	7.5	9.2
40-44	137	19821	182	22111	1.4	2.2
45-49	8	14409	4	22002	0.1	0.0
50+	3	18615	1	20523	0.0	0.0
<i>Nepoznato</i>	35	3198	100	3137	0.4	1.2

Umrli prema polu i starosti 1991. i 2003.

Starost	1991				2003				Broj umrlih žena na 100 umrlih muškaraca	
	broj umrlih žena	broj žena	broj umrlih muškaraca	broj muškaraca	broj umrlih žena	broj žena	broj umrlih muškaraca	broj muškaraca	1991	2003
Ukupno	1690	309104	2280	305931	2809	314920	2895	305225	74	97
0-4	53	24558	73	26150	45	19111	56	20560	73	80
5-9	4	25616	8	26797	4	20626	3	21950	50	133
10-14	6	25351	7	26986	2	21821	1	23393	86	200
15-19	6	24885	19	25897	15	23999	15	25388	32	100
20-24	10	23278	43	25591	6	24171	18	24792	23	33
25-29	11	23332	48	25263	10	22632	23	22356	23	43
30-34	11	23171	56	24639	19	20963	33	20565	20	58
35-39	19	21780	65	23123	22	20908	52	20797	29	42
40-44	27	19821	64	19354	34	22111	75	22064	42	45
45-49	38	14409	62	13333	66	22002	120	22494	61	55
50-54	59	18615	135	17060	110	20523	189	19913	44	58
55-59	79	16111	211	15107	106	14900	183	13171	37	58
60-64	140	14855	248	13130	169	15840	297	13393	56	57
65-69	148	11009	226	8186	313	15442	439	13208	65	71
70-74	150	6431	196	4177	435	11889	454	9351	77	96
75 +	916	12684	792	8116	1437	14845	927	9425	116	155
Nepoznato	13	3198	27	3022	16	3137	10	2405	48	160



Umrli prema polu i vodećim uzrocima smrti 1991. i 2003.

Uzrok smrti	1991				2003			
	žene	muškarci	žene %	muškarci %	žene	muškarci	žene %	muškarci %
Ukupno	1690	2280	100.0	100.0	2809	2895	100.0	100.0
I00-I99	750	835	44.3	36.8	1519	1354	54.0	46.8
C00-D48	231	357	13.7	15.6	374	593	13.3	20.5
R00-R99	438	551	25.9	24.2	458	379	16.3	13.1
S00-T98	56	254	3.3	11.1	72	161	2.6	5.6
J00-J98	36	62	2.1	2.7	132	142	4.7	4.9
K00-K93	35	68	2.1	3.0	60	78	2.1	2.7
E00-E88	39	24	2.3	1.1	75	56	2.7	1.9
N00-N98	17	26	1.0	1.1	39	46	1.4	1.6
G00-H95	20	20	1.2	0.9	10	13	0.4	0.4
A00-B99	8	12	0.5	0.4	4	14	0.1	0.5
P00-P96	14	28	0.8	1.2	30	31	1.1	1.1
F00-F99	29	20	1.7	0.9	19	12	0.7	0.4
Q00-Q99	12	19	0.7	0.8	9	9	0.3	0.3
M00-M99	1	-	0.1	-	-	3	-	0.1
D50-D89	1	4	0.1	0.2	6	3	0.2	0.1
L00-L98	-	-	-	-	2	1	0.1	-
O00-O99	3	-	0.2	-	-	-	-	-

I00-I99	<i>Bolesti krvotoka</i>
C00-D48	<i>Tumori</i>
R00-R99	<i>Simptomi, znaci i patološki klinički i laboratorijski nalazi</i>
S00-T98	<i>Povrede, trovanja i posljedice djelovanja spoljnih faktora</i>
J00-J98	<i>Bolesti organa za disanje</i>
K00-K93	<i>Bolesti organa za varenje</i>
E00-E88	<i>Bolesti žlijezda sa unutrašnjim lučenjem, ishrane i metabolizma</i>
N00-N98	<i>Bolesti polno-mokračnog sistema</i>
G00-H95	<i>Bolesti nervnog sistema i čula</i>
A00-B99	<i>Zarazne parazitarne bolesti</i>
P00-P96	<i>Stanja nastala u perinatalnom periodu</i>
F00-F99	<i>Duševni poremećaji i poremećaji ponašanja</i>
Q00-Q99	<i>Urođene anomalije, deformacije i hromozomne nenormalnosti</i>
M00-M99	<i>Bolesti mišićno-koštanog sistema i vezivnog tkiva</i>
D50-D89	<i>Bolesti krvi i krvotvornih organa i poremećaji imunog sistema</i>
L00-L98	<i>Bolesti kože i potkožnog tkiva</i>
O00-O99	<i>Trudnoća, rađanje i babinje</i>

Specifične stope fertiliteta žena starih 15 - 19 godina 1991. – 2003.

Specifične stope fertiliteta	1991	1992	1993	1994	1995	1996	1997	1998	1999	2000	2001	2002	2003
		28.5	25.4	24.3	21.8	23.6	22.8	19.9	20.9	18	21.1	19.2	17.9

Umrli odojčad prema polu i starosti 1991. i 2004.

Starost	1991.					2004.				
	djevojčice	dječaci	djevojčice %	dječaci %	broj djevojčica na 100 dječaka	djevojčice	dječaci	djevojčice %	dječaci %	broj djevojčica na 100 dječaka
Ukupno	45	62	100.0	100.0	73	28	33	100,0	100,0	85
0-6 dana	21	35	46.7	56.5	60	15	20	53,6	60,6	75
7-27 dana	7	12	15.6	19.4	58	7	6	25,0	18,2	117
28 dana do 2mjeseca	5	2	11.1	3.2	250	3	3	10,7	9,1	100
3–11 mjeseci	12	13	26.7	21.0	92	3	4	10,7	12,1	75

Umrila odojčad prema polu i uzroku smrti 1991. i 2004.

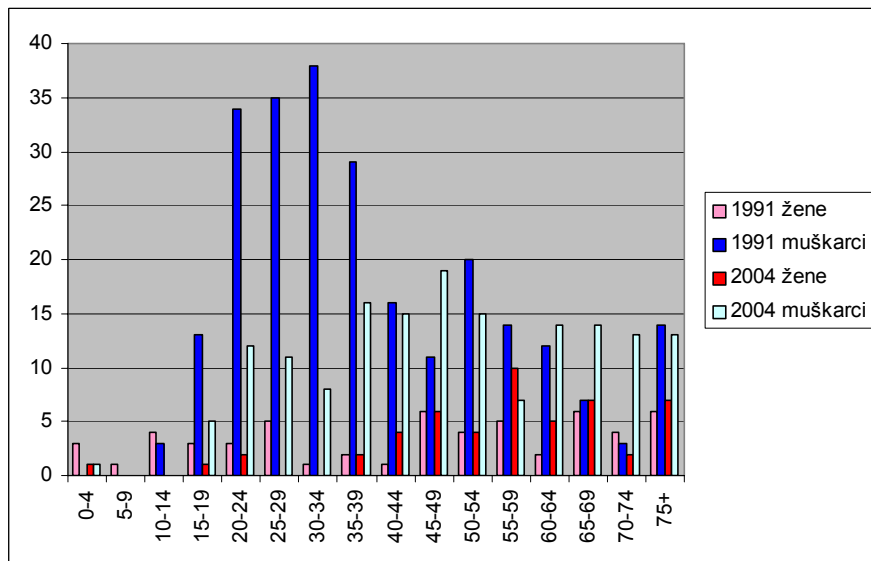
Uzrok smrti	1991				2004			
	Djevojčice	Dječaci	Djevojčice%	Dječaci %	Djevojčice	Dječaci	Djevojčice%	Dječaci %
<i>Ukupno</i>	45	62	100,0	100,0	28	33	100,0	100,0
<i>A00-B99</i>	1	2	2,2	3,2	-	-	-	-
<i>C00-D48</i>	-	-	-	-	-	-	-	-
<i>D50-D89</i>	-	-	-	-	-	-	-	-
<i>E00-E88</i>	-	-	-	-	-	-	-	-
<i>G00-H93</i>	2	-	4,4	-	-	1	-	3,0
<i>I00-I99</i>	1	-	2,2	-	2	2	7,1	6,1
<i>J00-J98</i>	1	2	2,2	3,2	-	-	-	-
<i>K00-K93</i>	-	2	-	3,2	-	-	-	-
<i>N00-N98</i>	-	-	-	-	-	-	-	-
<i>P00-P96</i>	14	28	31,1	45,2	20	24	71,4	72,7
<i>Q00-Q99</i>	11	13	24,4	21,0	1	1	3,6	3,0
<i>R00-R99</i>	13	15	28,9	24,2	5	5	17,9	15,2
<i>F01-F99, H00-H59, L00-L98, M00-M99</i>	-	-	-	-	-	-	-	-
<i>V01-Y89</i>	2	-	4,4	-	-	-	-	-

<i>A00-B99</i>	<i>Zarazne parazitarne bolesti</i>
<i>C00-D48</i>	<i>Tumori</i>
<i>D50-D89</i>	<i>Bolesti krvi i krvotvornih organa i poremećaji imunog sistema</i>
<i>E00-E88</i>	<i>Bolesti žlijezda sa unutrašnjim lučenjem, ishrane i metabolizma</i>
<i>G00-H93</i>	<i>Bolesti nervnog sistema i čula</i>
<i>I00-I99</i>	<i>Bolesti krvotoka</i>
<i>J00-J98</i>	<i>Bolesti organa za disanje</i>
<i>K00-K93</i>	<i>Bolesti organa za varenje</i>
<i>N00-N98</i>	<i>Bolesti polno-mokraćnog sistema</i>
<i>P00-P96</i>	<i>Neka stanja nastala u perinatalnom periodu</i>
<i>Q00-Q99</i>	<i>Urođene anomalije, deformacije i hromozomne nenormalnosti</i>
<i>R00-R99</i>	<i>Simptomi, znaci i patološki klinički i laboratorijski nalazi, neklasifikovani na drugom mjestu</i>
<i>F01-F99, H00-H59, L00-L98, M00-M99</i>	<i>Sve druge bolesti</i>
<i>V01-Y89</i>	<i>Spoljni uzroci smrti</i>

Nasilne smrti prema polu i starosti 1991. i 2004.

Starost	1991				2004			
	žene	muškarci	žene %	muškarci %	žene	muškarci	žene %	muškarci %
Ukupno	56	254	100,0	100,0	51	163	100,0	100,0
0-4	3	-	5,4	-	1	1	2,0	0,6
5-9	1	-	1,8	-	-	-	-	-
10-14	4	3	7,1	1,2	-	-	-	-
15-19	3	13	5,4	5,1	1	5	2,0	,1
20-24	3	34	5,4	13,4	2	12	3,9	7,4
25-29	5	35	8,9	13,8	-	11	-	6,7
30-34	1	38	1,8	15,0	-	8	-	4,9
35-39	2	29	3,6	11,4	2	16	3,9	9,8
40-44	1	16	1,8	6,3	4	15	7,8	9,2
45-49	6	11	10,7	4,3	6	19	11,8	11,7
50-54	4	20	7,1	7,9	4	15	7,8	9,2
55-59	5	14	8,9	5,5	10	7	19,6	4,3
60-64	2	12	3,6	4,7	5	14	9,8	8,6
65-69	6	7	10,7	2,8	7	14	13,7	8,6
70-74	4	3	7,1	1,2	2	13	3,9	8,0
75+	6	14	10,7	5,5	7	13	13,7	8,0
Nepoznato	-	5	-	2,0	-	-	-	-

Nasilne smrti prema polu i starosti 1991. i 2004.



Stope maternalne smrtnosti 1991. – 2004.

	1991	1992	1993	1994	1995	1996	1997	1998	1999	2000	2001	2002	2003	2004
Stopa	3,1	1,0	1,1	4,5	-	-	1,1	3,3	-	-	2,3	-	-	-

OBRAZOVANJE

Pod pojmom škole podrazumijeva se obrazovno - vaspitna ustanova ili jedinica koja obavlja obrazovno - vaspitnu djelatnost ostvarivanjem nastavnog plana i programa.

Učenici prvog razreda redovnih osnovnih škola su djeca stara 7 godina i upisana u prvi razred osnovne škole, dok se manji broj djece upisuje i sa 6 godina starosti.

Učenici prvog razreda redovnih srednjih škola su djeca stara 15 godina koja upisuju gimnaziju, srednje stručne ili umjetničke škole u trajanju od tri ili četiri godine.

U trogodišnjim školama stiže se treći, a u četvorogodišnjim četvrti stepen stručne spreme.

Status studenta stiže se upisom u visokoškolsku ustanovu. Lica koja imaju odgovarajuće srednje obrazovanje imaju pravo upisa na prvu godinu studija.

Nastavno osoblje osnovnih i srednjih škola predstavlja stručni nastavnički kadar koji, primjenjujući nastavni plan i program u obrazovno - vaspitnim ustanovama, učestvuje u pripremi, organizaciji i izvođenju nastave.

Nastavno osoblje viših škola i fakulteta obuhvata: redovne profesore, vanredne profesore, docente, predavače i više predavače više i visoke škole, profesore više škole, bilo da rade puno radno vrijeme ili kraće od punog radnog vremena.

Diplomirani student je lice koje dobija diplomu o završenoj višoj školi, visokoj školi, fakultetu ili akademiji umjetnosti.

Magistar nauka je lice koje je odbranilo magistarsku tezu, koja je rezultat samostalnog naučnog rada studenta koji sistematizuje postojeća naučna znanja i daje doprinos novim naučnim saznanjima.

Doktor nauka je lice koje je već steklo naziv magistra nauka, a koje je odbranom doktorske disertacije steklo i naučno zvanje doktora nauka.

**Učenci upisani u prvi razred redovnog osnovnog obrazovanja
prema polu, 1999./2000. i 2004./2005. školske god.**

Godina	Broj upisanih		Broj upisanih djevojčica na 100 dječaka
	djevojčice	dječaci	
1999/2000	4223	4682	90
2004/2005	4218	4709	90

**Učenci upisani u prvi razred redovnog osnovnog obrazovanja
prema polu (u %), 1999./2000. i 2004./2005. školske god.**

Godina	Upisani učenici (%)	
	djevojčice	dječaci
1999/2000	47.4	52.6
2004/2005	47.2	52.8

**Učenci upisani u prvi razred redovnog srednjeg obrazovanja
prema polu, 1999./2000. i 2004./2005. školske god.**

Godina	Broj upisanih		Broj upisanih djevojčica na 100 dječaka
	djevojčice	dječaci	
1999/2000	4717	4826	98
2004/2005	4393	4736	93

**Učenci upisani u prvi razred redovnog srednjeg obrazovanja
prema polu (u %), 1999./2000. i 2004./2005. školske god.**

Godina	Upisani učenici (%)	
	djevojčice	dječaci
1999/2000	49.4	50.6
2004/2005	48.1	51.9

**Studenti upisani na prvu godinu na Univerzitetu CG
prema polu, 1999./2000. i 2004./2005. školske god.**

Godina	Broj upisanih		Broj upisanih žena na 100 muškaraca
	žene	muškarci	
1999/2000	1751	1731	101
2004/2005	2542	2022	126

**Studenti upisani na prvu godinu na Univerzitetu CG prema polu (u %),
1999./2000. i 2004./2005. školske god.**

Godina	Upisani studenti (%)	
	žene	muškarci
1999/2000	50.3	49.7
2004/2005	55.7	44.3

Diplomirani studenti na Univerzitetu CG prema polu, 1999. i 2004.god.

Škole, fakulteti i akademije	1999		2004		Broj žena na 100 muškaraca	
	žene	muškarci	žene	muškarci	1999	2004
Više škole ¹⁾	146	143	273	201	102	136
Visoke škole	-	-	9	25	-	36
Fakulteti	358	255	555	352	140	158
Fakulteti umjetnosti i akademije	36	15	27	14	240	193

¹⁾ Diplomirali po dosadašnjem programu dvogodišnjih studija.

Magistarska i doktorska zvanja stečena na Univerzitetu CG prema polu, 1999. i 2004.

Zvanje	1999		2004		Broj žena na 100 muškaraca	
	žene	muškarci	žene	muškarci	1999	2004
Magistar nauka	6	4	17	15	150	113
Doktor nauka	2	8	3	7	25	43

Magistarska i doktorska zvanja stečena na Univerzitetu CG prema polu (u %), 1999. i 2004.

Zvanje	1999		2004	
	žene	muškarci	žene	muškarci
Magistar nauka	60.0	40.0	53.1	46.9
Doktor nauka	20.0	80.0	30.0	70.0

Nastavno osoblje u osnovnim, srednjim, višim školama, fakultetima i akademijama prema polu, 1999./2000. i 2004./2005. školske god.

Škole, fakulteti i akademije	1999/2000		2004/2005		Broj žena na 100 muškaraca	
	žene	muškarci	žene	muškarci	1999	2004
Osnovne škole	3179	1771	3295	1501	179	219
Srednje škole	1187	1007	1300	945	118	138
Više škole ¹⁾	12	21	8	23	57	35
Fakulteti	203	407	288	414	50	70
Fakulteti umjetnosti i akademije	28	48	36	50	58	72

¹⁾ Od školske 2003/2004. viša škola je nastavila sa radom kao visoka škola.

Nastavno osoblje u osnovnim, srednjim, višim školama, fakultetima i akademijama prema polu (u %), 1999./2000. i 2004./2005. školske god.

Škole, fakulteti i akademije	1999/2000		2004/2005	
	žene	muškarci	žene	muškarci
Osnovne škole	64.2	35.8	68.7	31.3
Srednje škole	54.1	45.9	57.9	42.1
Više škole ¹⁾	36.4	63.6	25.8	74.2
Fakulteti	33.3	66.7	41.0	59.0
Fakulteti umjetnosti i akademije	36.8	63.2	41.9	58.1

¹⁾ Od školske 2003/2004. viša škola je nastavila sa radom kao visoka škola.

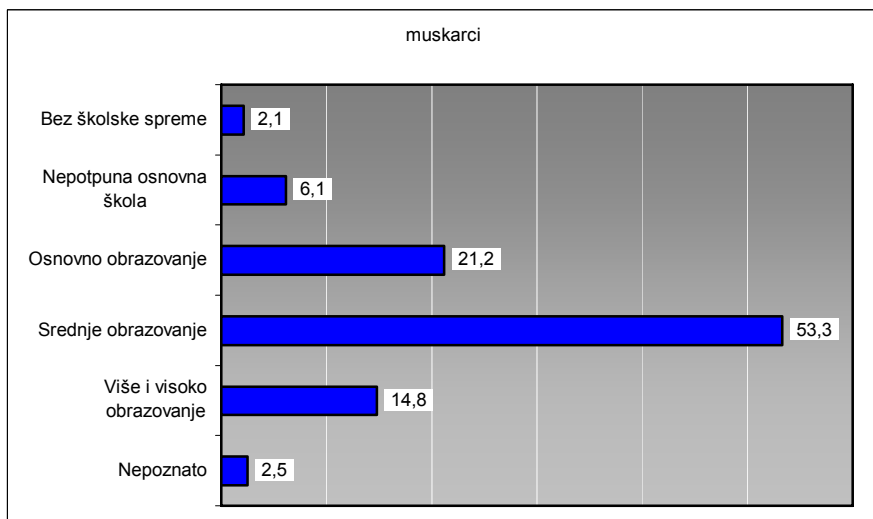
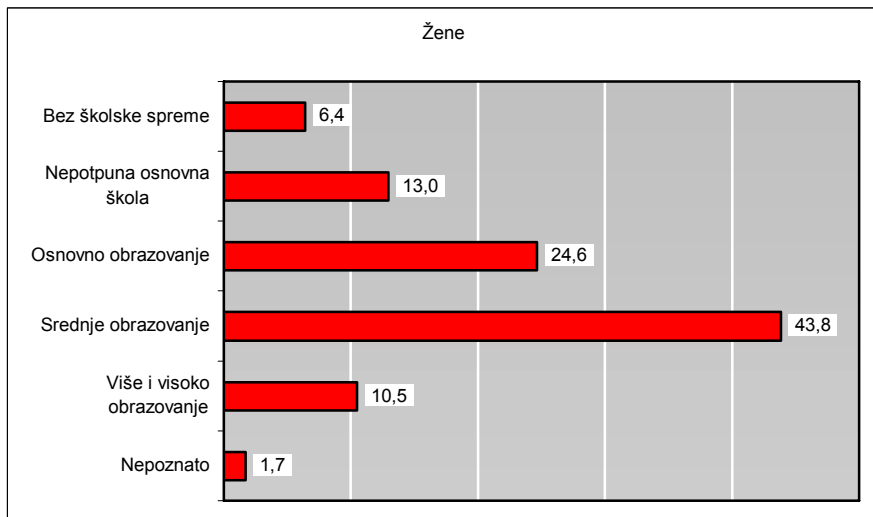
Stanovništvo staro 15 i više godina prema polu i školskoj spremi, 1991. i 2003.

Školska sprema	1991		2003		Broj žena na 100 muškaraca	
	žene	muškarci	žene	muškarci	1991	2003
Ukupno	233579	225998	253362	239322	103	106
<i>Bez školske spreme</i>	31486	9238	16186	5024	341	322
<i>Nepotpuna osnovna škola</i>	47738	27324	32834	14652	175	224
<i>Osnovno obrazovanje</i>	68336	67209	62414	50671	102	123
<i>Srednje obrazovanje</i>	68023	92712	111050	127621	73	87
<i>Više i visoko obrazovanje</i>	14928	25785	26498	35341	58	75
<i>Nepoznato</i>	3068	3730	4380	6013	82	73

Stanovništvo staro 15 i više godina prema polu i školskoj spremi (u %), 1991. i 2003.

Školska sprema	1991		2003	
	žene	muškarci	žene	muškarci
Ukupno	100,0	100,0	100,0	100,0
<i>Bez školske spreme</i>	13,4	4,1	6,4	2,1
<i>Nepotpuna osnovna škola</i>	20,4	12,1	13,0	6,1
<i>Osnovno obrazovanje</i>	29,3	29,7	24,6	21,2
<i>Srednje obrazovanje</i>	29,2	41,0	43,8	53,3
<i>Više i visoko obrazovanje</i>	6,4	11,4	10,5	14,8
<i>Nepoznato</i>	1,3	1,7	1,7	2,5

Stanovništvo staro 15 i više godina prema polu i školskoj spremi (u %), 2003.



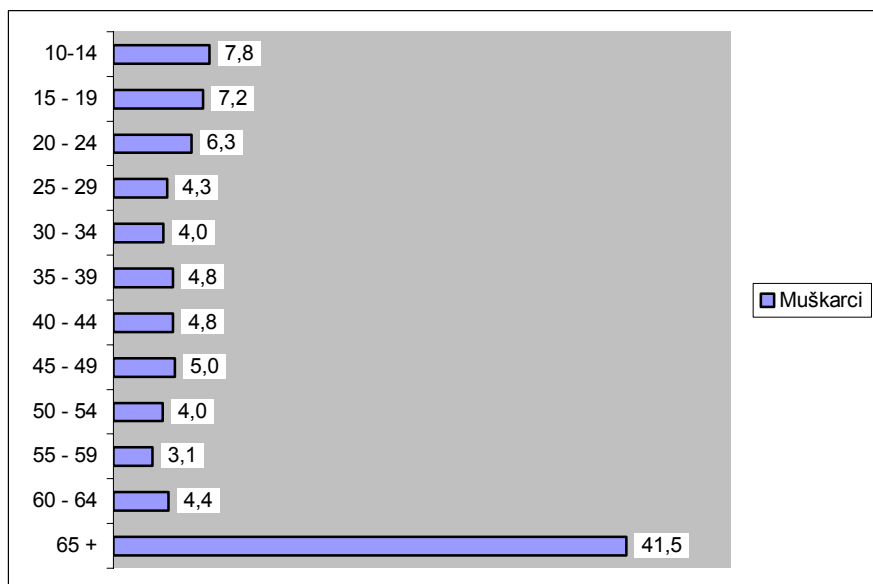
**Nepismeno stanovništvo staro 10 i više godina za 2003., a 15 i više godina za 1991.
prema polu i prema starosti**

Starost	1991		2003		Broj žena na 100 muškaraca	
	žene	muškarci	žene	muškarci	1991	2003
Nepismeni	25020	5018	10611	2006	499	529
10 – 14	-	-	168	156	-	108
15 – 19	219	181	156	145	121	108
20 – 24	270	187	152	127	144	120
25 – 29	240	172	127	87	140	146
30 – 34	334	153	126	81	218	156
35 – 39	341	130	162	97	262	167
40 – 44	467	144	177	97	324	182
45 – 49	599	136	233	100	440	233
50 – 54	1428	213	247	80	670	309
55 – 59	2877	376	313	63	765	497
60 – 64	3974	566	571	89	702	642
65+	13979	2699	7882	832	518	947
Nepoznato	292	61	297	52	479	571

**Nepismeno stanovništvo staro 10 i više godina za 2003. a 15 i više
godina za 1991. prema polu i starosti(u %)**

Starost	1991		2003	
	žene	muškarci	žene	muškarci
Ukupno	100.0	100.0	100.0	100.0
10 – 14	-	-	1.6	7.8
15 – 19	0.9	3.6	1.5	7.2
20 – 24	1.1	3.7	1.4	6.3
25 – 29	1.0	3.4	1.2	4.3
30 – 34	1.3	3.0	1.2	4.0
35 – 39	1.4	2.6	1.5	4.8
40 – 44	1.9	2.9	1.7	4.8
45 – 49	2.4	2.7	2.2	5.0
50 – 54	5.7	4.2	2.3	4.0
55 – 59	11.5	7.5	3.0	3.1
60 – 64	15.9	11.3	5.4	4.4
65+	55.9	53.8	74.3	41.5
Nepoznato	1.2	1.2	2.8	2.6

Nepismeno stanovništvo staro 10 i više godina za 2003.prema polu i starosti (u%)



SOCIJALNA ZAŠTITA

Djeca u predškolskim ustanovama, koja su dnevno zbrinuta, imaju obezbijeđenu njegu, ishranu i vaspitanje do sedam godina starosti odnosno do polaska u školu.

Učenici u domovima učenika osnovnih i srednjih škola školuju se van mjesta boravka roditelja/izdržavaoca i imaju obezbijeđen smještaj, ishranu i vaspitanje.

Studentski domovi obezbjeđuju smještaj i ishranu studentima visokih škola, fakulteta i umjetničkih akademija za vrijeme studija.

Korisnikom socijalne zaštite smatra se svako lice koje je u toku izvještajne godine, jednom ili više puta koristilo određene oblike i mjere socijalne zaštite i usluge socijalne službe.

**Djeca korisnici predškolskih ustanova i zaposleni u predškolskim ustanovama
prema polu, 1999. i 2004.god.**

<i>Godina</i>	<i>Broj djece korisnika</i>		<i>Broj djevojčica na 100 dječaka</i>	<i>Broj zaposlenih</i>	
	<i>djevojčice</i>	<i>dječaci</i>		<i>žene</i>	<i>muškarci</i>
1999	5396	6163	88	1070	24
2004	5656	6105	93	1121	86

**Djeca korisnici predškolskih ustanova i zaposleni u predškolskim ustanovama
prema polu (u %), 1999. i 2004.god.**

<i>Godina</i>	<i>Djeca korisnici (%)</i>		<i>Zaposleni (%)</i>	
	<i>djevojčice</i>	<i>dječaci</i>	<i>žene</i>	<i>muškarci</i>
1999	46.7	53.3	97.8	2.2
2004	48.1	51.9	92.9	7.1

**Učenici, studenti i zaposleni u domovima učenika i studentskim domovima
prema polu, 1999. i 2004.god.**

<i>Godina</i>	<i>Broj učenika i studenata</i>		<i>Broj djevojčica na 100 dječaka</i>	<i>Broj zaposlenih</i>		<i>Broj žena na 100 muškaraca</i>
	<i>djevojčice</i>	<i>dječaci</i>		<i>žene</i>	<i>muškarci</i>	
1999	1162	1049	111	96	151	64
2004	1610	918	175	161	100	161

**Učenci, studenti i zaposleni u domovima učenika i studentskim domovima
prema polu (u %), 1999. i 2004.god.**

Godina	Učenci i studenti (%)		Zaposleni (%)	
	djevojčice	dječaci	žene	muškarci
1999	52.6	47.4	38.9	61.1
2004	63.7	36.3	61.7	38.3

**Maloljetni i punoljetni korisnici socijalne zaštite
prema polu, 1999. i 2004.god.**

Godina	Broj maloljetnih korisnika		Broj djevojčica na 100 dječaka	Broj punoljetnih korisnika		Broj žena na 100 muškaraca
	djevojčice	dječaci		žene	muškarci	
1999	5116	6540	78	8569	10208	84
2004	7876	9573	82	13407	15681	85

**Maloljetni i punoljetni korisnici socijalne zaštite
prema polu (u %), 1999. i 2004. god.**

Godina	Maloljetni korisnici (%)		Punoljetni korisnici (%)	
	djevojčice	dječaci	žene	muškarci
1999	43.9	56.1	45.6	54.4
2004	45.1	54.9	46.1	53.9

KRIMINALITET

Osuđena lica jesu lica koja su proglašena krivima i kojima su sudovi opšte nadležnosti konstatovali pravosnažnost presude u odgovarajućoj godini.

Pravosnažno osuđeno maloljetno lice jeste osoba koja ima od 14 do 18 godina starosti i koja je zbog učinjenog djela pravosnažno osuđena na osnovu krivičnog zakona od strane suda opšte nadležnosti.

Pravosnažno osuđeno punoljetno lice jeste osoba koja ima preko 18 godina starosti i koja je zbog učinjenog djela pravosnažno osuđena na osnovu krivičnog zakona od strane suda opšte nadležnosti.

Osuđena maloljetna lica prema krivičnim djelima, po polu, 1999. i 2004.god.

Vrsta krivičnog djela	1999			2004		
	tjevoj- čice	dje- čaci	broj djevoj- čica na 100 dječaka	tjevoj- čice	dje- čaci	broj djevoj- čica na 100 dječaka
UKUPNO	10	157	6	3	88	3
Krivična djela protiv:						
Života i tijela	2	15	13	-	11	-
Privrede	-	8	-	-	9	-
Imovine	8	120	7	-	52	-
Bezbjednosti javnog saobrać.	-	8	-	1	5	20
Javnog reda i pravnog saobrać.	-	2	-	1	5	20
Ostala krivična djela	-	4	-	1	6	17

Osuđena punoljetna lica prema krivičnim djelima, po polu, 1999. i 2004.god.

Vrsta krivičnog djela	1999			2004		
	žene	muš- karci	broj žena na 100 muškaraca	žene	muš- karci	broj žena na 100 muškaraca
UKUPNO	137	2118	6	138	1865	7
Krivična djela protiv:						
Ustav. uređ. i bezbj.SCG	-	-	-	-	-	-
Života i tijela	13	276	5	9	196	5
Sloboda i prava čovjeka i građ.	-	21	-	-	34	-
Radnih odnosa	-	2	-	-	-	-
Časti i ugleda	9	25	36	5	12	42
Dostojanstva ličnosti i morala	-	9	-	-	10	-
Braka i porodice	-	14	-	-	74	-
Zdravlja ljudi	-	3	-	3	63	5
Privrede	24	522	5	12	292	4
Imovine	19	400	5	27	394	7
Opšte sigur. ljudi i imovine	4	34	12	3	14	21
Bezbjednosti javnog saobrać.	25	535	5	24	309	8
Pravosuđa	1	10	10	-	19	-
Javnog reda i pravnog saobrać.	19	182	10	53	419	13
Službene dužnosti	11	29	38	2	27	7
Ostala krivična djela	12	56	21	-	2	-

Osuđena maloljetna lica po uzrastu i polu, 1999. i 2004.god.

Starost	1999			2004		
	djevojčice	dječaci	broj djevojčica na 100 dječaka	djevojčice	dječaci	broj djevojčica na 100 dječaka
UKUPNO	10	157	6	3	88	3
14 godina	1	15	7	-	6	-
15	5	41	12	1	11	9
16	-	38	-	-	27	-
17 godina	4	63	6	2	44	4

Osuđena punoljetna lica po uzrastu i polu, 1999. i 2004.god.

Starost	1999			2004		
	žene	muškarci	broj žena na 100 muškaraca	žene	muškarci	broj žena na 100 muškaraca
UKUPNO	137	2118	6	138	1865	7
18 – 20	4	226	2	8	175	5
21 – 24	12	337	4	14	311	4
25 – 29	29	332	9	21	293	7
30 – 39	38	610	6	39	434	9
40 – 49	29	382	8	27	325	8
50 – 59	12	131	9	15	179	8
60 i više godina	13	100	13	10	92	11
Nepoznato	-	-	-	4	56	7

ZAPOSLENOST I ZARADE

Aktivno stanovništvo čine lica stara 15 i više godina koja obavljaju zanimanje, kao i nezaposlena lica koja traže posao i lica koja su privremeno prekinula obavljanje zanimanja zbog služenja vojnog roka (aktivna lica koja ne obavljaju zanimanje).

Aktivno stanovništvo koje obavlja zanimanje čine lica stara 15 i više godina koja obavljaju određenu vrstu poslova u cilju sticanja sredstava za život.

Djelatnost se odnosi na ekonomsku aktivnost preduzeća, radnje, ustanove, zadruge, itd., u kojoj lice radi.

Podaci o prosječnim zaradama prikazuju prosječne zarade isplaćene u godini. Pod pojmom prosječna zarada zaposlenog lica podrazumijeva se : Zarada zaposlenog ostvarena za obavljeni rad i vrijeme provedeno na radu, uvećane zarade, naknade zarada i druga primanja.

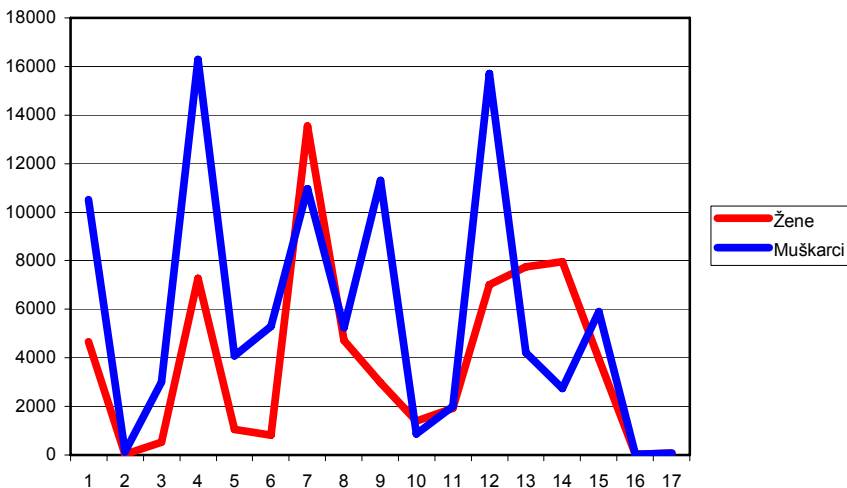
Stanovništvo prema aktivnosti i polu, 2003.

Naziv i tip naselja	Ukupno	Žensko	Aktivno stanovništvo				Lica s ličnim prihodom			Izdržavano stanovništvo
			svega	obavlja zanimanje	žensko		svega	žensko	svega	
					svega	obavlja zanimanje				svega
Crna Gora	620145	314920	264276	171325	112169	67900	102223	51310	251677	150764
Gradska	383808	197371	171775	114958	79235	50371	62288	33447	148599	84310
Ostala	236337	117549	92501	56367	32934	17529	39935	17863	103078	66454

Aktivno stanovništvo koje obavlja zanimanje, prema djelatnosti i polu, 2003.

Djelatnost	Ukupno	Žene	Muškarci	Struktura u %		Broj žena na 100 muškaraca
				Žene	Muškarci	
Ukupno	171325	67900	103425	100,00	100,00	66
1. Poljoprivreda, lov i šumarstvo	15185	4670	10515	6,88	10,17	44
2. Ribarstvo	150	27	123	0,04	0,12	22
3. Vađenje ruda i kamena	3546	531	3015	0,78	2,92	18
4. Prerađivačka industrija	23558	7272	16286	10,71	15,75	45
5. Proizvodnja el. energije, gasa i vode	5139	1054	4085	1,55	3,95	26
6. Građevinarstvo	6101	807	5294	1,19	5,12	15
7. Trgovina na veliko i malo	24514	13554	10960	19,96	10,60	124
8. Hoteli i restorani	9957	4714	5243	6,94	5,07	90
9. Saobraćaj, skladištenje i veze	14280	2987	11293	4,40	10,92	26
10. Finansijsko posredovanje	2278	1403	875	2,07	0,85	160
11. Poslovi s nekretninama, iznaj.	3903	1913	1990	2,82	1,92	96
12. Državna uprava, odbrana i socijalno osiguranje	22709	7009	15700	10,32	15,18	45
13. Obrazovanje	11947	7738	4209	11,40	4,07	184
14. Zdravstveni i socijalni rad	10689	7958	2731	11,72	2,64	291
15. Druge komunalne društvene i lične usluge	9861	3960	5901	5,83	5,71	67
16. Privatna dom. sa zaposlenim licima	53	34	19	0,05	0,02	179
17. Eksteritorijalne organiz. i tijela	148	79	69	0,12	0,07	114
Nepoznato	7307	2190	5117	3,23	4,95	43

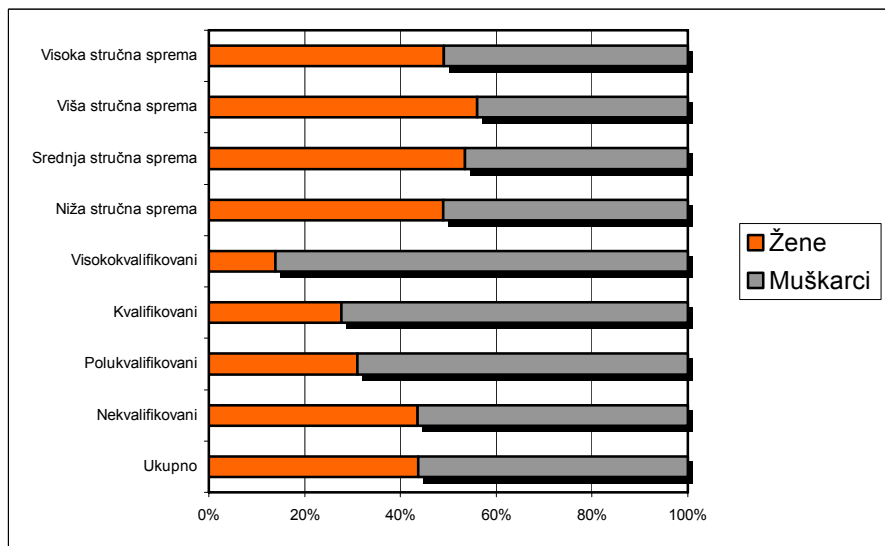
Aktivno stanovništvo koje obavlja zanimanje prema djelatnosti i polu, 2003.



Zaposleni prema polu i stepenu stručne spreme 2004.

Stručna sprema	Broj zaposlenih			Struktura %		Žena na 100 muškaraca
	ukupno	žene	muškarci	žene	muškarci	
Ukupno	143479	62700	80779	43,70	56,30	78
Nekvalifikovani	12739	5551	7187	43,57	56,42	77
Polukvalifikovani	7183	2230	4954	31,05	68,97	45
Kvalifikovani	25236	6980	18256	27,66	72,34	38
Visokokvalifikovani	8873	1231	7642	13,87	86,13	16
Niža stručna sprema	7071	3456	3615	48,88	51,12	96
Srednja stručna sprema	45882	24547	21335	53,50	46,50	115
Viša stručna sprema	11635	6517	5118	56,01	43,99	127
Visoka stručna sprema	24860	12189	12671	49,03	50,97	96

Zaposleni prema polu i stepenu stručne spreme (u %) 2004.



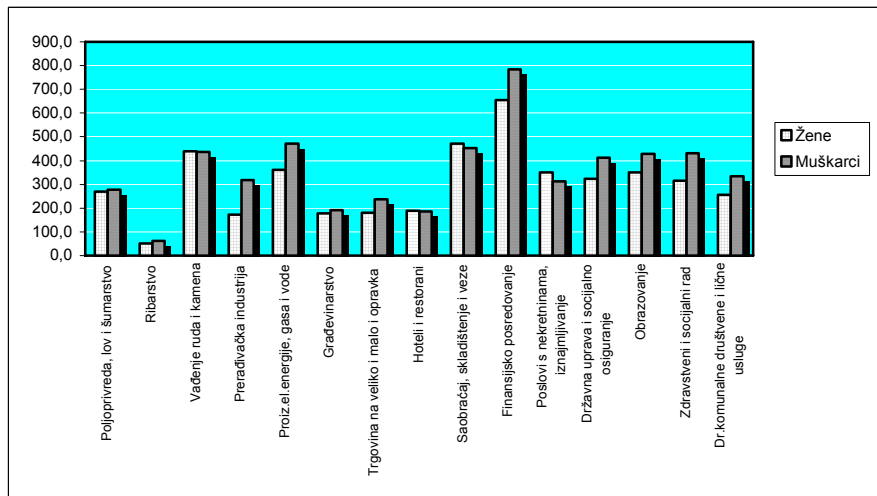
Prosječne zarade prema polu i sektorima djelatnosti 2004.

Stanje 31. mart – 30. septembar, 2004.

Sektor djelatnosti	Prosječne zarade			Odnos prosječnih zarada žena i muškaraca u odnosu na ukupne		Prosječne zarade žena u odnosu na prosječne zarade muškaraca
	ukupno	žene	muškarci	žene	muškarci	
Ukupno	326	290	354	88.8	108.7	81.7
Poljoprivreda, lov i šumarstvo	276	270	279	97.9	100.9	97.0
Ribarstvo	59	51	62	87.1	106.7	81.7
Vađenje ruda i kamena	436	438	436	100.5	99.9	100.6
Prerađivačka industrija	274	171	319	62.4	116.2	53.7
Proiz.el.energije, gasa i vode	450	360	473	80.0	105.0	76.2
Građevinarstvo	190	177	193	93.0	101.3	91.9
Trgovina na veliko i malo i opravka	207	181	238	87.6	114.9	76.2
Hoteli i restorani	187	188	185	100.8	99.1	101.7
Saobraćaj, skladištenje i veze	458	472	453	103.0	98.9	104.2
Finansijsko posredovanje	701	656	785	93.6	112.0	83.6
Poslovi s nekretninama, iznajmljiv.	329	351	314	106.4	95.2	111.8
Državna uprava i socijalno osig.	366	323	413	88.3	112.7	78.4
Obrazovanje	377	351	429	93.0	113.8	81.7
Zdravstveni i socijalni rad	346	315	430	91.1	124.3	73.3
Dr.komunalne društva i lične usluge	304	257	334	84.6	109.9	77.0

Prosječne zarade prema polu i sektorima djelatnosti 2004.godine

Stanje 31. mart – 30. septembar, 2004.



REPUBLIC OF MONTENEGRO
STATISTICAL OFFICE OF MONTENEGRO - MONSTAT



WOMEN AND MEN IN MONTENEGRO

PODGORICA, 2006
FIRST ISSUE

Publisher: Statistical Office of Montenegro
St. IV Proleterske 2, Podgorica
Phone + 381 81 241 – 206
Fax ; + 381-81-241 270
e – mail statistika@cq.yu
web: www.monstat.cg.yu

For publisher: Ilija Stanišić, Director

Editorial Board: Gojko Dragaš, Jovana Pješčić,
Zdenka Brajović

Associates: Dragica Popivoda, Biljana Sekulović,
Snežana Remiković

Design and pre – press: Radmila Šišević

Translation: Vladimir Radenović

Press:

Circulation: 600 copies

<p>No part of this publication may be reproduced or transmitted without indicating the original source</p>

PREFACE

Publication "Women and Men in Montenegro" provides brief view of the state of women and men in our society. It appeared as the response to increased needs of users to, among other issues monitor the situation in the society through statistical data shown according to gender.

This publication consists of tables and graphs without textual analysis and may serve as the source of information to all users of data interested for the position of women and men and gender equality in Montenegro.

Data presented in this publication refer to the following subjects:

- *Population*
- *Education*
- *Social welfare*
- *Crimes*
- *Employment and salaries*

We would like to specially thank to the Office for Gender Equality of the Government of the Republic of Montenegro for the assistance in creation of this publication.

Director, Ilija Stanišić

CONTENTS

	<u>Preface</u>	43
1.	<u>Population</u>	47
2.	<u>Education</u>	62
3.	<u>Social Welfare</u>	70
4.	<u>Crime</u>	73
5.	<u>Employment and wages</u>	76

POPULATION

Data on the number of inhabitants were collected in censuses conducted from 1948 to 2003. When using census results, it should be noted that there is no complete comparison of definitions of permanent, i.e., total population in Population Census 2003 with earlier censuses. In censuses 1971 – 1991, besides the population in the country, the citizens that lived or worked abroad were also included in the permanent population. In compliance with International recommendations, Population census 2003, except the population in the country, included citizens of Montenegro who worked or lived shorter than a year, as well as foreign citizens who either worked or lived in our country for more than a year.

The population by sex and age represents the number of persons of a particular sex, grouped according to age. The table shows the age-sex structure over absolute frequencies and/or percentage distribution.

Data on marital status are shown for the population aged 15 and above, and refer to the legal status of entities (legal marital status), and not to the factual state within family units.

Data on national or ethnic affiliation are obtained on the basis of free declaration of population or parents, foster parents or guardians in the case when children were under the age of 15.

The statistics of born children includes all children born in the observed year (both liveborn and stillborn children). A liveborn baby is the one who, at birth, showed the signs of life (breathing, normal heart function) even for a short period, no matter how much mother's pregnancy lasted. A stillborn baby is the one which showed no signs of life, under the condition that it was carried longer than 28 weeks.

The statistics of deaths (mortality) includes all cases of death. Coding and aggregation of data on the basic death unit is done according to the International Classification of Illnesses, X Revision (MKB - 10).

Deaths by main causes of deaths represent the number of death persons whose cause of death is the most frequent one.

The specific fertility rate for women aged between 15 and 19 represents the number of children whose mothers are of the mentioned age, per 1000 women aged 19-19 in the whole population.

The maternal mortality rate represents the number of women who died during pregnancy, at delivery, and in the first forty days after delivery, due to causes connected with these conditions, during the calendar year, per 10000 liveborn children.

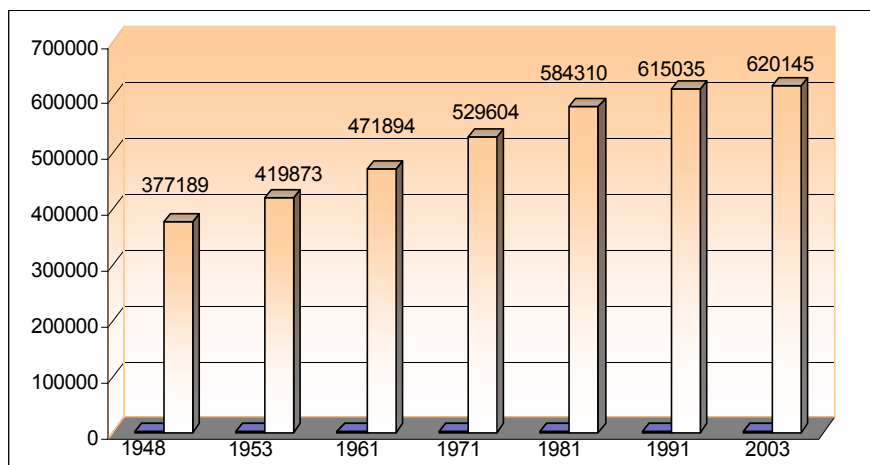
Total area and population density

Territory	Area km²	1991		2003	
		population	population density	population	population density
MONTENEGRO	13812	615035	44.5	620145	44.9

Population growth by censuses, 1948 – 2003

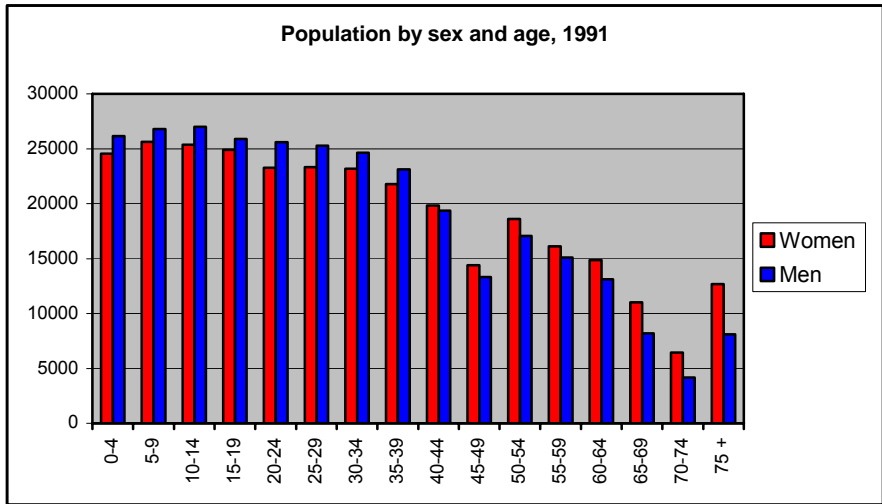
Year	Population	Chain index	Index increase (base year 1948)
1948	377189	-	100.0
1953	419873	111.3	111.3
1961	471894	112.4	125.1
1971	529604	112.2	140.4
1981	584310	110.3	154.9
1991	615035	105.3	163.1
2003	620145	100.8	164.4

Population growth by censuses



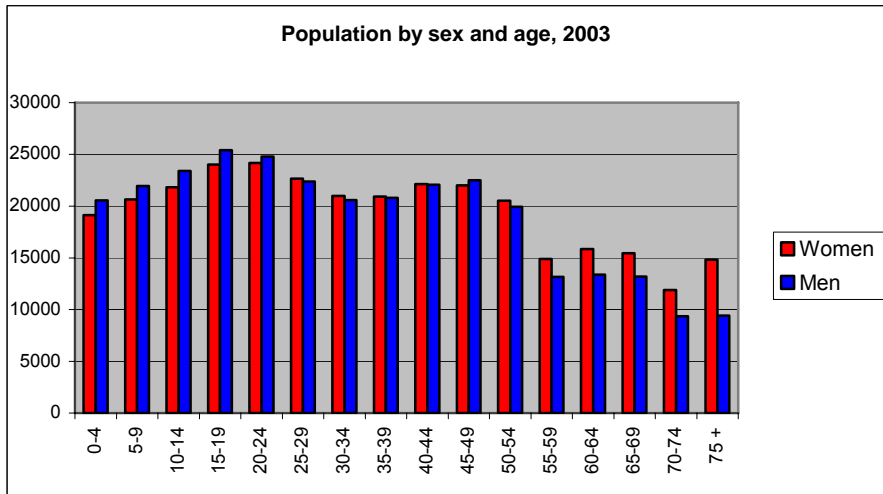
Population by sex and age, 1991

Age	Women	Men	Percentage distribution %		Women per 100 men
			Women	Men	
Total	309104	305931	100.0	100.0	101
0-4	24558	26150	7.9	8.5	94
5-9	25616	26797	8.3	8.8	96
10-14	25351	26986	8.2	8.8	94
15-19	24885	25897	8.1	8.5	96
20-24	23278	25591	7.5	8.4	91
25-29	23332	25263	7.5	8.3	92
30-34	23171	24639	7.5	8.1	94
35-39	21780	23123	7.0	7.6	94
40-44	19821	19354	6.4	6.3	102
45-49	14409	13333	4.7	4.4	108
50-54	18615	17060	6.0	5.6	109
55-59	16111	15107	5.2	4.9	107
60-64	14855	13130	4.8	4.3	113
65-69	11009	8186	3.6	2.7	134
70-74	6431	4177	2.1	1.4	154
75 +	12684	8116	4.1	2.7	156
Unknown	3198	3022	1.0	1.0	106



Population by sex and age, 2003

Age	Women	Men	Percentage distribution %		Women per 100 men
			Women	Men	
Total	314920	305225	100.0	100.0	103
0-4	19111	20560	6.1	6.7	93
5-9	20626	21950	6.5	7.2	94
10-14	21821	23393	6.9	7.7	93
15-19	23999	25388	7.6	8.3	95
20-24	24171	24792	7.7	8.1	97
25-29	22632	22356	7.2	7.3	101
30-34	20963	20565	6.7	6.7	102
35-39	20908	20797	6.6	6.8	101
40-44	22111	22064	7.0	7.2	100
45-49	22002	22494	7.0	7.4	98
50-54	20523	19913	6.5	6.5	103
55-59	14900	13171	4.7	4.3	113
60-64	15840	13393	5.0	4.4	118
65-69	15442	13208	4.9	4.3	117
70-74	11889	9351	3.8	3.1	127
75 +	14845	9425	4.7	3.1	158
Unknown	3137	2405	1.0	0.8	130



Population by sex and age groups, 2003

Age	Total	Women	Men	Percentage distribution %		Women per 100 men
				Women	Men	
Total	620145	314920	305225	100,0	100,0	103
0 - 19	176848	85557	91291	27,2	29,9	94
20 - 39	177184	88674	88510	28,2	29,0	100
40 - 59	157178	79536	77642	25,3	25,4	102
60 - 79	93393	51642	41751	16,4	13,7	124
80 +	10000	6374	3626	2,0	1,2	176
Unknown	5542	3137	2405	1,0	0,8	130

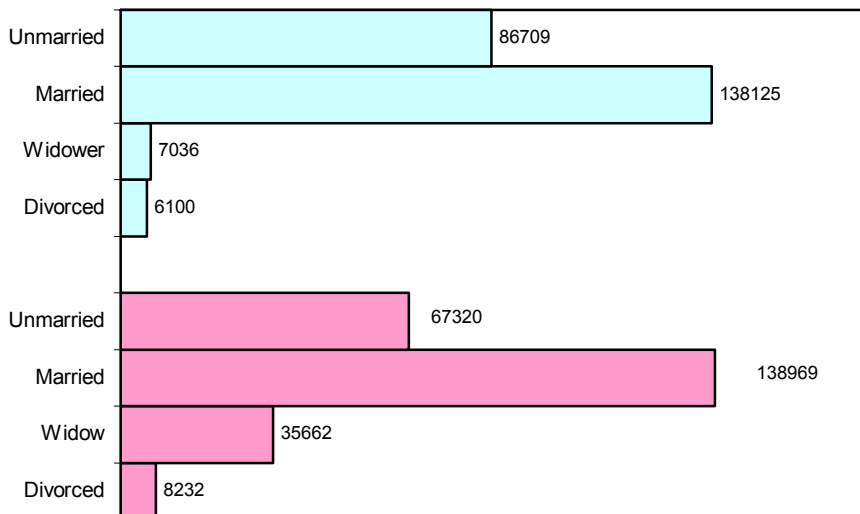
Population by sex and national or ethnic groups, 2003

National or ethnic groups	Total	Women	Men	Percentage distribution %		Women per 100 men
				Women	Men	
Total	620145	314920	305225	100,0	100,0	103
Montenegrins	267669	136968	130701	43,5	42,8	105
Serbs	198414	99734	98680	31,7	32,3	101
Yugoslavs	1860	848	1012	0,3	0,3	84
Albanians	31163	15355	15808	4,9	5,2	97
Bosniaks	48184	24138	24046	7,7	7,9	100
Egyptian	225	104	121	0,0	0,0	86
Italian	127	57	70	0,0	0,0	81
Macedonians	819	489	330	0,2	0,1	148
Hungarians	362	225	137	0,1	0,0	164
Muslims	24625	12492	12133	4,0	4,0	103
Germans	118	67	51	0,0	0,0	131
Roma	2601	1267	1334	0,4	0,4	95
Russians	240	160	80	0,1	0,0	200
Slovenians	415	261	154	0,1	0,1	169
Croats	6811	3957	2854	1,3	0,9	139
Other	2180	1039	1141	0,3	0,4	91
Non declared and undefined	26906	14037	12869	4,5	4,2	109
Regional affiliation	1258	682	576	0,2	0,2	118
Unknown	6168	3040	3128	1,0	1,0	97

Population aged 15 and more according to marital status, sex and age, 2003

Age	Marital status									
	Unmar- ried (w)	Unmar- ried (m)	Married (w)	Married (m)	Widow	Wido- wer	Divor- ced (w)	Divor- ced (m)	Unknown	
									Women	Men
Total	67320	86709	138969	138125	35662	7036	8232	4054	3179	3398
Under 20	21600	23661	1043	160	8	5	22	6	1326	1556
20 - 24	16782	22593	6826	1709	38	10	185	42	340	438
25 - 29	9168	14844	12718	7128	123	16	473	163	150	205
30 - 34	4708	8241	15178	11843	242	24	708	323	127	134
35 - 39	3020	5311	16383	14858	483	71	927	443	95	114
40 - 59	6798	9251	60856	64711	7694	1214	3835	2190	353	276
60 +	4476	1884	24658	36878	26541	5607	2012	856	329	152
Unknown	768	924	1307	838	533	89	70	31	459	523
Average age	28,7	27,5	45,6	50,4	67,7	69,5	49,2	49,5	30,3	25,9

Population aged 15 and more according to marital status and sex, 2003

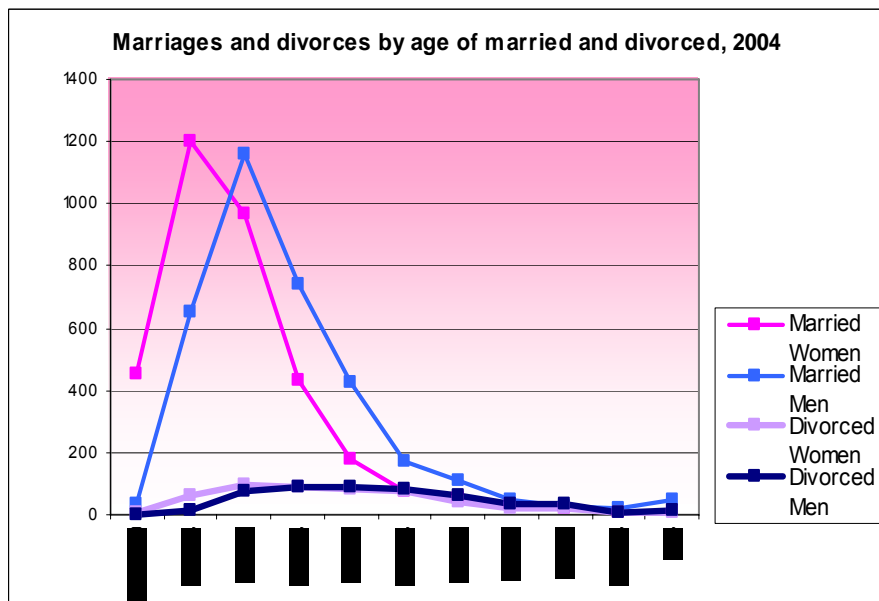


Population aged 15 and more according to marital status, sex and age (in%), 2003

Age	Marital status									
	Unmarried (w)	Unmarried (m)	Married (w)	Married (m)	Widow	Widower	Divorced (w)	Divorced (m)	Unknown	
									Women	Men
Total	100,0	100,0	100,0	100,0	100,0	100,0	100,0	100,0	100,0	100,0
<i>Below 20</i>	32,1	27,3	0,8	0,1	0,0	0,1	0,3	0,1	41,7	45,8
20 - 24	24,9	26,1	4,9	1,2	0,1	0,1	2,2	1,0	10,7	12,9
25 - 29	13,6	17,1	9,2	5,2	0,3	0,2	5,7	4,0	4,7	6,0
30 - 34	7,0	9,5	10,9	8,6	0,7	0,3	8,6	8,0	4,0	3,9
35 - 39	4,5	6,1	11,8	10,8	1,4	1,0	11,3	10,9	3,0	3,4
40 - 59	10,1	10,7	43,8	46,8	21,6	17,3	46,6	54,0	11,1	8,1
60 +	6,6	2,2	17,7	26,7	74,4	79,7	24,4	21,1	10,3	4,5
<i>Unknown</i>	1,1	1,1	0,9	0,6	1,5	1,3	0,9	0,8	14,4	15,4

Marriages and divorces by age of married and divorced 2004

Age	Married		Divorced		Married %		Divorced %	
	Women	Men	Women	Men	Women	Men	Women	Men
Total	3440	3440	505	505	100,0	100,0	100,0	100,0
Below 20	456	36	5	1	13,3	1,0	1,0	0,2
20 - 24	1202	653	64	16	34,9	19,0	12,7	3,2
25 - 29	971	1161	95	76	28,2	33,8	18,8	15,0
30 - 34	434	741	86	87	12,6	21,5	17,0	17,2
35 - 39	179	426	81	92	5,2	12,4	16,0	18,2
40 - 44	78	171	73	79	2,3	5,0	14,5	15,6
45 - 49	52	110	42	59	1,5	3,2	8,3	11,7
50 - 54	33	47	22	33	1,0	1,4	4,4	6,5
55 - 59	18	30	22	36	0,5	0,9	4,4	7,1
60 - 64	6	20	7	10	0,2	0,6	1,4	2,0
65 +	11	45	5	13	0,3	1,3	1,0	2,6
Unknown	-	-	3	3	-	-	0,6	0,6



Live births by sex, 1991-2003

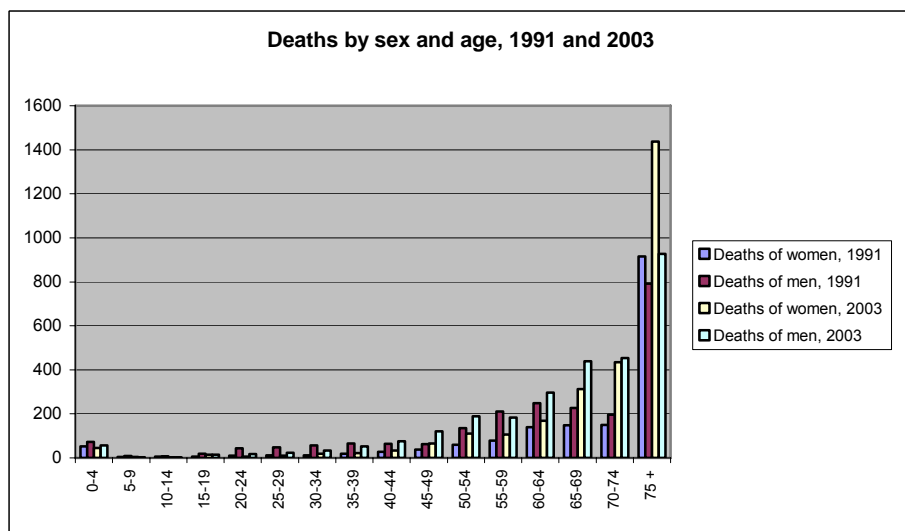
Year	Total	Girls	Boys	Girls %	Boys %	Girls per 100 boys	Boys per 100 girls
1991	9606	4689	4917	48.8	51.2	95	105
1992	9524	4466	5058	46.9	53.1	88	113
1993	8922	4217	4705	47.3	52.7	90	112
1994	8887	4325	4562	48.7	51.3	95	105
1995	9492	4549	4943	47.9	52.1	92	109
1996	9094	4394	4700	48.3	51.7	93	107
1997	8758	4183	4575	47.8	52.2	91	109
1998	9211	4476	4735	48.6	51.4	95	106
1999	8828	4270	4558	48.4	51.6	94	107
2000	9184	4416	4768	48.1	51.9	93	108
2001	8839	4196	4643	47.5	52.5	90	111
2002	8499	4037	4462	47.5	52.5	90	111
2003	8344	3995	4349	47.9	52.1	92	109

Live births by age of mother, 1991 and 2003

Age of mother	1991		2003		Live births %	
	Live births	Women	Live births	Women	1991	2003
Total	9606	309104	8344	314920	100.0	100.0
<i>under 15</i>	-	25351	-	21821	-	-
15-19	713	24885	429	23999	7.4	5.1
20-24	2965	23278	2492	24171	30.9	29.9
25-29	3178	23332	2615	22632	33.1	31.4
30-34	1843	23171	1756	20963	19.2	21.0
35-39	724	21780	765	20908	7.5	9.2
40-44	137	19821	182	22111	1.4	2.2
45-49	8	14409	4	22002	0.1	0.0
50+	3	18615	1	20523	0.0	0.0
<i>Unknown</i>	35	3198	100	3137	0.4	1.2

Deaths by sex and age, 1991 and 2003

Age	1991				2003				Deaths of women per 100 deaths of men	
	Deaths of women	Women	Deaths of men	Men	Deaths of women	Women	Deaths of men	Men	1991	2003
	Total	1690	309104	2280	305931	2809	314920	2895	305225	74
0-4	53	24558	73	26150	45	19111	56	20560	73	80
5-9	4	25616	8	26797	4	20626	3	21950	50	133
10-14	6	25351	7	26986	2	21821	1	23393	86	200
15-19	6	24885	19	25897	15	23999	15	25388	32	100
20-24	10	23278	43	25591	6	24171	18	24792	23	33
25-29	11	23332	48	25263	10	22632	23	22356	23	43
30-34	11	23171	56	24639	19	20963	33	20565	20	58
35-39	19	21780	65	23123	22	20908	52	20797	29	42
40-44	27	19821	64	19354	34	22111	75	22064	42	45
45-49	38	14409	62	13333	66	22002	120	22494	61	55
50-54	59	18615	135	17060	110	20523	189	19913	44	58
55-59	79	16111	211	15107	106	14900	183	13171	37	58
60-64	140	14855	248	13130	169	15840	297	13393	56	57
65-69	148	11009	226	8186	313	15442	439	13208	65	71
70-74	150	6431	196	4177	435	11889	454	9351	77	96
75 +	916	12684	792	8116	1437	14845	927	9425	116	155
Unknown	13	3198	27	3022	16	3137	10	2405	48	160



Deaths by sex min causes of death, 1991 and 2003

Causes of death	1991				2003			
	Women	Men	Women %	Men %	Women	Men	Women %	Men %
Total	1690	2280	100.0	100.0	2809	2895	100.0	100.0
<i>I00-I99</i>	750	835	44.3	36.8	1519	1354	54.0	46.8
<i>C00-D48</i>	231	357	13.7	15.6	374	593	13.3	20.5
<i>R00-R99</i>	438	551	25.9	24.2	458	379	16.3	13.1
<i>S00-T98</i>	56	254	3.3	11.1	72	161	2.6	5.6
<i>J00-J98</i>	36	62	2.1	2.7	132	142	4.7	4.9
<i>K00-K93</i>	35	68	2.1	3.0	60	78	2.1	2.7
<i>E00-E88</i>	39	24	2.3	1.1	75	56	2.7	1.9
<i>N00-N98</i>	17	26	1.0	1.1	39	46	1.4	1.6
<i>G00-H95</i>	20	20	1.2	0.9	10	13	0.4	0.4
<i>A00-B99</i>	8	12	0.5	0.4	4	14	0.1	0.5
<i>P00-P96</i>	14	28	0.8	1.2	30	31	1.1	1.1
<i>F00-F99</i>	29	20	1.7	0.9	19	12	0.7	0.4
<i>Q00-Q99</i>	12	19	0.7	0.8	9	9	0.3	0.3
<i>M00-M99</i>	1	-	0.1	-	-	3	-	0.1
<i>D50-D89</i>	1	4	0.1	0.2	6	3	0.2	0.1
<i>L00-L98</i>	-	-	-	-	2	1	0.1	-
<i>O00-O99</i>	3	-	0.2	-	-	-	-	-

<i>I00-I99</i>	<i>Illnesses of the bloodstream</i>
<i>C00-D48</i>	<i>Tumours</i>
<i>R00-R99</i>	<i>Symptoms, signs, pathological, clinical and laboratory medical records</i>
<i>S00-T98</i>	<i>Injuries, poisoning and the influence of external factors</i>
<i>J00-J98</i>	<i>Illnesses of respiratory organs</i>
<i>K00-K93</i>	<i>Illnesses of digestive organs</i>
<i>E00-E88</i>	<i>Illnesses of exocrine glands, nutrition and metabolism</i>
<i>N00-N98</i>	<i>Illnesses of urinary-sexual system</i>
<i>G00-H95</i>	<i>Illnesses of nervous system and senses</i>
<i>A00-B99</i>	<i>Infectious parasite-induced illnesses</i>
<i>P00-P96</i>	<i>States created in the prenatal period</i>
<i>F00-F99</i>	<i>Mental and behaviour disorders</i>
<i>Q00-Q99</i>	<i>Inborn anomalies, deformities and chromosome abnormalities</i>
<i>M00-M99</i>	<i>Illnesses of the muscular-skeleton system and the connective tissue</i>
<i>D50-D89</i>	<i>Illnesses of blood, blood-creating organs and lowered immunity</i>
<i>L00-L98</i>	<i>Illnesses of hypodermic tissue</i>
<i>O00-O99</i>	<i>Pregnancy, delivery, 40 days after delivery</i>

Specific fertility rates of women aged 15 – 19, 1991 – 2003

Specific fertility rates	1991	1992	1993	1994	1995	1996	1997	1998	1999	2000	2001	2002	2003
		28.5	25.4	24.3	21.8	23.6	22.8	19.9	20.9	18	21.1	19.2	17.9

Infant mortality by sex and age, 1991 and 2004

Age	1991					2004				
	Girls	Boys	Girls %	Boys %	Girls per 100 boys	Girls	Boys	Girls %	Boys %	Girls per 100 boys
Total	45	62	100.0	100.0	73	28	33	100,0	100,0	85
0-6 days	21	35	46.7	56.5	60	15	20	53,6	60,6	75
7-27 days	7	12	15.6	19.4	58	7	6	25,0	18,2	117
28 days to 2 months	5	2	11.1	3.2	250	3	3	10,7	9,1	100
3 –11 months	12	13	26.7	21.0	92	3	4	10,7	12,1	75

Infant mortality by sex and cause of death, 1991 and 2004

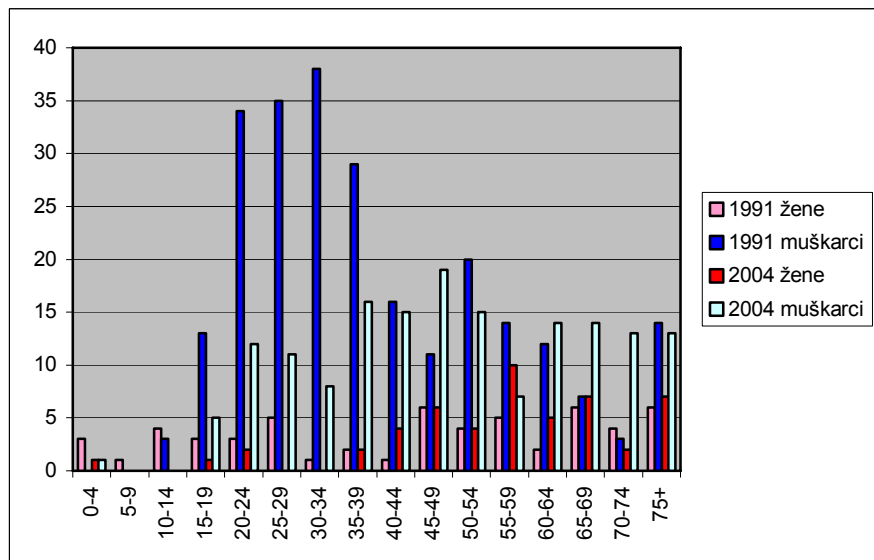
Cause of death	1991				2004			
	Girls	Boys	Girls %	Boys %	Girls	Boys	Girls %	Boys %
Total	45	62	100,0	100,0	28	33	100,0	100,0
A00-B99	1	2	2,2	3,2	-	-	-	-
C00-D48	-	-	-	-	-	-	-	-
D50-D89	-	-	-	-	-	-	-	-
E00-E88	-	-	-	-	-	-	-	-
G00-H93	2	-	4,4	-	-	1	-	3,0
I00-I99	1	-	2,2	-	2	2	7,1	6,1
J00-J98	1	2	2,2	3,2	-	-	-	-
K00-K93	-	2	-	3,2	-	-	-	-
N00-N98	-	-	-	-	-	-	-	-
P00-P96	14	28	31,1	45,2	20	24	71,4	72,7
Q00-Q99	11	13	24,4	21,0	1	1	3,6	3,0
R00-R99	13	15	28,9	24,2	5	5	17,9	15,2
F01-F99, H00-H59, L00-L98, M00-M99	-	-	-	-	-	-	-	-
V01-Y89	2	-	4,4	-	-	-	-	-

A00-B99	Infectious parasite-induced illnesses
C00-D48	Tumours
D50-D89	Illnesses of blood, blood-creating organs and lowered immunity
E00-E88	Illnesses of exocrine glands, nutrition and metabolism
G00-H93	Illnesses of nervous system and senses
I00-I99	Illnesses of the bloodstream
J00-J98	Illnesses of respiratory organs
K00-K93	Illnesses of digestive organs
N00-N98	Illnesses of urinary-sexual system
P00-P96	Some states created in the prenatal period
Q00-Q99	Inborn anomalies, deformities and chromosome abnormalities
R00-R99	Symptoms, signs, pathological, clinical and laboratory medical records, unclassified
F01-F99, H00-H59, L00-L98, M00-M99	All other illnesses
V01-Y89	External causes of death

Violent deaths by sex and age, 1991 and 2004

Age	1991				2004			
	Women	Men	Women %	Men %	Women	Men	Women %	Men %
Total	56	254	100,0	100,0	51	163	100,0	100,0
0-4	3	-	5,4	-	1	1	2,0	0,6
5-9	1	-	1,8	-	-	-	-	-
10-14	4	3	7,1	1,2	-	-	-	-
15-19	3	13	5,4	5,1	1	5	2,0	,1
20-24	3	34	5,4	13,4	2	12	3,9	7,4
25-29	5	35	8,9	13,8	-	11	-	6,7
30-34	1	38	1,8	15,0	-	8	-	4,9
35-39	2	29	3,6	11,4	2	16	3,9	9,8
40-44	1	16	1,8	6,3	4	15	7,8	9,2
45-49	6	11	10,7	4,3	6	19	11,8	11,7
50-54	4	20	7,1	7,9	4	15	7,8	9,2
55-59	5	14	8,9	5,5	10	7	19,6	4,3
60-64	2	12	3,6	4,7	5	14	9,8	8,6
65-69	6	7	10,7	2,8	7	14	13,7	8,6
70-74	4	3	7,1	1,2	2	13	3,9	8,0
75+	6	14	10,7	5,5	7	13	13,7	8,0
Unknown	-	5	-	2,0	-	-	-	-

Violent deaths by sex and age, 1991 and 2004



Maternal mortality rates 1991 – 2004

	1991	1992	1993	1994	1995	1996	1997	1998	1999	2000	2001	2002	2003	2004
Rate	3,1	1,0	1,1	4,5	-	-	1,1	3,3	-	-	2,3	-	-	-

EDUCATION

The term **school** refers to an educational institution or unit which deals with educational work by following the curriculum.

The **pupils of the first class of primary schools** are children aged 7 who enrolled in the first class of the primary school, with a smaller number of children aged 6 who enrol.

Pupils of the first class of secondary schools are children aged 15 who enrol in grammar schools, secondary vocational training schools or art schools that last 3 or 4 years.

Pupils of the **three-year schools** receive the third degree of educational attainment, while those in **four-year schools** receive the fourth degree of educational attainment.

A **student acquires his/her status** by enrolling in an institution. Persons who finished a corresponding secondary school have right to enrol in the first year of studies.

Teachers of primary and secondary schools represent the educational staff who takes part in the preparation, organization and holding of lessons, following the curriculum.

Teacher of high and higher schools are: regular professors, associate professors, docents, lecturers, lecturers at secondary and post-secondary schools, professors at post-secondary schools, working full-time or part-time.

A **graduated student** is the person who receives a degree after finished post-secondary school, university or arts academy.

A **Master of Sciences** is the person who defended his/her Masters thesis which was the result of his/her independent work. The student thus classified and extended the existing scientific knowledge.

A **Doctor of Sciences** is the person who earned a Masters degree, and after defending the doctorate thesis, he/she earned a PhD.

**Pupils enrolled in the first grade of regular primary education by sex,
1999/2000 and 2004/2005 school year**

Year	Number of enrolled		Number of enrolled girls per 100 boys
	Girls	Boys	
1999/2000	4223	4682	90
2004/2005	4218	4709	90

**Pupils enrolled in the first grade of regular primary education by sex (in %),
1999/2000 and 2004/2005 school year**

Year	Enrolled pupils (%)	
	Girls	Boys
1999/2000	47.4	52.6
2004/2005	47.2	52.8

**Students enrolled in the first grade of regular secondary education by sex,
1999/2000. and 2004/2005 school years**

Year	Number of enrolled		Number of enrolled girls per 100 boys
	Girls	Boys	
1999/2000	4717	4826	98
2004/2005	4393	4736	93

**Students enrolled in the first grade of regular secondary education, by sex (in %),
1999/2000 and 2004/2005 school year**

Year	Enrolled students (%)	
	Girls	Boys
1999/2000	49.4	50.6
2004/2005	48.1	51.9

Students enrolled to the first year of studies in the University of Montenegro by sex, 1999/2000 and 2004/2005 school year

Year	Number of enrolled		Number of enrolled women per 100 men
	Women	Men	
1999/2000	1751	1731	101
2004/2005	2542	2022	126

Students enrolled to the first year of studies in the University of Montenegro by sex (in %), 1999/2000 and 2004/2005 school year

Year	Enrolled students (%)	
	Women	Men
1999/2000	50.3	49.7
2004/2005	55.7	44.3

Graduate students in the University of Montenegro by sex, 1999 and 2004

Schools, faculties and academies	1999		2004		Number of women per 100 men	
	Women	Men	Women	Men	1999	2004
Post-secondary schools ¹⁾	146	143	273	201	102	136
High schools	-	-	9	25	-	36
Faculties	358	255	555	352	140	158
Faculties of Art and academies	36	15	27	14	240	193

¹⁾ Graduated according to existing programme of two-year studies.

**Masters and Doctors of Sciences titled in the University of Montenegro by sex,
1999 and 2004**

Title	1999		2004		Women per 100 men	
	Women	Men	Women	Men	1999	2004
Master	6	4	17	15	150	113
PhD	2	8	3	7	25	43

**Masters and Doctors of Sciences titled in the University of Montenegro by sex (u %),
1999 and 2004**

Title	1999		2004	
	Women	Men	Women	Men
Master	60.0	40.0	53.1	46.9
PhD	20.0	80.0	30.0	70.0

**Teachers in primary, secondary, post-secondary schools, faculties and academies
by sex, 1999/2000 and 2004/2005 school year**

Schools, faculties and academies	1999/2000		2004/2005		Women per 100 men	
	Women	Men	Women	Men	1999	2004
Primary schools	3179	1771	3295	1501	179	219
Secondary schools	1187	1007	1300	945	118	138
Post-secondary schools ¹⁾	12	21	8	23	57	35
Faculties	203	407	288	414	50	70
Faculties of Art and academies	28	48	36	50	58	72

¹⁾ Since school year 2003/2004, post-secondary school.continued as faculty.

**Teachers in primary, secondary, post-secondary schools, faculties and academies
by sex (in %), 1999/2000 and 2004/2005 school year**

Schools, faculties and academies	1999/2000		2004/2005	
	Women	Men	Women	Men
Primary schools	64.2	35.8	68.7	31.3
Secondary schools	54.1	45.9	57.9	42.1
Post-secondary schools ¹⁾	36.4	63.6	25.8	74.2
Faculties	33.3	66.7	41.0	59.0
Faculties of Art and academies	36.8	63.2	41.9	58.1

¹⁾ Since school year 2003/2004, post-secondary school.continued as faculty.

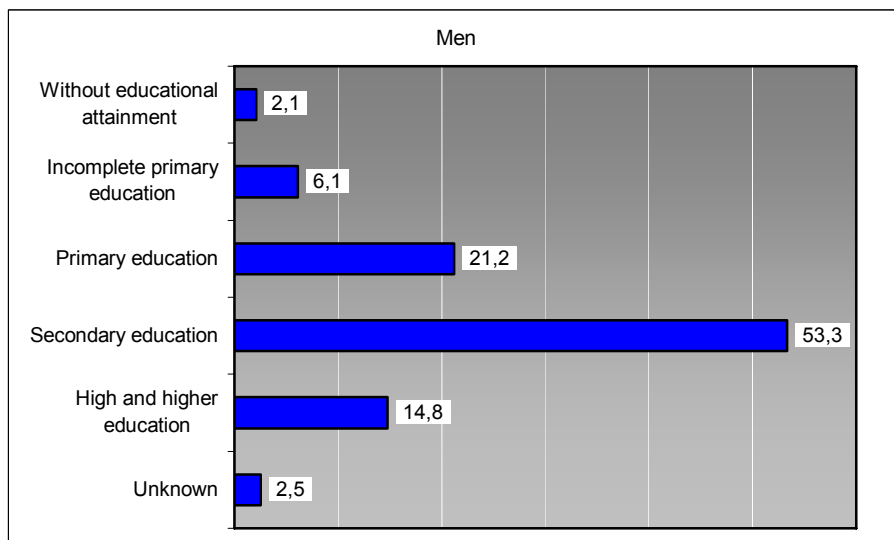
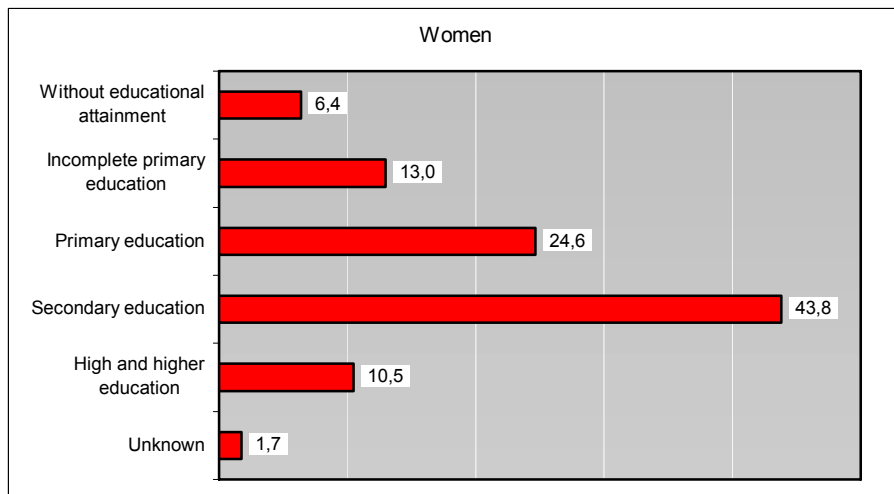
Population aged 15 and more by sex and educational attainment, 1991 and 2003

Educational attainment	1991		2003		Women per 100 men	
	Women	Men	Women	Men	1991	2003
<i>Total</i>	233579	225998	253362	239322	103	106
<i>Without educational attainment</i>	31486	9238	16186	5024	341	322
<i>Incomplete primary education</i>	47738	27324	32834	14652	175	224
<i>Primary education</i>	68336	67209	62414	50671	102	123
<i>Secondary education</i>	68023	92712	111050	127621	73	87
<i>High and higher education</i>	14928	25785	26498	35341	58	75
<i>Unknown</i>	3068	3730	4380	6013	82	73

Population aged 15 and more by sex and educational attainment (in %), 1991 in 2003

Educational attainment	1991		2003	
	Women	Men	Women	Men
Total	100,0	100,0	100,0	100,0
<i>Without educational attainment</i>	13,4	4,1	6,4	2,1
<i>Incomplete primary education</i>	20,4	12,1	13,0	6,1
<i>Primary education</i>	29,3	29,7	24,6	21,2
<i>Secondary education</i>	29,2	41,0	43,8	53,3
<i>High and higher education</i>	6,4	11,4	10,5	14,8
<i>Unknown</i>	1,3	1,7	1,7	2,5

Population aged 15 and more by sex and educational attainment (in %), 2003



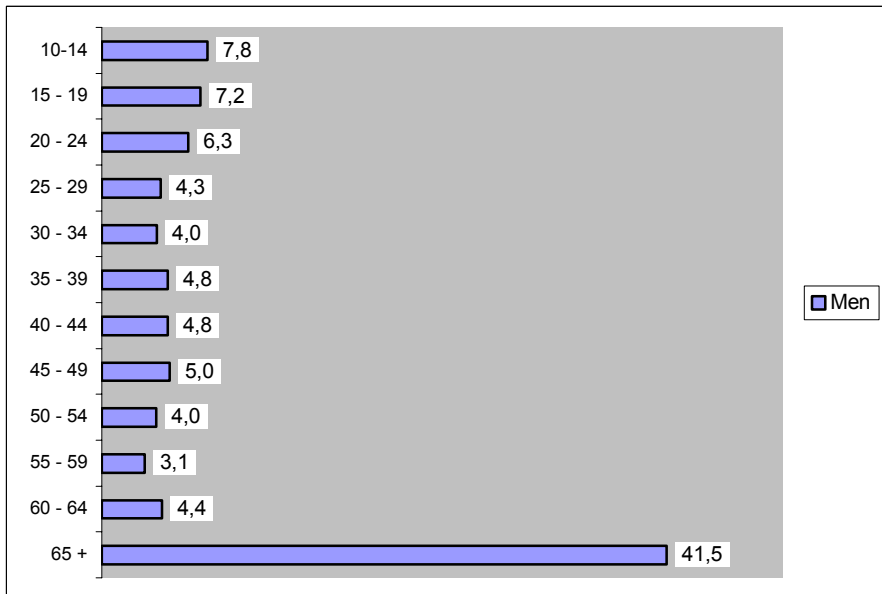
Illiterate population aged 10 and above in 2003 and 15 and above in 1991, by sex and age

Age	1991		2003		Women per 100 men	
	Women	Men	Women	Men	1991	2003
Illiterate	25020	5018	10611	2006	499	529
10 – 14	-	-	168	156	-	108
15 – 19	219	181	156	145	121	108
20 – 24	270	187	152	127	144	120
25 – 29	240	172	127	87	140	146
30 – 34	334	153	126	81	218	156
35 – 39	341	130	162	97	262	167
40 – 44	467	144	177	97	324	182
45 – 49	599	136	233	100	440	233
50 – 54	1428	213	247	80	670	309
55 – 59	2877	376	313	63	765	497
60 – 64	3974	566	571	89	702	642
65+	13979	2699	7882	832	518	947
Unknown	292	61	297	52	479	571

Illiterate population aged 10 and above in 2003 and 15 and above in 1991, by sex and age (in %)

Age	1991		2003	
	Women	Men	Women	Men
Total	100.0	100.0	100.0	100.0
10 – 14	-	-	1.6	7.8
15 – 19	0.9	3.6	1.5	7.2
20 – 24	1.1	3.7	1.4	6.3
25 – 29	1.0	3.4	1.2	4.3
30 – 34	1.3	3.0	1.2	4.0
35 – 39	1.4	2.6	1.5	4.8
40 – 44	1.9	2.9	1.7	4.8
45 – 49	2.4	2.7	2.2	5.0
50 – 54	5.7	4.2	2.3	4.0
55 – 59	11.5	7.5	3.0	3.1
60 – 64	15.9	11.3	5.4	4.4
65+	55.9	53.8	74.3	41.5
Unknown	1.2	1.2	2.8	2.6

Illiterate population aged 10 and more in 2003 by sex and age (in %)



SOCIAL WELFARE

Children in pre-school institutions, who receive daily tutorage, are looked after, nurtured and educated until they are 7, the age when they start school.

Students in student hostels of primary and secondary schools are educated out of the place of residence of their parents who financially support them. They are provided with accommodation, food and education.

Hostels provide accommodation and food for students of faculties, universities and arts academies during the studies.

Social welfare beneficiary is every person who used certain forms and measures of social welfare and social welfare services during the reporting year.

Children in kindergartens and employees in kindergartens by sex, 1999 and 2004

Year	Number of children		Girls per 100 boys	Number of employees	
	Girls	Boys		Women	Men
1999	5396	6163	88	1070	24
2004	5656	6105	93	1121	86

Children in kindergartens and employees in kindergartens by sex (in %), 1999 and 2004

Year	Children (%)		Employees (%)	
	Girls	Boys	Women	Men
1999	46.7	53.3	97.8	2.2
2004	48.1	51.9	92.9	7.1

Pupils, students and employees in hostels by sex, 1999 and 2004

Year	Number of pupils and students		Girls per 100 boys	Employees		Women per 100 men
	Girls	Boys		Women	Men	
1999	1162	1049	111	96	151	64
2004	1610	918	175	161	100	161

Pupils, students and employees in hostels by sex (in %), 1999 and 2004

Year	<i>Pupils and student (%)</i>		<i>Employees (%)</i>	
	<i>Girls</i>	<i>Boys</i>	<i>Women</i>	<i>Men</i>
1999	52.6	47.4	38.9	61.1
2004	63.7	36.3	61.7	38.3

Minor and adult beneficiaries of social protection by sex, 1999 and 2004

Year	<i>Number of minor beneficiaries</i>		<i>Girls per 100 boys</i>	<i>Number of adult beneficiaries</i>		<i>Women per 100 men</i>
	<i>Girls</i>	<i>Boys</i>		<i>Women</i>	<i>Men</i>	
1999	5116	6540	78	8569	10208	84
2004	7876	9573	82	13407	15681	85

Minor and adult beneficiaries of social protection by sex (in %), 1999 and 2004

Year	<i>Minor beneficiaries (%)</i>		<i>Adult beneficiaries (%)</i>	
	<i>Girls</i>	<i>Boys</i>	<i>Women</i>	<i>Men</i>
1999	43.9	56.1	45.6	54.4
2004	45.1	54.9	46.1	53.9

CRIME

Convicted persons are those found guilty and sentenced by the courts of general jurisdiction in the corresponding year.

A validly convicted minor is the person aged between 14 and 18, convicted of a crime by a court of general jurisdiction in accordance with the criminal code.

A validly convicted adult is the person aged over 18, convicted of a crime by a court of general jurisdiction in accordance with the criminal code.

Convicted minors according to type of crime and sex, 1999 and 2004

Type of crime	1999			2004		
	Girls	Boys	Girls per 100 boys	Girls	Boys	Girls per 100 boys
TOTAL	10	157	6	3	88	3
Crimes against:						
<i>Persons</i>	2	15	13	-	11	-
<i>Economy</i>	-	8	-	-	9	-
<i>Property</i>	8	120	7	-	52	-
<i>Traffic safety</i>	-	8	-	1	5	20
<i>Public law and order</i>	-	2	-	1	5	20
<i>Other crimes</i>	-	4	-	1	6	17

Convicted adults according to type of crime and sex, 1999 i 2004

Type of crime	1999			2004		
	Women	Men	Women per 100 men	Women	Men	Women per 100 men
TOTAL	137	2118	6	138	1865	7
Crimes against:						
<i>Constitution and safety of SaM</i>	-	-	-	-	-	-
<i>Persons</i>	13	276	5	9	196	5
<i>Freedoms and rights of an individual</i>	-	21	-	-	34	-
<i>Working relations</i>	-	2	-	-	-	-
<i>Honour</i>	9	25	36	5	12	42
<i>Dignity of man and ethics</i>	-	9	-	-	10	-
<i>Marriage and families</i>	-	14	-	-	74	-
<i>Health</i>	-	3	-	3	63	5
<i>Economy</i>	24	522	5	12	292	4
<i>Property</i>	19	400	5	27	394	7
<i>Safety of individuals and property</i>	4	34	12	3	14	21
<i>Traffic safety</i>	25	535	5	24	309	8
<i>Judiciary</i>	1	10	10	-	19	-
<i>Public law and order</i>	19	182	10	53	419	13
<i>Working duties</i>	11	29	38	2	27	7
<i>Other crimes</i>	12	56	21	-	2	-

Convicted minors by age and sex, 1999 and 2004

Age	1999			2004		
	Girls	Boys	Girls per 100 boys	Girls	Boys	Girls per 100 boys
UKUPNO	10	157	6	3	88	3
Age 14	1	15	7	-	6	-
15	5	41	12	1	11	9
16	-	38	-	-	27	-
Age 17	4	63	6	2	44	4

Convicted adults by age and sex, 1999 and 2004

Age	1999			2004		
	Women	Men	Women per 100 men	Women	Men	Women per 100 men
TOTAL	137	2118	6	138	1865	7
18 – 20	4	226	2	8	175	5
21 – 24	12	337	4	14	311	4
25 – 29	29	332	9	21	293	7
30 – 39	38	610	6	39	434	9
40 – 49	29	382	8	27	325	8
50 – 59	12	131	9	15	179	8
60 +	13	100	13	10	92	11
Unknown	-	-	-	4	56	7

EMPLOYMENT AND WAGES

Active population comprises persons aged 15 and above who perform an occupation, as well as unemployed persons looking for employment and persons which temporarily stopped to perform an occupation, due to military service (active persons not performing occupation).

The term **activity** refers to the economic activity of an enterprise, shop, institution, cooperative, etc. a person works for.

Data on average earnings show earnings paid out in a year. Average employed person earnings comprise earnings realized by an employed person during regular working hours, raised earnings and other income.

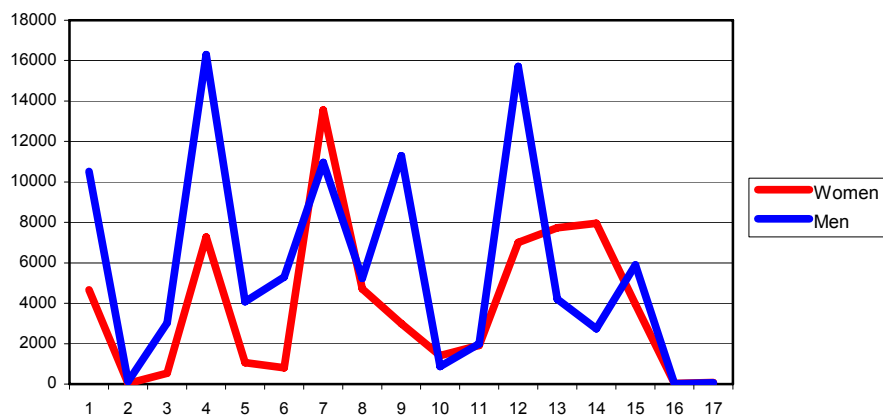
Population according to activity and sex, 2003

Title and type of settlement	Total	Women	Active population				Persons with personal income			Supported population
			Total	Performing occupation	Female		Total	Female	Total	
					Total	Performing occupation				Total
Montenegro	620145	314920	264276	171325	112169	67900	102223	51310	251677	150764
Urban	383808	197371	171775	114958	79235	50371	62288	33447	148599	84310
Other	236337	117549	92501	56367	32934	17529	39935	17863	103078	66454

Active population performing occupation according to activity and sex, 2003

Activity	Total	Women	Men	Structure in %		Women per 100 men
				Women	Men	
Total	171325	67900	103425	100,00	100,00	66
1.Agriculture, hunting and forestry	15185	4670	10515	6,88	10,17	44
2.Fishing	150	27	123	0,04	0,12	22
3.Mining and quarrying	3546	531	3015	0,78	2,92	18
4.Manufacturing industry	23558	7272	16286	10,71	15,75	45
5.Electricity, gas and water supply	5139	1054	4085	1,55	3,95	26
6.Construction	6101	807	5294	1,19	5,12	15
7.Retail and whole sale	24514	13554	10960	19,96	10,60	124
8.Hotels and restaurants	9957	4714	5243	6,94	5,07	90
9.Transportation, warehousing and communications	14280	2987	11293	4,40	10,92	26
10.Financial intermediary	2278	1403	875	2,07	0,85	160
11.Real estate, renting	3903	1913	1990	2,82	1,92	96
12.Public administration, defence and social insurance	22709	7009	15700	10,32	15,18	45
13.Education	11947	7738	4209	11,40	4,07	184
14.Health and social service	10689	7958	2731	11,72	2,64	291
15.Other communal, social and personal services	9861	3960	5901	5,83	5,71	67
16.Private households with employed persons	53	34	19	0,05	0,02	179
17.Exteritorial organiz. and bodies	148	79	69	0,12	0,07	114
Unknown	7307	2190	5117	3,23	4,95	43

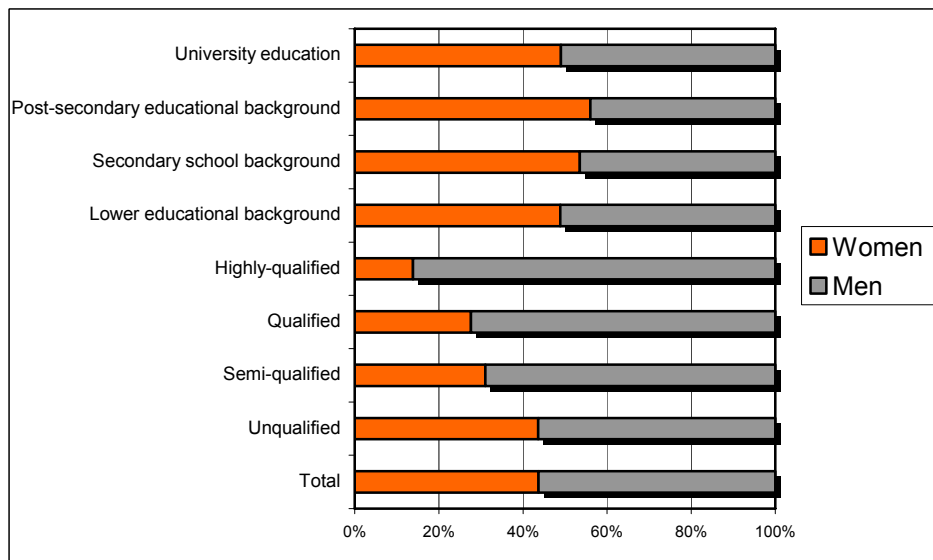
Active population performing occupation by activity and sex, 2003



Employees by sex and educational background, 2004

Educational background	Employees			Structure %		Women per 100 men
	Total	Women	Men	Women	Men	
Total	143479	62700	80779	43,70	56,30	78
<i>Unqualified</i>	12739	5551	7187	43,57	56,42	77
<i>Semi-qualified</i>	7183	2230	4954	31,05	68,97	45
<i>Qualified</i>	25236	6980	18256	27,66	72,34	38
<i>Highly-qualified</i>	8873	1231	7642	13,87	86,13	16
<i>Lower educational background</i>	7071	3456	3615	48,88	51,12	96
<i>Secondary school background</i>	45882	24547	21335	53,50	46,50	115
<i>Post-secondary educational background</i>	11635	6517	5118	56,01	43,99	127
<i>University education</i>	24860	12189	12671	49,03	50,97	96

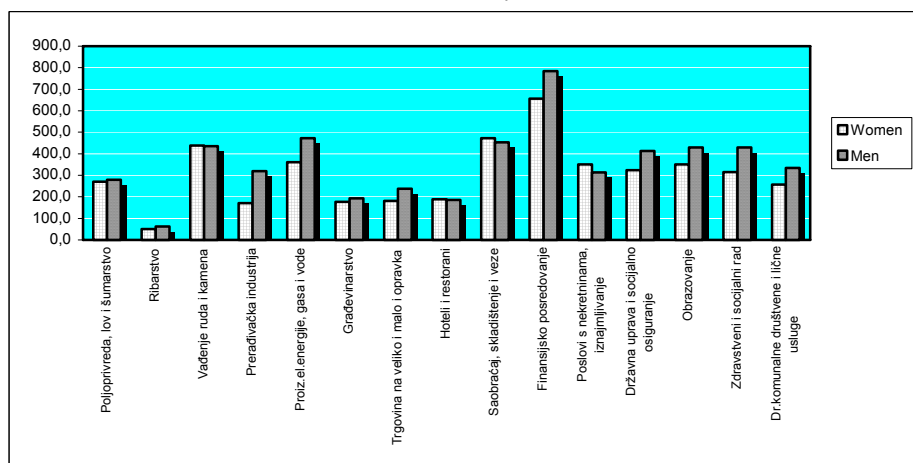
Employees by sex and educational background (in %) 2004



Average salaries by sex and activity sector, 2004
as on 31st March – 30th .September 2004

Activity sector	Average salaries			Ratio between average salaries of women and men compared to gross salaries		Average salaries of women ratio to average salaries of men
	Total	Women	Men	Women	Men	
Total	326	290	354	88.8	108.7	81.7
Agriculture, hunting and forestry	276	270	279	97.9	100.9	97.0
Fishing	59	51	62	87.1	106.7	81.7
Mining and quarrying	436	438	436	100.5	99.9	100.6
Manufacturing	274	171	319	62.4	116.2	53.7
Electricity, gas and water supply	450	360	473	80.0	105.0	76.2
Construction	190	177	193	93.0	101.3	91.9
Wholesale and retail trade, repair of motor vehicles	207	181	238		87.6	114.9
Hotels and restaurants	187	188	185	100.8	99.1	101.7
Transport, storage and communication	458	472	453	103.0	98.9	104.2
Financial intermediation	701	656	785	93.6	112.0	83.6
Real estate, renting and business activit.	329	351	314	106.4	95.2	111.8
Public administration and social security	366	323	413	88.3	112.7	78.4
Education	377	351	429	93.0	113.8	81.7
Health and Social work	346	315	430	91.1	124.3	73.3
Other communal, social and personal service activities	304	257	334		84.6	109.9
				84.6	109.9	77.0

Average salaries by sex and activity sectors, 2004
as on 31st March – 30th .September 2004



CIP