

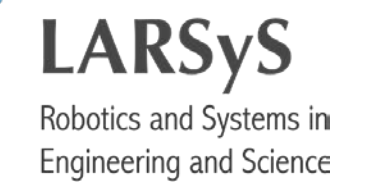
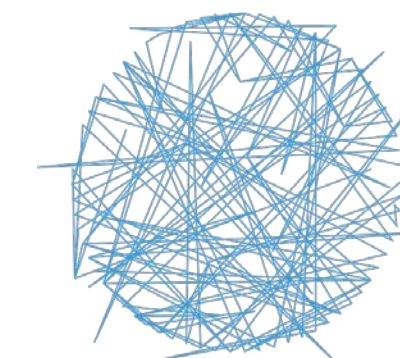


m-iti

Madeira Interactive
Technologies Institute

1. Context
2. Proposal Structure
3. Recommendations
4. Results

A research and innovation institute established as an independent non-profit R&D organisation





Chris
Csikszentmihályi



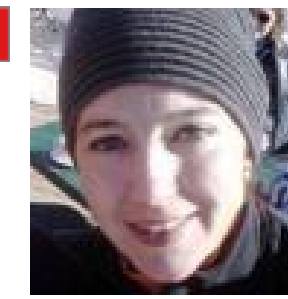
Larry Constantine



Bob Spence



Nuno Nunes



Valentina Nisi



Pedro Campos



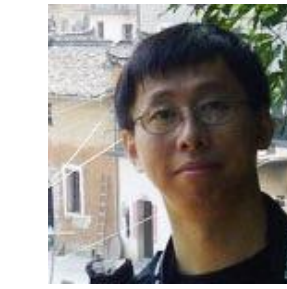
Evan Karapanos



Karolina Baras



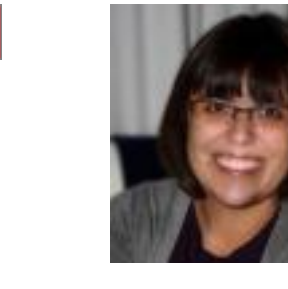
David Aveiro



Monchu Chen



Morgado Dias



Lina Brito



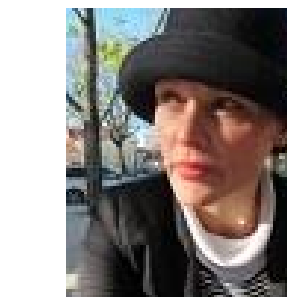
Luisa Soares



Paulo Lobo



Claudia Silva



Simone Ashby



Monica Cameirão



Sergi Bermudez



Jose Luis Silva



Yoram Chisik



Sónia Matos



James Auger



Mary Amasia



Diogo Cabral



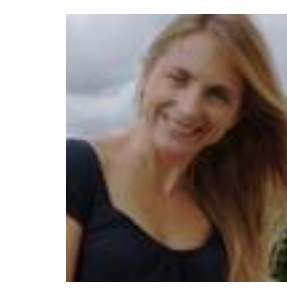
Julian Hanna



Bongkeum Jeong



Nuno Correia



Mónica Mendes



Jesús Ibanez



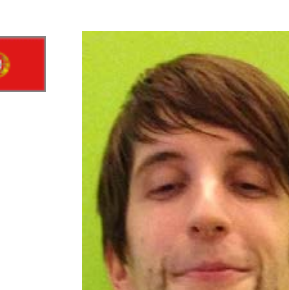
Arminda Lopes



Marisa Cohn



Mary Barreto



Marko Radeta



Maurizio Teli



Dulce Pacheco



Filipe Quintal



José Nocera



Shujoy
Chakraborty



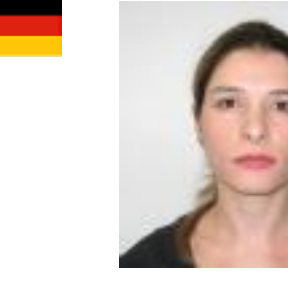
Deborah Castro



Lucas Pereira



Johannes
Schoening



Mariacristina
Sciannamblo



Catia Prandi

44 Members (27 integrated)

1 ERA Chair

2 Institute Fellows

4 Research Faculty

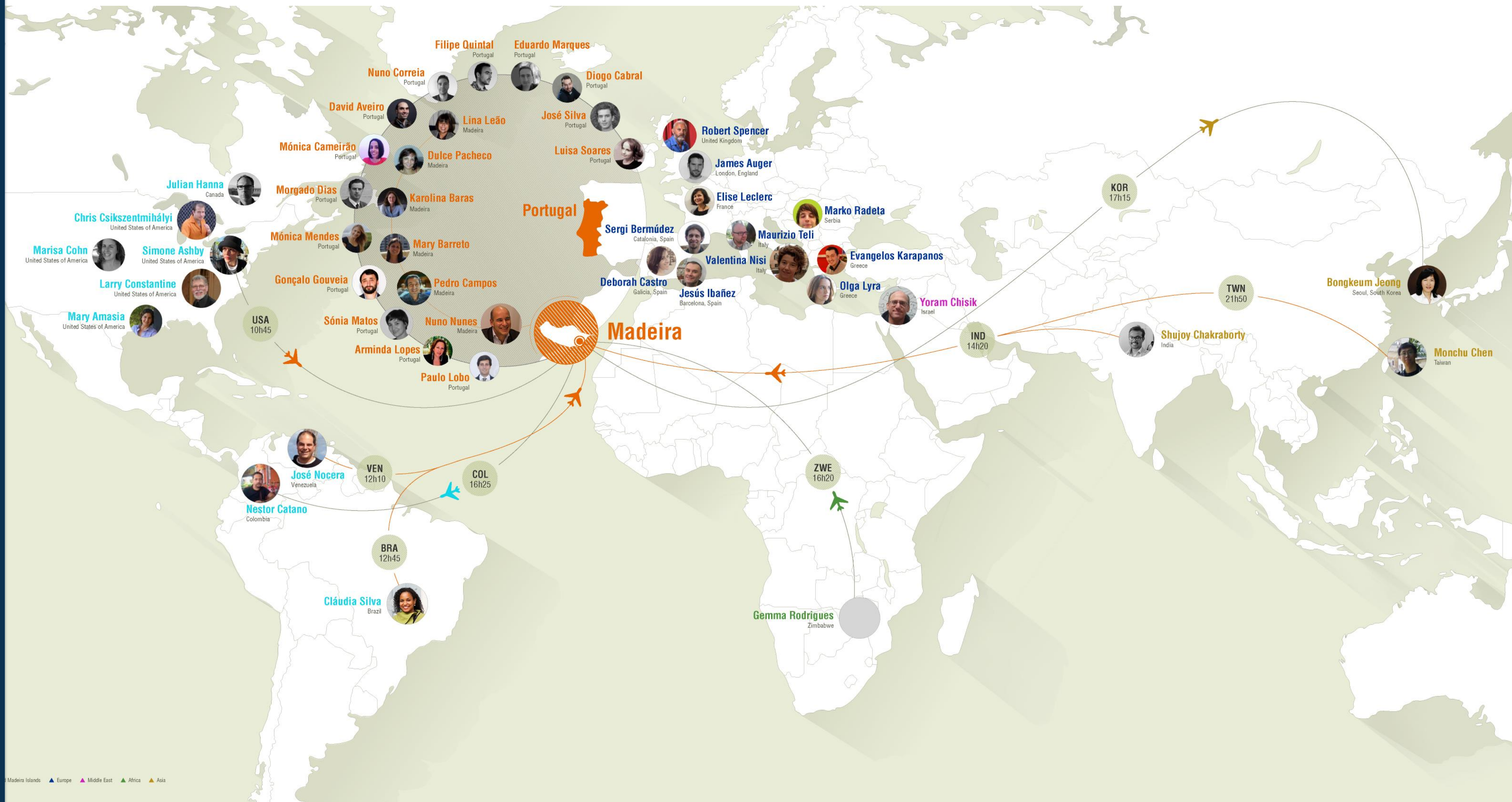
8 Faculty from other institutions

12 Post docs

14 countries, 10 languages

computer science, engineering, psychology,
design, art, anthropology, educational
sciences, literature, linguistics...

faculty



leapFROG M-ITI

Enhancing the Research and Innovation Potential of M-ITI through
Human-Computer Interaction and Design Innovation
Grant Agreement no: 621413

<https://erachair.m-iti.org/>

Submitted under FP7-ERAC Chairs – Pilot Call -2013

The first ERA Chair project in Portugal

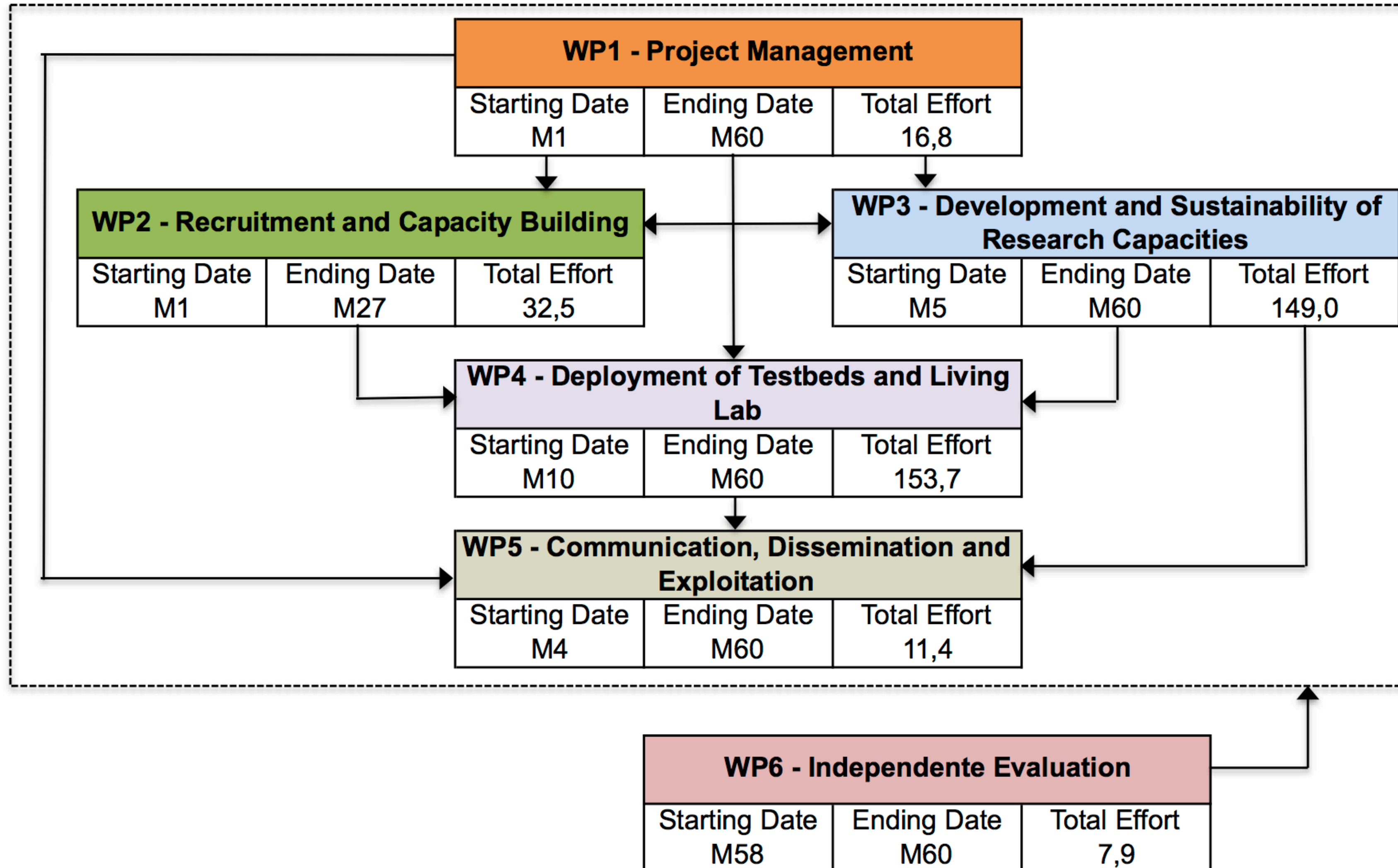


1. Update the R&D capacity and capability by expanding the human potential and fostering a critical mass of researchers with inter-disciplinary expertise in human-computer interaction (HCI);
2. Improve M-ITI's innovation potential and impact at the regional, national and European levels, through design-driven innovation
3. Raise international awareness about the institute and connect M-ITI and its industry affiliates to the global knowledge networks



Key Points from Evaluation

1. Objectives are linked and relevant to the regional and national innovation strategies for smart specialization;
2. SWOT analyses precise and realistic. The proposed activities matched the results;
3. Recruitment & selection follows open, transparent and merit-based process;
4. Description of the ERA Chair holder position in the institutional structure
5. Dissemination & Impact





Recruitment



PACK YOUR BAG...



Madeira Interactive
Technologies Institute (M-ITI)
invites applications for:

**European Research Area
(ERA) Chair in HCI**

discover more at:
<http://erachair.m-iti.org>



Christopher Csikszentmihályi appointed ERAChair of HCI and Design Innovation



Massachusetts
Institute of
Technology



ERA Chair

ERA Chair Team



Nuno Nunes
President of Board
Portugal



Christopher Csikszentmihályi
ERA Chair
MIT – Civic Media - USA



James Auger
Design Faculty
Royal College of Art - UK



Maurizio Teli
Sociology
University of Trento - Italy



Julian Hanna
Literature, Digital Culture
Canada



Gemma Rodrigues
Research Fellow
Zimbabwe



Elise Leclerc
Executive Director
France



Jude Mukundane
PhD Student
Uganda



Michelle Kasprzak
PhD Student
France



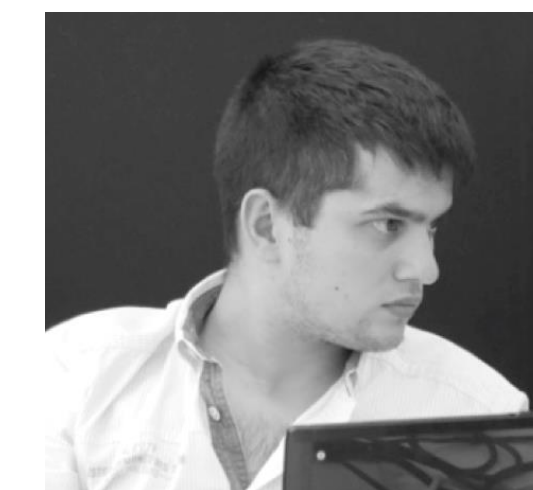
Sara Tranquada
PhD Student
Portugal



Cátia Jardim
Project Manager
Portugal



Elsa Ferreira
Project Manager
Portugal



Vitor Aguiar
Research Assistant
Portugal



Wilson Azevedo
Research Assistant
Portugal



ERA Chair conversation:
<https://vimeo.com/195278662>

1. Finding the right person
1. Keeping the right person

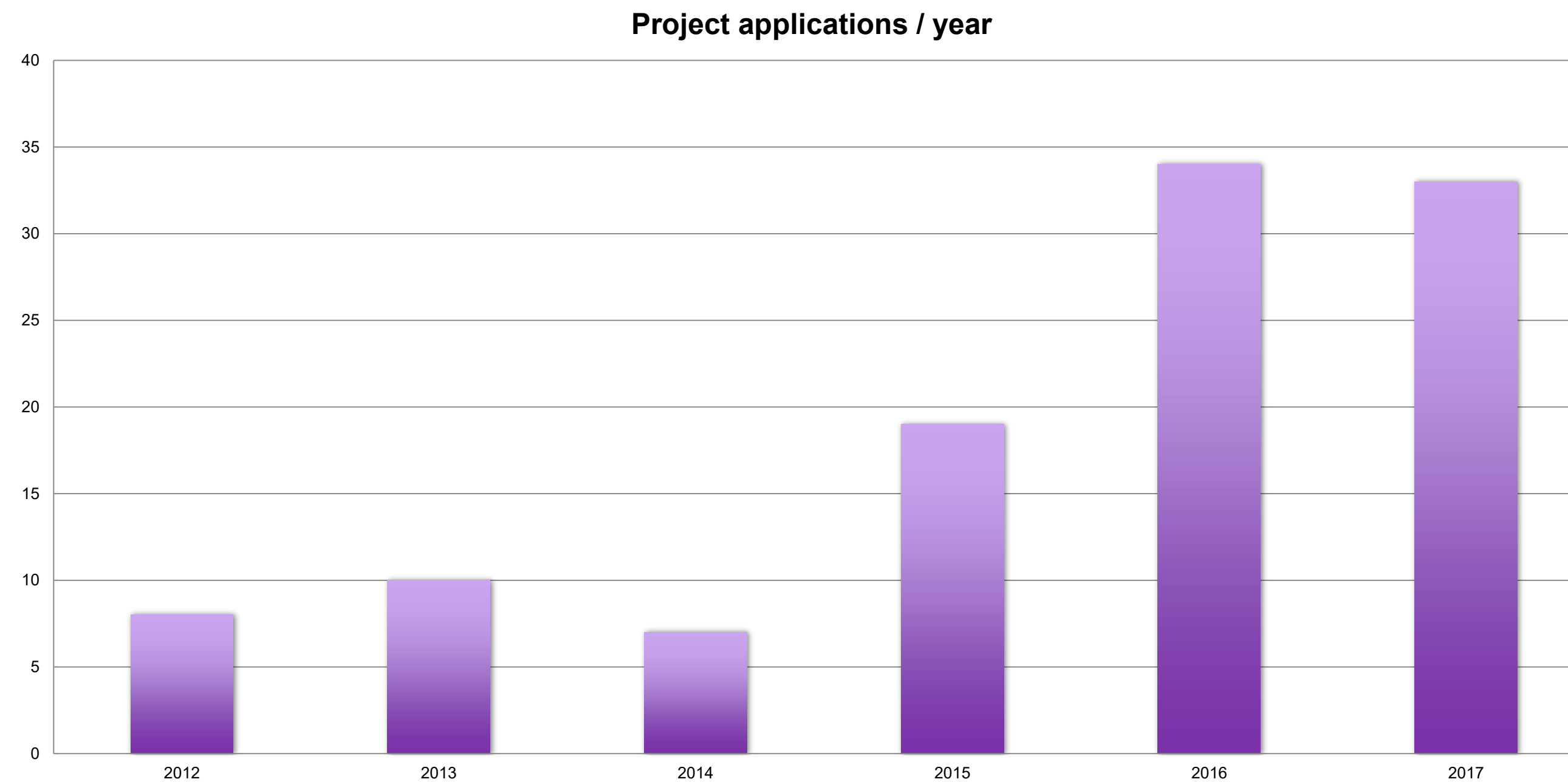
Recommendations:

1. Proactive search
2. Prepare the environment



1. Location
1. Salaries levels
2. Administration
3. Language
4. Bureaucracy, legislation
5. Procurement

1. Recruitment of the ERA Chair Team
1. Establishment of new networks that led to a significant increase in grant applications



3. Regional/National and International recognition

President of the Portuguese Republic visit to M-ITI

18th November 2015



M-ITI participates in the SMARTFUNCAL'17 conference

Our president, Professor Nuno Nunes gave the lecture "Mobility Analysis based on IoT Technology: the case study of Funchal" at the SMARTFUNCAL'17 conference,...



Visit of Carlos Moedas, the European Commissioner for Research, Science and Innovation

April 22, 2016

The European Commissioner for Research, Science and Innovation, Carlos Moedas, visited M-ITI, on April 21, 2016.

At the **Critical Technical Practice – ERA Chair Lab, Carlos Moedas said “**

“It’s one of the best centers I’ve seen until today, in a year and a half, in terms of combining technology, creativity, design and marketing, in other words, a wider vision than innovation itself. And, I can tell you that I have never seen a center like M-ITI, in a year and a half, which is so complete in this new idea of innovation.”



Madeira-ITI

Madeira Interactive Technologies Institute

News

M-ITI and the CTP lab in the media

April 24, 2017

The ACM Interactions magazine will soon publish an article about our CTP Lab, in their next May-June edition. Have a look at the [online version](#).



M-ITI Participates at the Week of Innovative Regions of Europe

Two of our faculty members were invited for the *Week of Innovative Regions of Europe (WIRE 2017)* that took place at the University of Košice, Slovakia,...



M-ITI Hosts an Advisory Board

M-ITI hosted its Advisory Board meeting on July 3-4. During these two intensive days, the Advisory board members: Don Norman, the director of The Design Lab at University of California (USA), Lucy Suchman, Professor...



Strategic Narratives of Technology and Africa Conference Registration

Early registrations are now open for the Strategic Narratives of Technology and Africa. The conference will take place in Funchal, Madeira - September 1 & 2! Register...



4. CTP Group

The Critical Technical Practice Lab (CTP) was founded in 2015 through the LeapFrog M-ITI ERAChair Grant (Agreement 621413), by Prof. Christopher Csíkszentmihályi.

We are a research unit of Madeira Interactive Technologies Institute (M-ITI), part of the LARSYS integrated laboratory of the Instituto Superior Técnico in Lisboa. M-ITI specializes in Human Computer Interaction (HCI) from a multidisciplinary perspective. CTP builds technologies by applying learnings from STS and humanist thought, with a focus on social justice and civic media.





m-iti

Madeira Interactive
Technologies Institute



Cátia Jardim

m-iti.org