

EXAPTATION
(or the good habit of using what's available)

The 98 square meters of Venetian ground floor hosting the Montenegro Pavilion during the 16th Architecture Biennale should be considered part of the Montenegrin territory to all extents and purposes.

As isolated fragment of the country's landscape, this tiny space can be used as a sample to conduct advanced in-vitro experiments, following a concrete research logic.

(The term "concrete" here is used as in "concrete music", to signify a radical approach based on the manipulation of a pre-existent material that challenges the dualism between language and physical sign, system of references and material order, cultural and natural reality.)

The discoveries produced by these tests would possibly resonate with specific literature, local research and fieldworks, whose outcomes would naturally overlap and affect the organization of the pavilion environment.

As many other fragments of Montenegrin landscape, at completely different scales, the empty space of the pavilion is caught in an accidental moment of transition: it just needs to be completely freed from the burden of what it was supposed to be, to encourage its generosity.

The relationships between form and function are always potentially redundant: an association produced for a specific reason in a certain moment in time can be co-opted for a totally different use, without basically changing the hosting structure.

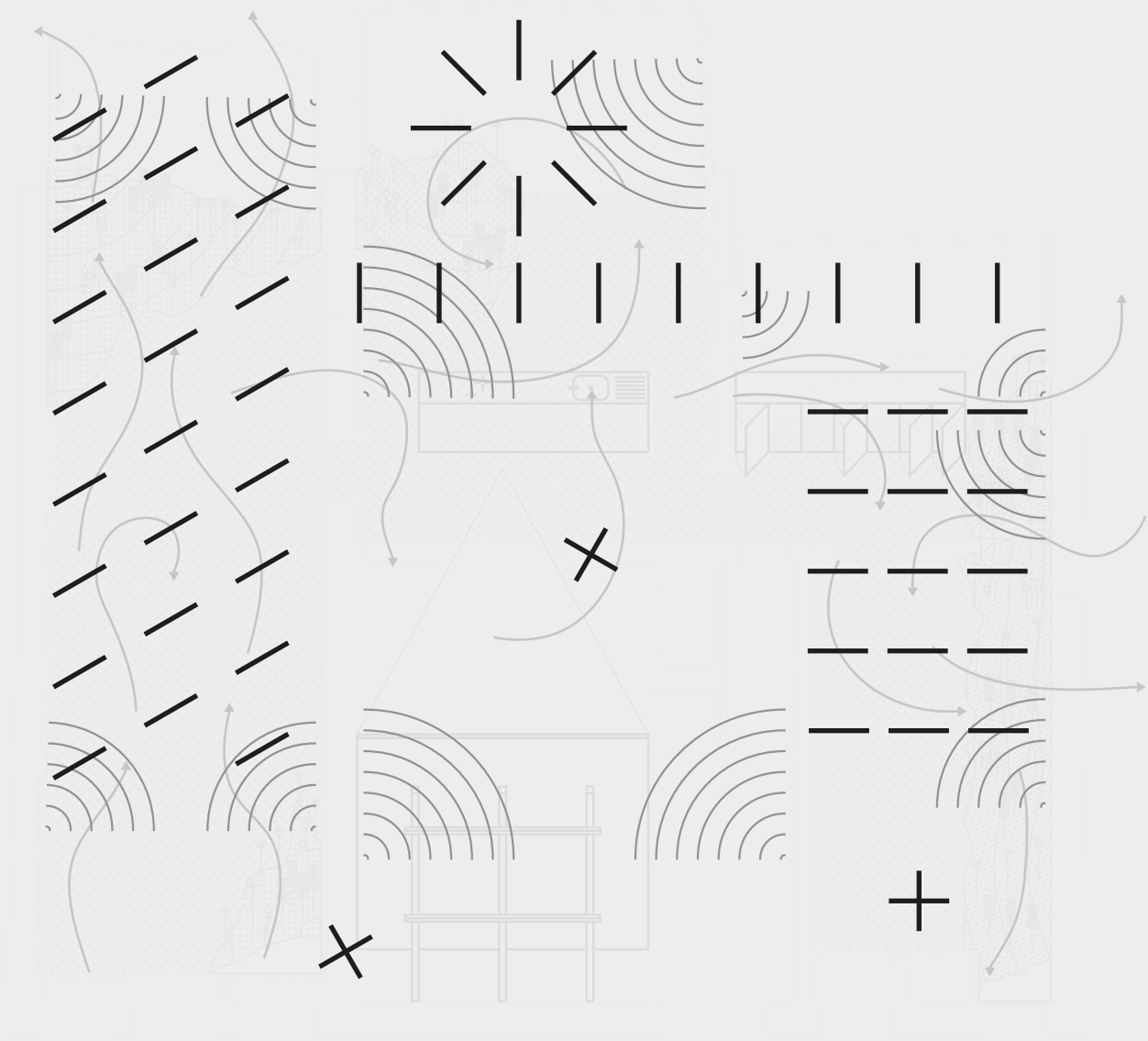
In biology, this imperfect functional relationship is named *exaptation* (J.Gould, S.Vrba, 1982), to indicate how organisms often adapt already available structures to match innovative functions, in a completely opportunistic way.

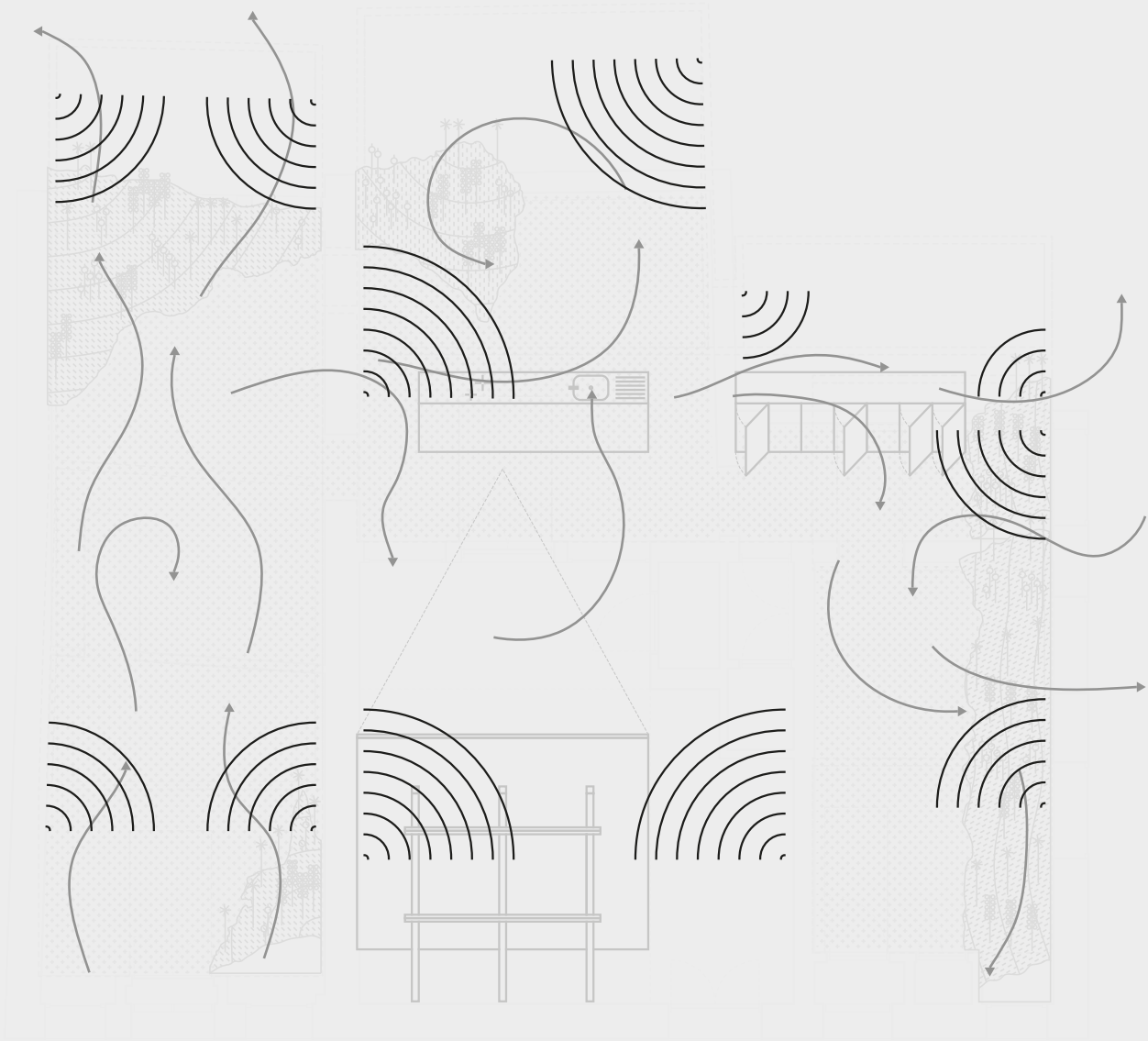
Unlike proper adaptation, in which historical genesis and current utility are dominant, *exaptation* describes features that are non-adaptable, but available for useful co-optation. Bird feathers are a classic example: initially they may have evolved for temperature regulation, but later were co-opted for flight.

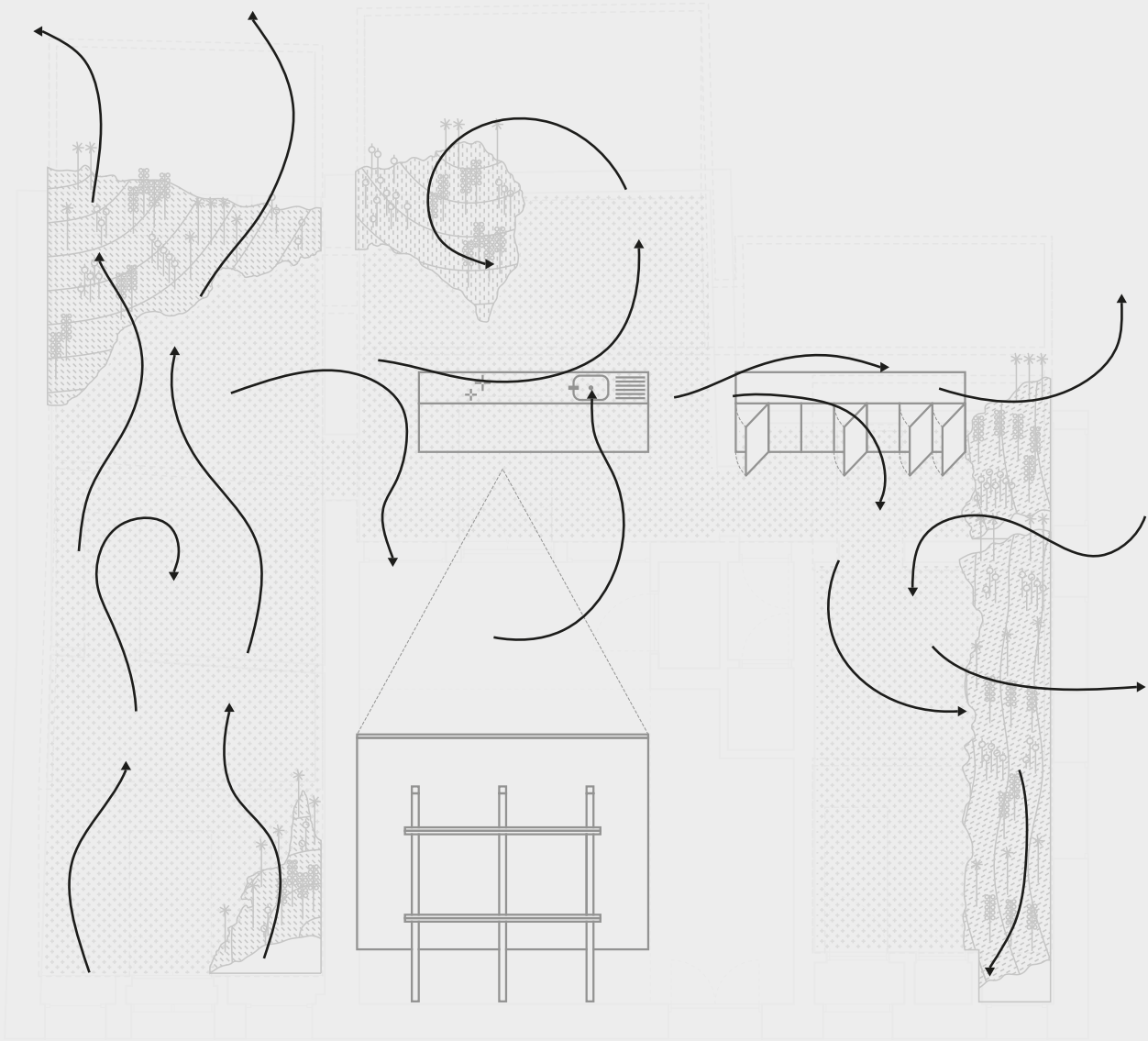
When an *exaptation* arises, it may not be perfectly suited for its new role. It may therefore develop new specific arrangements to promote its use in a better manner.

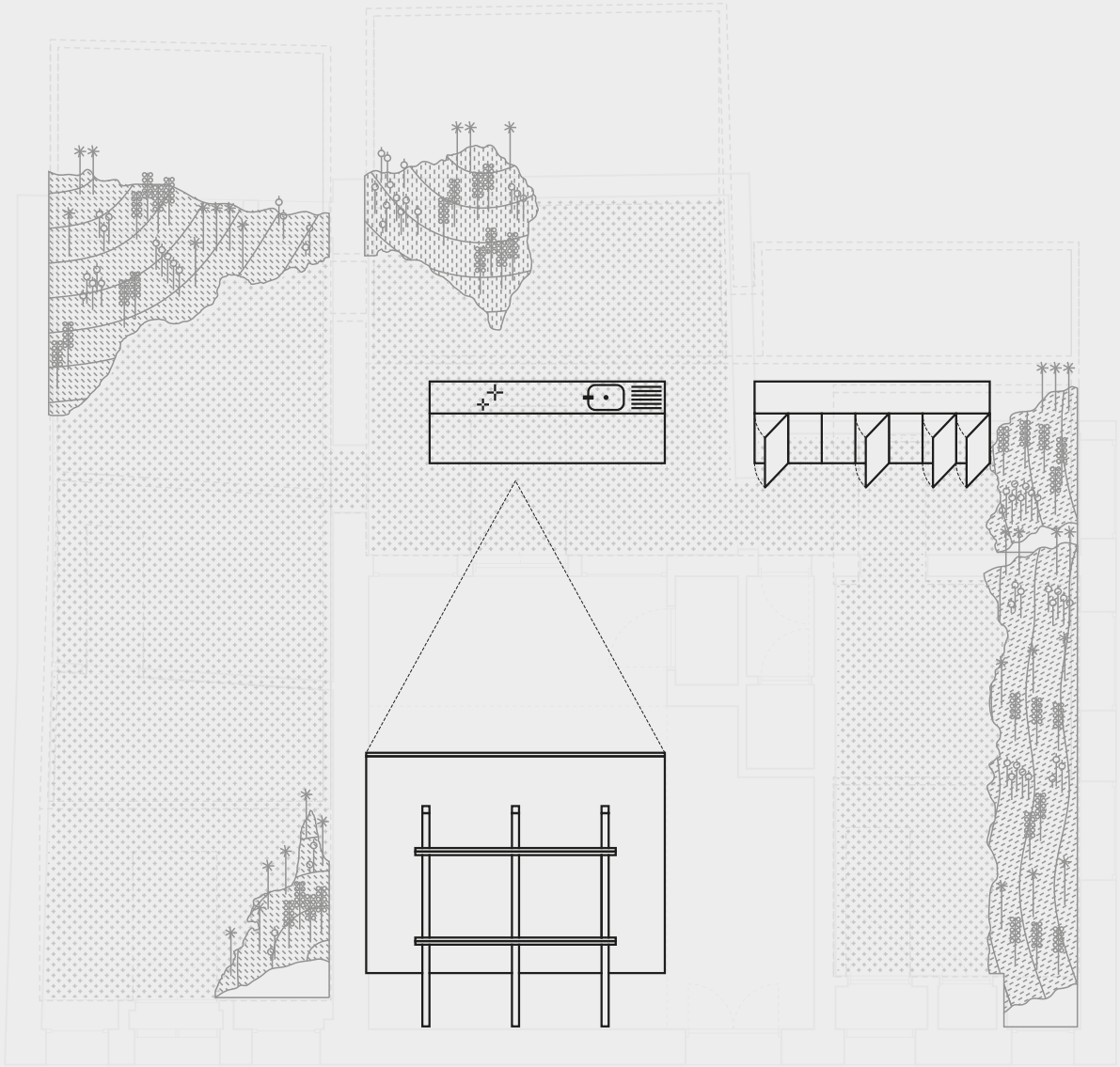
1. LIGHT - 2. SOUND - 3. AIR - 4. EQUIPMENT - 5. NATURE
6. GROUND - 7. DEMOLITION - 8. ORIGINS - 9. SCENARIO

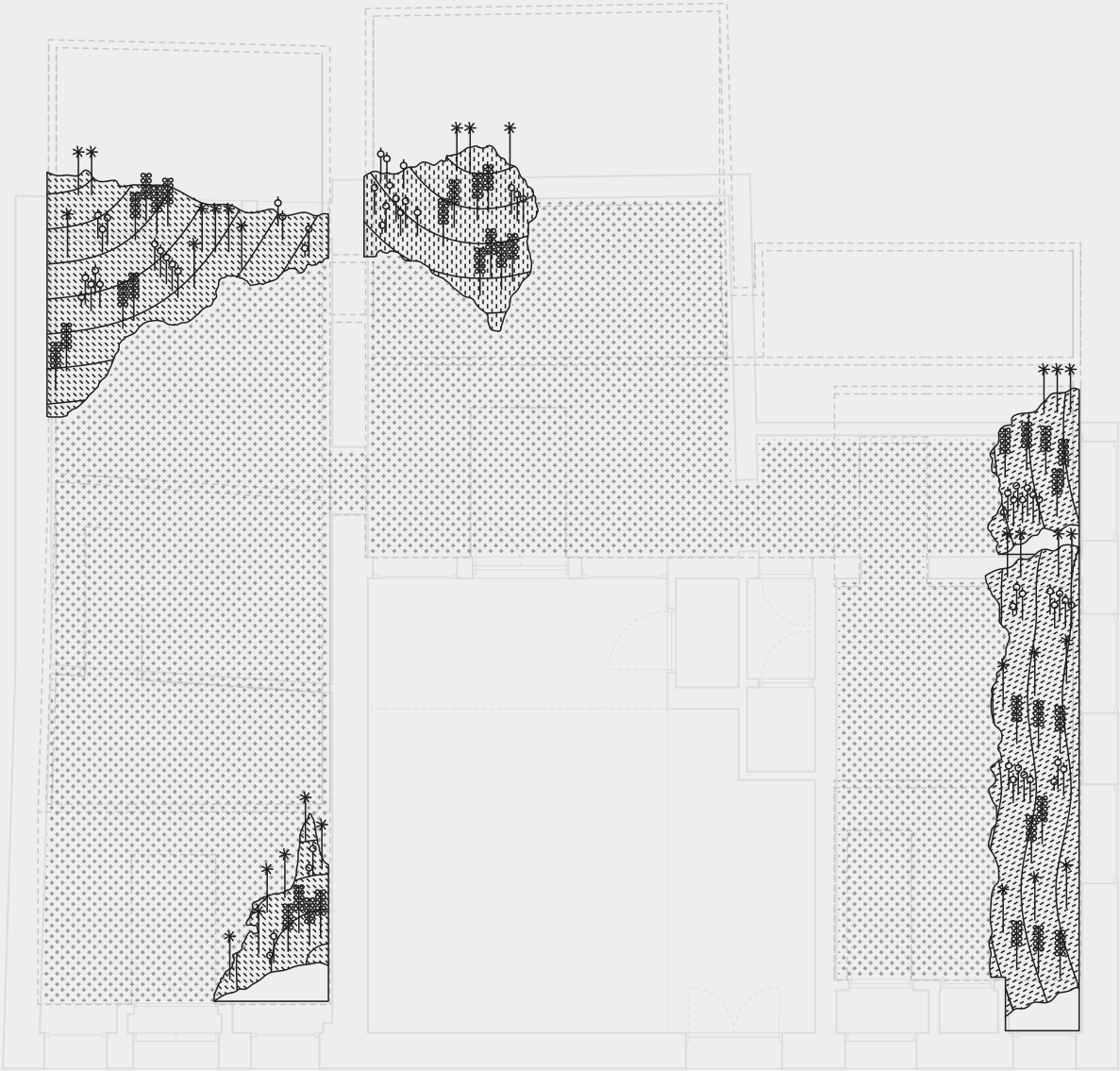
All drawings scale 1:100

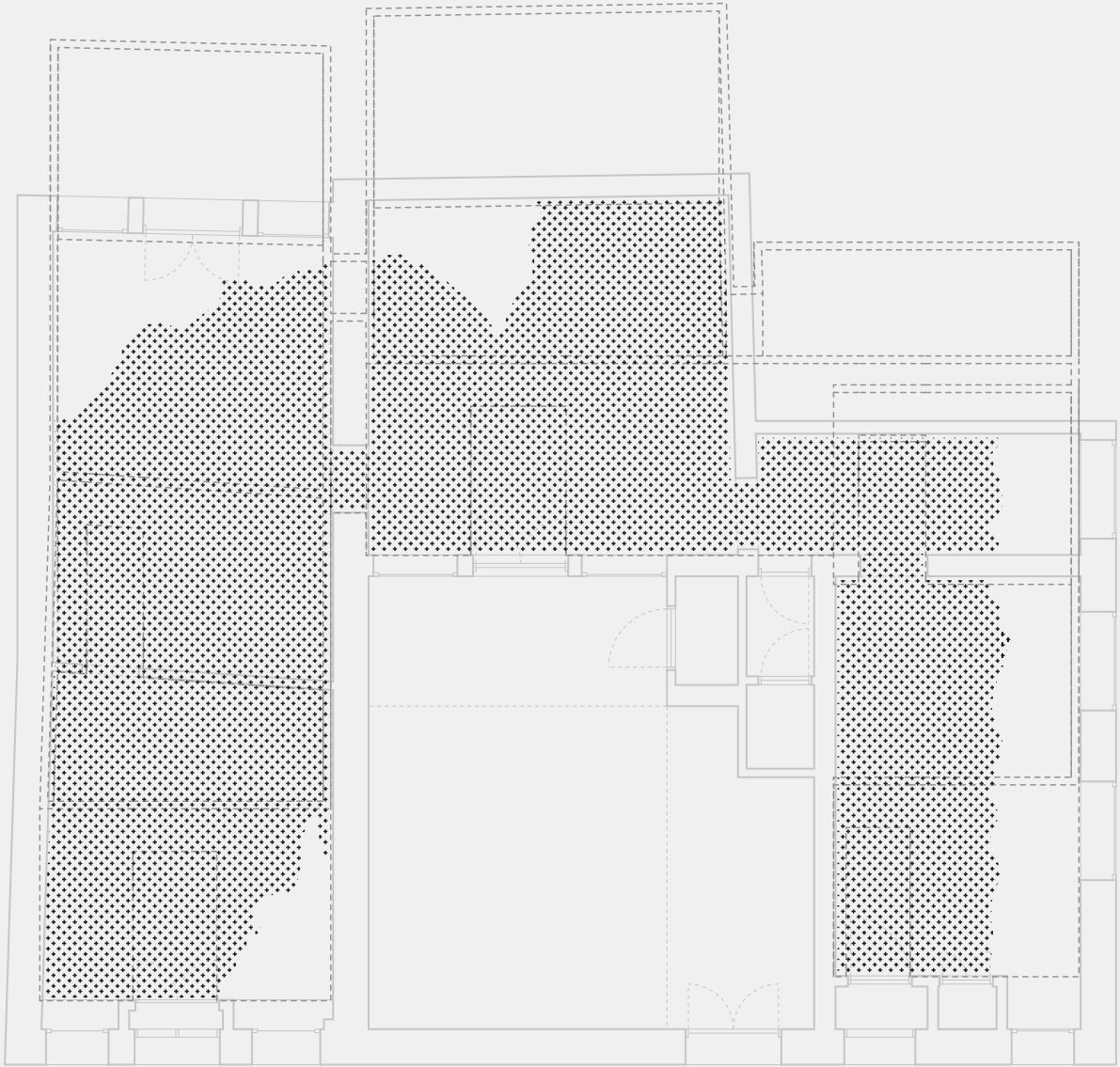


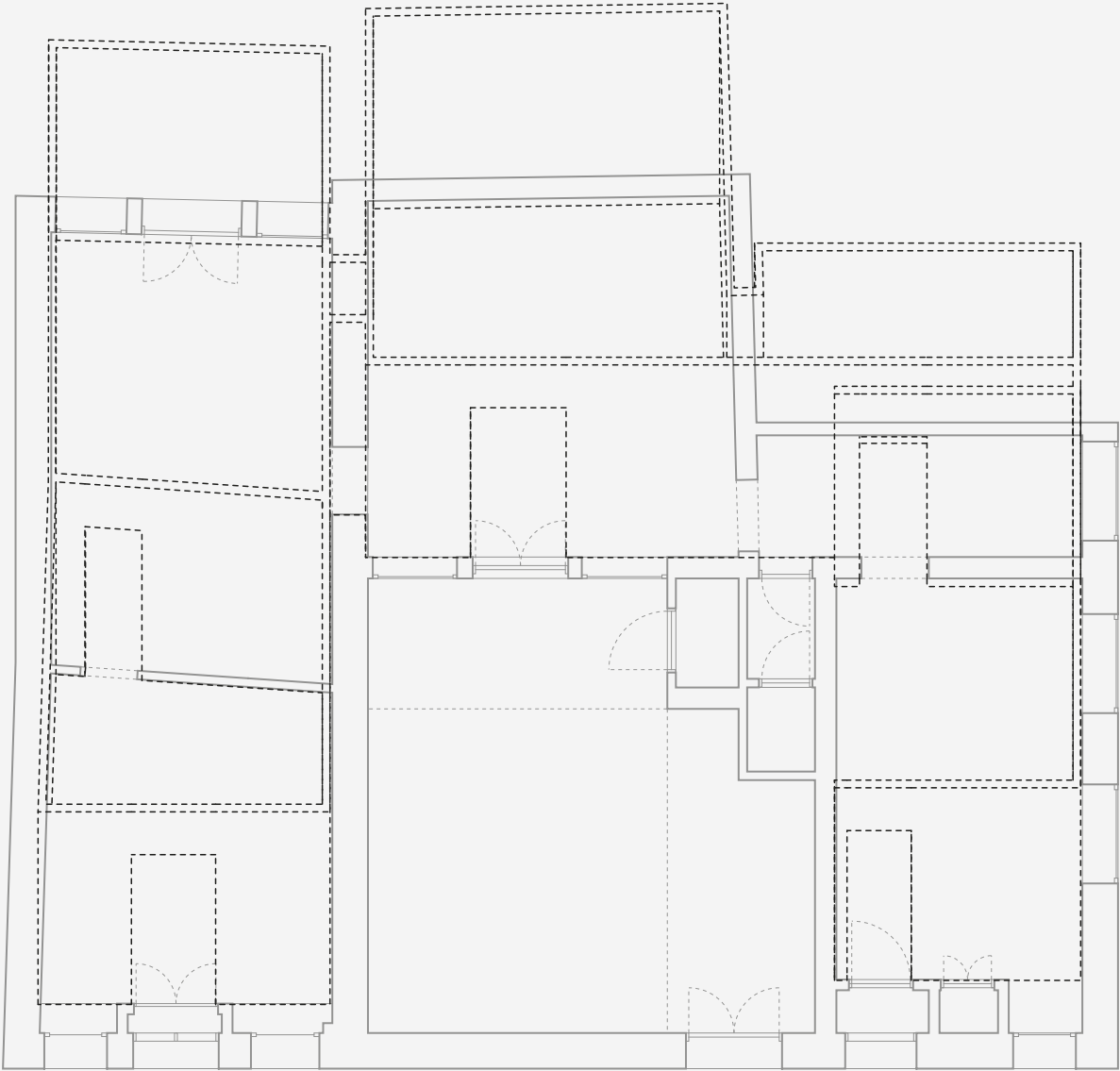


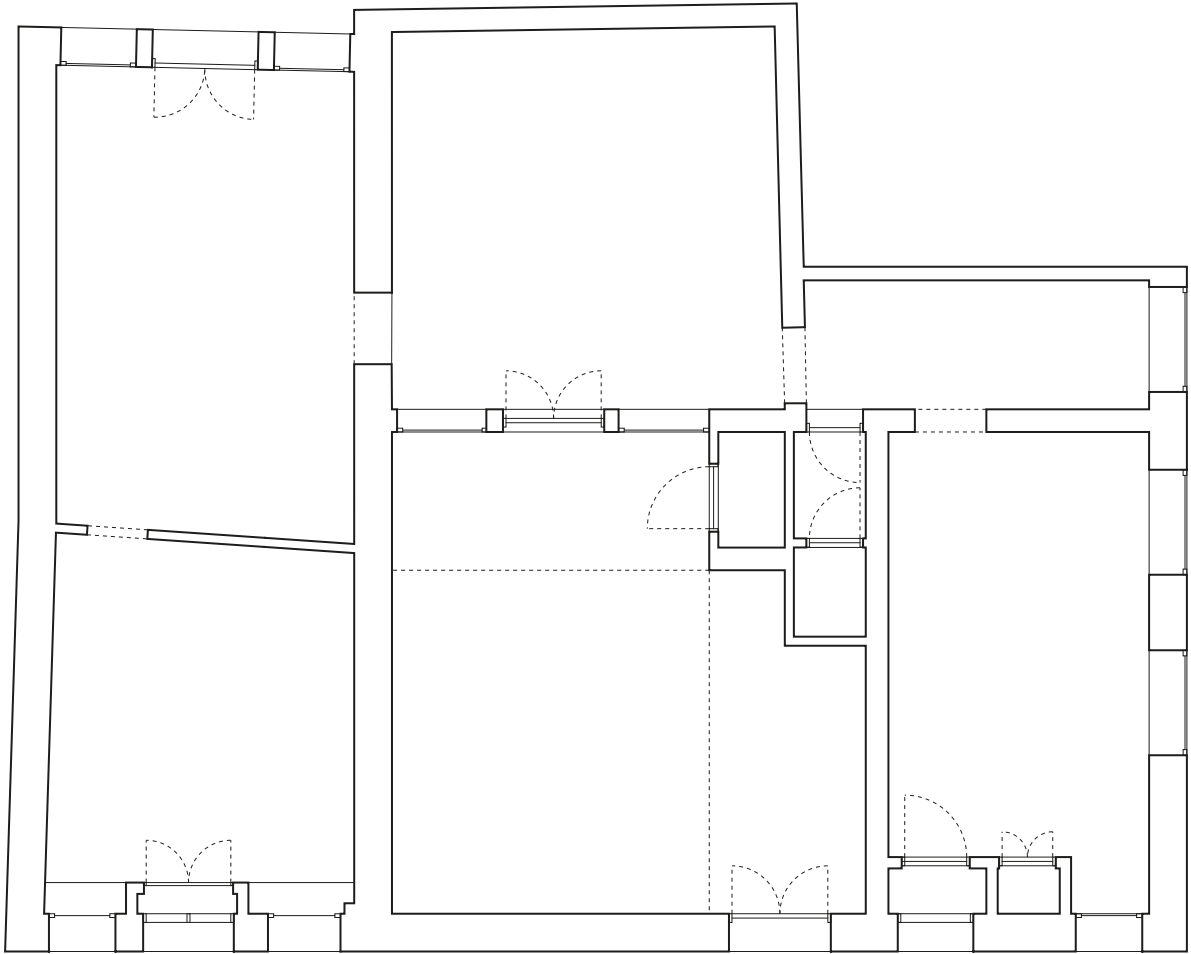














COSTS:

DEMOLITION

measure: m2 quantity: 63 unit.price: € 29,00
total:€ 1.827,00

GROUND

measure: m2 quantity: 80 unit.price: € 18,00
total:€ 1440,00

NATURE

measure: m2 quantity: 18 unit.price: € 57,00
total:€ 2.826,00

EQUIPMENT (KITCHEN)

measure: lump sum quantity: 1 unit.price: € 1.700,00
total:€ 1.700,00

EQUIPMENT (CABINET)

measure: lump sum quantity: 1 unit.price: € 300,00
total:€ 300,00

EQUIPMENT (VIDEO PROJECTION)

measure: lump sum quantity: 1 unit.price: € 1.200,00
total:€ 1.200,00

AIR

measure: m3 quantity: 245 unit.price: € 0,00
total:€ 0,00

SOUND

measure: lump sum quantity: 6 unit.price: € 250
total:€ 1.500,00

LIGHT

measure: lump sum quantity: 56 unit.price: € 25,00
total:€ 1.400,00

TRANSPORTATION AND WASTE DISPOSAL

measure: m3 quantity: 4 unit.price: € 130,00
total: € 520,00

TOTAL € 12.713,00

The remaining € 12.287,00 is left for travel expenses,
freight-forwarding, accomodations, production and
dissemination of research.