

Prelazak drumskih vozila na mjestima ukrštanja pruge i puta u istom nivou dozvoljen je jedino kada su podignuti polubranici, odnosno kada dozvoljava saobraćajna signalizacija.

Vozači drumskih vozila često ne poštuju saobraćajnu signalizaciju na putnim prelazima, zbog čega se događaju nesreće koje se mogu izbjeći.

Voz uvijek ima pravo prvenstva na putnom prelazu u odnosu na učesnike u drumskom saobraćaju.



The crossing of road vehicles at the intersection of the railway line and the road on the same level is only allowed when the half-barriers are raised, that is to say, when the traffic signals allow it.

Car drivers often do not respect traffic signals at level crossings, which is the reason for accidents that can be avoided, occur.

The train always has the right of way at the level crossing in relation to road traffic participants.

Zabranjeno je kretanje prugom i staničnim kolosjecima, kao i nedozvoljeni prelazak pruge i staničnih kolosjeka na nedozvoljenim mjestima. Pruga se prelazi samo na putnim, odnosno pješačkim prelazima, a stanični kolosjeci preko uređenih nadvožnjaka, pasarela i podzemnih prolaza.

Zaustavni put voza je 700 m i nijedna trenutna reakcija nije moguća.



It is forbidden to move along the railway line and station tracks, as well as to cross the railway line and station tracks in unauthorized places.

The railway line is crossed only at road or pedestrian crossings, and the station tracks are crossed over overpasses, footbridges and underground passages.

The stopping distance of the train is 700 m and no immediate reaction is possible.

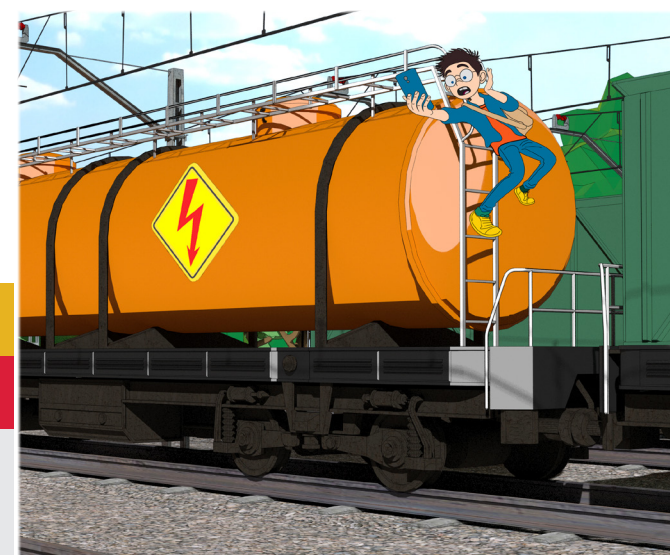
Zabranjen je izlazak putnika iz voza, odnosno ulazak putnika u voz, dok je voz u pokretu.

It is forbidden for passengers to leave the train, that is to say, for passengers to enter the train while the train is in motion.



Zabranjeno je penjanje i prelazak preko vagona, Napon u kontaktnom vodu je 25.000 V, a zona opasnosti je 2 m od djelova kontaktne mreže pod naponom.

Climbing and crossing the wagons is prohibited. The voltage of the Overhead Contact Line is 25,000 V, and the danger zone is 2 m from the parts of the Contact Network under voltage.



**Bezbjednost počinje
od tebe!**

**Safety starts
with you!**

Zabranjen prelazak preko žute linije koja označava granicu pri kretanju peronom.

It is forbidden to cross the yellow line that marks the border when moving along the platform.



Zbog nepažnje i grešaka vozača drumskih vozila, pješaka i putnika, u proteklih šest godina, (u periodu od 2018. do 2023. godine) dogodilo se 69 vanrednih događaja u željezničkom saobraćaju, u kojima je život izgubila 21 osoba, a povrijeđeno 14.

Due to the carelessness and mistakes of car drivers, pedestrians and passengers, in the past six years, (in the period from 2018 to 2023), 69 extraordinary events occurred in the railway traffic, in which 21 people lost their lives and 14 were injured.



Crna Gora
Uprava za željeznice

PROGRAM POVEĆANJA NIVOA
BEZBJEDNOSTI ŽELJEZNIČKOG
SAOBRAĆAJA KROZ PREVENCIJU
VANREDNIH DOGAĐAJA U KOJIMA
UČESTVUJU VOZAČI DRUMSKIH
VOZILA, PUTNICI I TREĆA LICA

PROGRAM TO INCREASE THE
SAFETY LEVEL OF RAILWAY TRAFFIC
THROUGH THE PREVENTION OF
INCIDENTS INVOLVING DRIVERS OF
ROAD VEHICLES, PASSENGERS AND
THIRD PARTIES

Budi odgovoran i poštuju zakon, jedan trenutak tvoje nepažnje može da ima strašne posljedice!

Be responsible and respect the law, one moment of your inattention can have dire consequences!

Bezbednost počinje od tebe!

Safety starts with you!