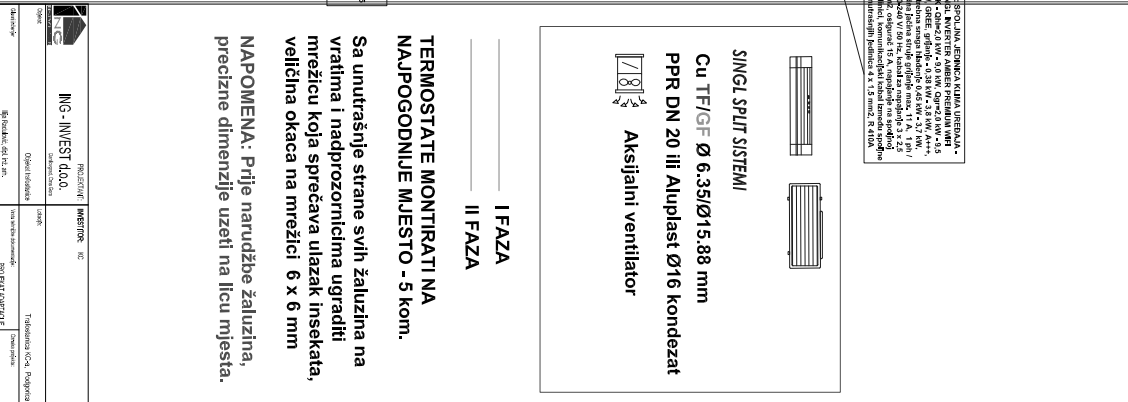


3. GRAFIČKA DOKUMENTACIJA



_____ I FAZA
_____ II FAZA

**TERMOSTATE MONTIRATI NA
NAJPOGODNIJE MJESTO - 5 kom.**

Sa unutrašnje strane svih žaluzina na vratima i nadprozorcima ugraditi mrežicu koja sprečava ulazak insekata, veličina okaca na mrežici 6 x 6 mm

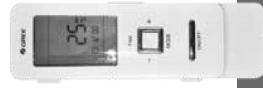
NAPOMENA: Prije narudžbe žaluzina, precizne dimenzije uzeti na licu mjesta

[illegible]

4. PRILOZI

AMBER

Premium Inverter WiFi klima



0,5W standby, PCB zaštita

Samodijagnostika

Turbo funkcija

Auto-restart

Tajmer

Kompaktan dizajn

Funkcija memorije

I feel funkcija

Inteligentno predgrevanje

Inteligentno odmrzavanje

Hladna plazma

Grejač poda optate

Tri noćna režima

Grejanje (-30°C)

Hlađenje (-18°C)

7 brzina ventilatora

Visoka energetska efikasnost

Tih režim rada

3D strujanje

PREMIUM INVERTER AMBER je visoko kvalitetan uređaj, koristi najsavremenije rashladno sredstvo freon R32, koje je 8% efikasnije od standardnog freona R410A, čime je osigurana smanjena potrošnja struje, a povećana efikasnost u radu, kao i 30% manji štetan uticaj na životnu sredinu. Dvostepeni kompresor sa patentirano 1Hz tehnologijom omogućava najpouzdanije i stabilno grejanje (do -30°C) i hlađenje (do +54°C). Ventilator sa 7 brzina omogućava maksimalan komfor i tih rad. Kompaktnog dizajna, sa integrisanim WiFi modulom i nevidljivim displejom u režimu mirovanja na ugrađenom panelu, lako se uklapa u svaki stambeni i poslovni ambijent.

Pripada energetske klasi (A+++/A++), što osigurava uštedu u potrošnji i manjim računima za struju.



GREE

GREJE | HLADI | ŠTITI | ŠTEDI



Vrhunski kvalitet po meri prirode

- Najnoviji freon R32 pruža uštedu od 8% u potrošnji i 30% manje šteti životnoj sredini
- 1Hz omogućava najpouzdanije grejanje pri -30°C i hlađenje na +54°C
- 7 brzina ventilatora obezbeđuje najviši komfor i tih rad
- 3D strujanje vazduha za veću prijatnost u prostoriji



Model	AMBER PREMIUM INVERTER WiFi 10K	AMBER PREMIUM INVERTER WiFi 12K	AMBER PREMIUM INVERTER WiFi 10K	AMBER PREMIUM INVERTER WiFi 12K	AMBER PREMIUM INVERTER WiFi 24K
Kapacitet	Hlađenje Grejanje	850 W - 5000 W 700 W - 5500 W	1200 W - 7200 W 880 W - 9200 W	1200 W - 7200 W 1200 W - 9200 W	2000 W - 9000 W 2000 W - 9500 W
Energetska efikasnost	Hlađenje Grejanje	A+++ (srednja zona) A+++ (topla zona)	A+++ (srednja zona) A+++ (topla zona)	A+++ (srednja zona) A+++ (topla zona)	A+++ (srednja zona) A+++ (topla zona)
Napajanje na spoljnoj jedinici	1 Ph, 220-240V, 50Hz	1 Ph, 220-240V, 50Hz	1 Ph, 220-240V, 50Hz	1 Ph, 220-240V, 50Hz	1 Ph, 220-240V, 50Hz
Tih napajanje kabla	3 X 1,5 mm2	3 X 1,5 mm2	3 X 2,5 mm2	3 X 2,5 mm2	3 X 2,5 mm2
Kabl međuveze	4 X 1,5 mm2	4 X 1,5 mm2	4 X 2,5 mm2	4 X 2,5 mm2	4 X 2,5 mm2
Ulazna snaga	Hlađenje Grejanje	550 (75-1800) W 745 (130-2400) W	840 (55-1900) W 980 (130-2600) W	1320 (350-3300) W 1320 (350-3300) W	1850 (450-3700) W 1750 (380-3800) W
Jedina struje	Hlađenje Odmrzavanje	3,52 A 4,63 A	5,10 A 3,70 A	5,90 A 3,90 A	11,00 A 10,70 A
Protok vazduha (m³/h)	800/720/570/620/560/500/450	800/730/650/630/580/530/430	1200/1150/1050/950/850/780/600	1200/1050/950/850/780/600	1200/1050/950/850/780/600
SEER	8,50	8,50	6,60	6,60	6,50
SCOP	5,10	5,10 (srednja) 5,70 (topla)	4,40 (srednja) 5,10 (topla)	4,40 (srednja) 5,10 (topla)	4,10 (srednja) 5,30 (topla)
Opseg radne temperature	-30°C - 54°C	-30°C - 54°C	-30°C - 54°C	-30°C - 54°C	-30°C - 54°C
UNITAŠNA JEDINICA					
Buka (zvuci) pritiska (dB(A))	43/41/38/36/33/31/18	46/43/41/39/36/34/31	48/45/43/40/37/35/33	48/45/43/40/37/35/33	50/46/43/41/39/37/35
Dimerizacija jedinice (ŠxVxD) (mm)	996-301x225	996-301x225	1101x327x249	1101x327x249	1101x327x249
Dimerizacija pakovanja (ŠxVxD) (mm)	1060x380x322	1060x380x322	1167x405x354	1167x405x354	1167x405x354
Masa (neto/hruto), kg	13/16	13,5 / 16,5	16,5 / 20	16,5 / 20	16,5 / 20
SPOLJAŠNA JEDINICA					
Buka (zvuci) pritiska (dB(A))	53	54	56	56	58
Čista faza	46/52 (9/8")	46/52 (9/8")	46/52 (9/8")	46/52 (9/8")	46/52 (9/8")
Čista faza	46 (1/4")	46 (1/4")	46 (1/4")	46 (1/4")	46 (1/4")
Max dužina/visina ceve instalacije (m)	15/10	40/20	40/20	40/20	50/20
Min dužina ceve instalacije (m)	3	3	3	3	3
Dopuna freonom ceve instalacije posle 5m po 1m (gr)	20	20	40	40	50
Vrsta freona	R 32	R 32	R 32	R 32	R 32
Dimerizacija jedinice (ŠxVxD) (mm)	889x596x378	889x596x378	980x790x427	980x790x427	980x790x427
Dimerizacija pakovanja (ŠxVxD) (mm)	948x420x645	948x420x645	1083x488x655	1083x488x655	1083x488x655
Razmak između nosača spoljne jedinice (mm)	560	560	610	610	610
Masa (neto/hruto) (kg)	44,5 / 47,5	45,5 / 48,5	62,5 / 67,5	62,5 / 67,5	65 / 70

ENERGYNET

AW 420 D4-2-EX AXIAL FAN ATEX

Item no. 5970

Document type: **Product card**
 Document date: **2019-06-12**
 Generated by: **Systemair Online Catalogue**

Description

- Certified according to ATEX
- Speed-controllable
- Integral PTC cold conductor
- Explosion proof

The AW - EX fans have speed controllable external rotor motors. The fans have a square plate for wall mounting and are painted in standard black. The casing and impeller is manufactured from sheet steel. To protect the motor from overheating, integral thermistors are fitted with external leads which must be connected to the U-EK230E motor protection relay.

The AW-Ex fan motor is approved according to ATEX. Useful for Zone 1 and 2, groups IIA, IIB and temperature class T1, T2, or T3 (AW 355 and AW 420 also T4). Ignition protection "e".
 Accessories for Ex-fans only on request.



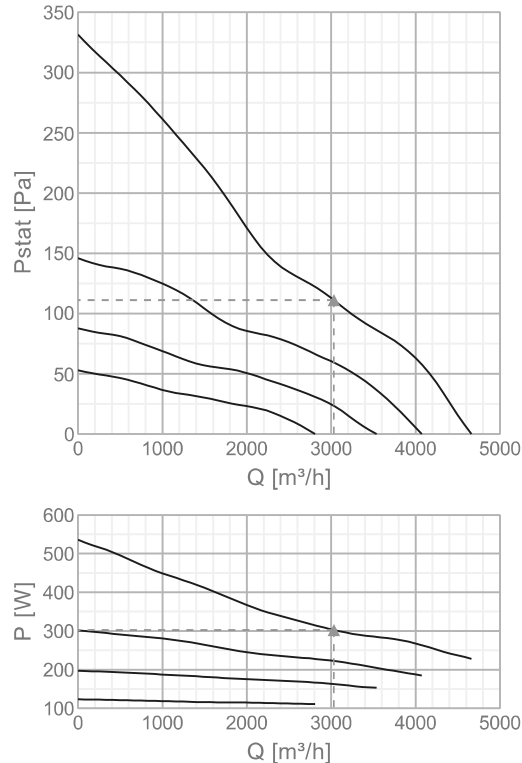
Technical parameters

Nominal data		
Voltage	400	V
Frequency	50	Hz
Phase	3	~
Input power (P1)	536	W
Current	0,943	A
Max. airflow	4662	m³/h
Fan impeller speed	1269	r.p.m.
Weight	11,8	kg
Temperature data		
Temperature range, ambient and duct	-20-40	°C
Sound data		
Sound pressure level at 3 m (20m² Sabin)	69,2	dB(A)
Protection / Classification		
Insulation class	F	
Enclosure class, motor	IP44	
Certificate	ZELM 05ATEX0279X	
Explosion proof	II 2G c Ex e IIB T4	

Default group		
Max. temperature of transported air	40	°C
Max. temperature of transported air when voltage-controlled	40	°C

Performance

Diagrams



Max efficiency

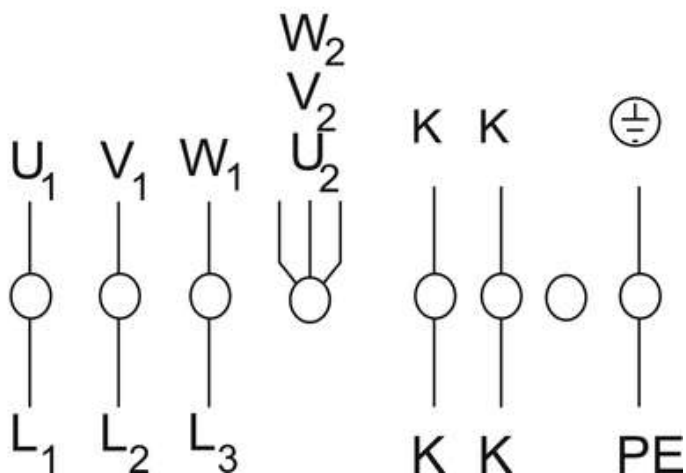
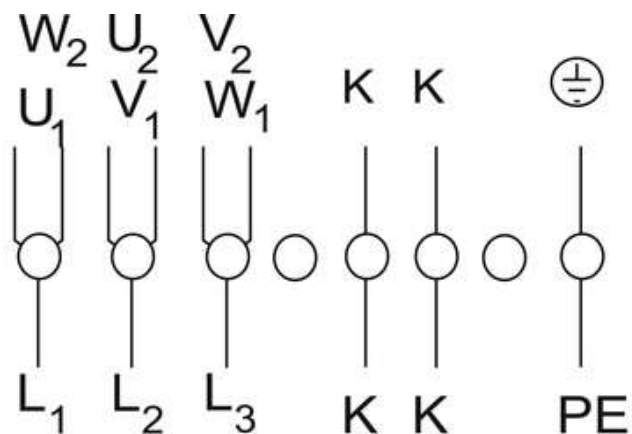
Hydraulic data										
▲ Working air flow	3031 m³/h									
▲ Working static pressure	111 Pa									
▲ Power	302 W									
Speed	1394 r.p.m.									
Current	0,623 A									
SFP	0,359 kW/(m³/s)									
Voltage	400 V									
Sound power level	63	125	250	500	1k	2k	4k	8k	Tot	
Inlet	dB(A)									
	-	-	-	-	-	-	-	-	-	-

Wiring

Delta connection



Star connection

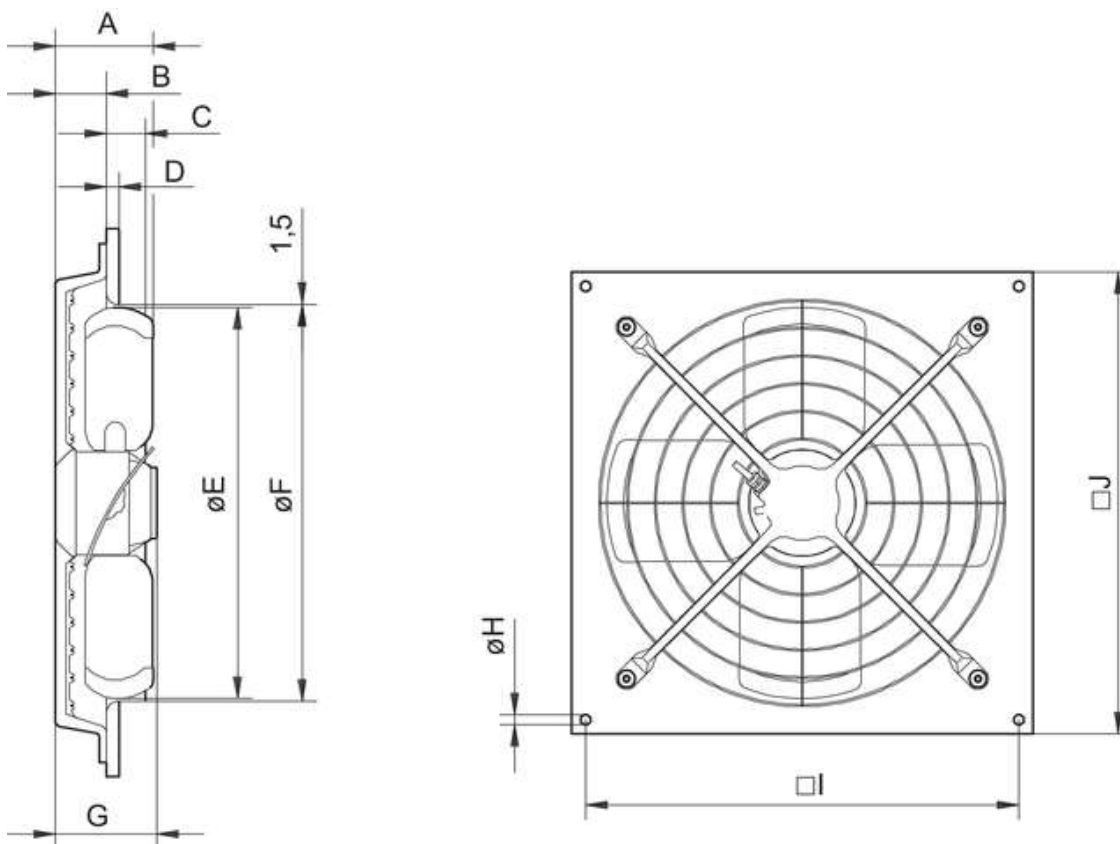


3~ motor, 2 speeds (D/Y switch over) with temperature sensor.
Without bridge when using speed change over switch.

U1 brown
V1 blue
W1 black
U2 red
V2 grey
W2 orange
K white
PE green/yellow

Test-voltage on temperature sensor max. 2,5V.

Dimensions



	A	B	C	D	ØE	ØF	G	ØH	I	J
AW 420 EX	138	71	70	16	419	426	125	14,5	460	503

Accessories

Electric accessories

[RTRD 2 Speed Cont. Systemair \(5941\)](#)

[Ex e-Terminal box 1,5/6mm² 32A \(2704\)](#)

[Trigger unit U-EK230E \(30199\)](#)

[REV-5POL/07 ON/OFF \(33980\)](#)

[REV-9POL/12 ON/OFF \(33981\)](#)

[REV-3POL ATEX 11kW-25A ON/OFF \(36414\)](#)

Documentation

[imo_ATEX_171009_de,en,se,ru,pl_005_312435_web.pdf \(6,09MB\)](#)

[1.Supp_Zelm 05 ATEX 0279X_en.pdf \(250,36kB\)](#)

[Zelm_05_ATEX0279.pdf \(314,28kB\)](#)

[ec-dec_atex_181119_de,en,se,ru,pl_007_314830.pdf \(1,18MB\)](#)

Specification text

The box is made out of electroplated steel plate, powder- coated. Including protection guard. The installation is possible in each fitting position. The fan has an axial impeller with airfoils made out of electroplated, powder- coated steel plate. The actuation is carried out by an explosion- proofed, speed- controllable external rotor motor with completed barretter. A D/Y- capability of connection allows an double- rotation operation of the motor. For annealing the motor is situated inside the air flow. Impeller according to VDI 2060, quality class Q 6,3 and dynamically weigh heavy in two levels. Tested according to ATEX- Guideline 94-9-EG. For the extraction of potentially explosive atmosphere of zone 1, category 2G and zone 2, category 3G. The fans are in zone 1, 2 and for the temperature levels T1, T2 and T3 applicable. The explosion group is "e" elevated safety Eexe II, T3. Appurtenances for the Ex- fan is available on enquiry.

AW 355 D4-2-EX AXIAL FAN ATEX

Item no. 5969

Document type: **Product card**
 Document date: **2019-06-15**
 Generated by: **Systemair Online Catalogue**

Description

- Certified according to ATEX
- Speed-controllable
- Integral thermal contact
- Explosion proof

The AW - EX fans have speed controllable external rotor motors. The fans have a square plate for wall mounting and are painted in standard black. The casing and impeller is manufactured from sheet steel. To protect the motor from overheating, integral thermistors are fitted with external leads which must be connected to the U-EK230E motor protection relay.

The AW-Ex fan motor is approved according to ATEX. Useful for Zone 1 and 2; temperature class T1, T2, or T3. Ignition protection "e".
 Accessories for Ex-fans only on request.



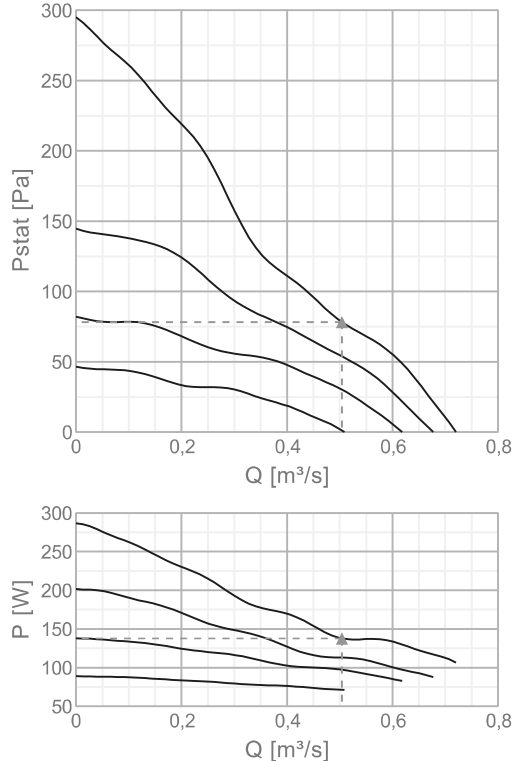
Technical parameters

Nominal data		
Voltage	400	V
Frequency	50	Hz
Phase	3	~
Input power (P1)	286	W
Current	0,493	A
Max. airflow	0,72	m³/s
R.p.m.	1341	r.p.m.
Weight	9	kg
Temperature data		
Temperature range, ambient and duct	-20-40	°C
Sound data		
Sound pressure level at 3 m	61,7	dB(A)
Protection / Classification		
Insulation class	F	
Enclosure class, motor	IP44	
Certificate	ZELM 05ATEX0279X	
Explosion proof	II 2G c Ex e IIB T4	

Default group		
Max. temperature of transported air	40	°C
Max. temperature of transported air when speed-controlled	40	°C

Diagrams

Diagrams

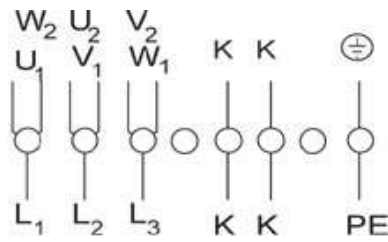


Max efficiency

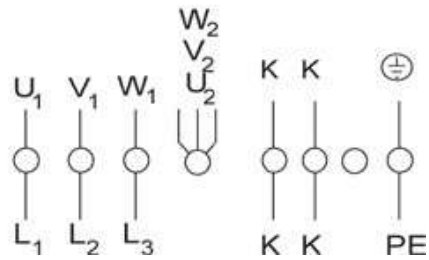
Hydraulic data										
▲ Working air flow	0,504 m³/s									
▲ Working static pressure	78,2 Pa									
▲ Power	138 W									
Speed	1437 r.p.m.									
Current	0,314 A									
SFP	0,273 W/(l/s)									
Voltage	400 V									
Sound power level		63	125	250	500	1k	2k	4k	8k	Tot
Inlet	dB(A)	38	52	64	60	64	62	56	49	69

Wiring

Delta connection



Star connection

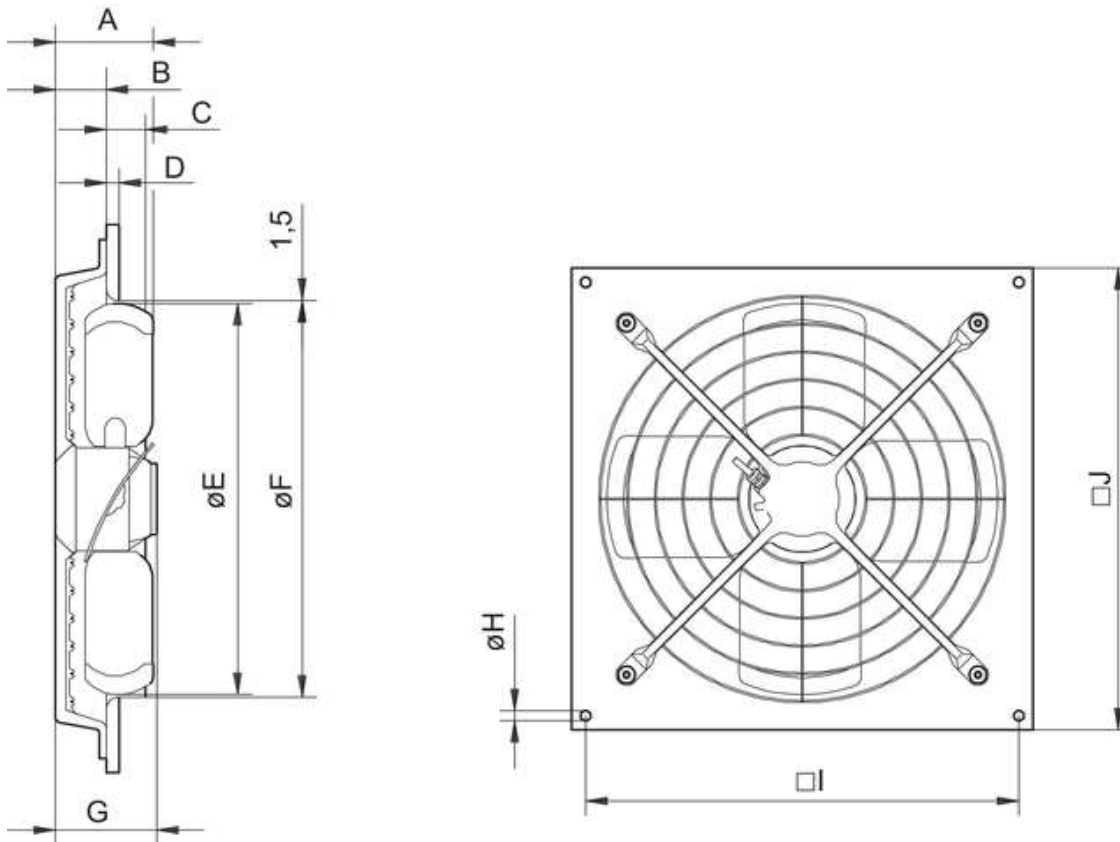


3~ motor, 2 speeds (D/Y switch over) with temperature sensor.
Without bridge when using speed change over switch.

U1 brown
V1 blue
W1 black
U2 red
V2 grey
W2 orange
K white
PE green/yellow

Test-voltage on temperature sensor max. 2,5V.

Dimensions



	A	B	C	D	E	F	G	H	I	J
AW 355 EX	138	48	70	16	350.5	356	125	4x12	385	423

Accessories

Electric accessories

[RTRD 2 Speed Cont. Systemair \(5941\)](#)

[RTRDU 2 Speed contr. Systemair \(5945\)](#)

[Trigger unit U-EK230E \(30199\)](#)

[REV-5POL/07 ON/OFF \(33980\)](#)

[REV-9POL/12 ON/OFF \(33981\)](#)

[REV-3POL ATEX 11kW-25A ON/OFF \(36414\)](#)

Documentation

[imo_ATEX_171009_de,en,se,ru,pl_005_312435_web.pdf \(6,09MB\)](#)

[Zelm_05_ATEX0279.pdf \(314,28kB\)](#)

[1.Supp_Zelm 05 ATEX 0279X_en.pdf \(250,36kB\)](#)

[ec-dec_atex_181119_de,en,se,ru,pl_007_314830.pdf \(1,18MB\)](#)

Specification text

The box is made out of electroplated steel plate, powder- coated. Including protection guard. The installation is possible in each fitting position. The fan has an axial impeller with airfoils made out of electroplated, powder- coated steel plate. The actuation is carried out by an explosion- proofed, speed- controllable external rotor motor with completed barretter. A D/Y- capability of connection allows an double- rotation operation of the motor. For annealing the motor is situated inside the air flow. Impeller according to VDI 2060, quality class Q 6,3 and dynamically weigh heavy in two levels. Tested according to ATEX- Guideline 94-9-EG. For the extraction of potentially explosive atmosphere of zone 1, category 2G and zone 2, category 3G. The fans are in zone 1, 2 and for the temperature levels T1, T2 and T3 applicable. The explosion group is "e" elevated safety Eexe II, T3. Appurtenances for the Ex- fan is available on enquiry.



AW-EX

- In accordance with ATEX directive 94-9 EC
- Speed-controllable
- Motor protection via cold conductor

The AW-EX fans have speed controllable external rotor motors. The fans have a square plate for wall mounting and are painted in standard black. The casing and impeller is manufactured from sheet steel. To protect the motor from overheating, cold conductors are fitted with external leads which must be connected to the U-EK230E EX motor protection relay.

The AW-Ex fan motor is approved according to ATEX. Improved safety in accordance with Ex e IIB T3 or T4.

Accessories for Ex-fans only on request.

ELECTRICAL ACCESSORIES



U-EK 230E EX
p. 338



R-DK4 KT
p. 323



RTRD p. 321

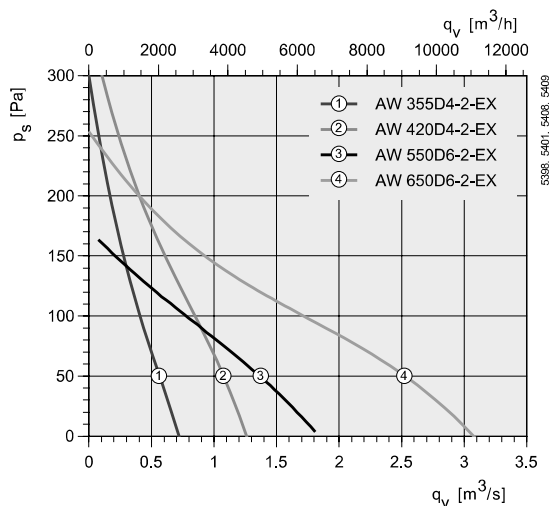


RTRDU p. 321



Ex e-Terminal
box 32A
p. 339

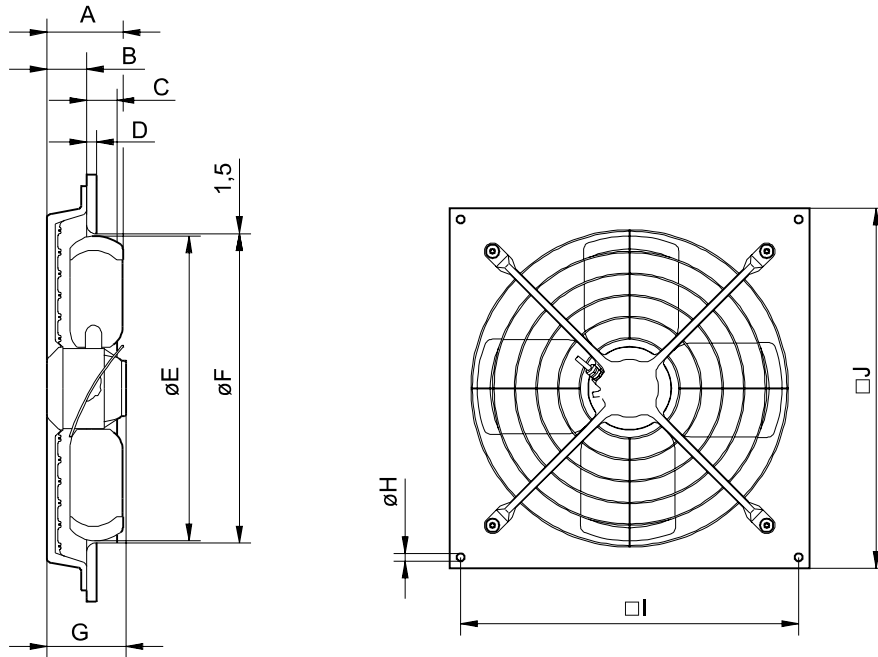
QUICK SELECTION



TECHNICAL DATA

AW		355 D4-2-EX	420 D4-2-EX	550 D6-2-EX	650 D6-2-EX
Art no		5969	5970	5971	5972
Voltage/Frequency	V/50 Hz	400 3~	400 3~	400 3~	400 3~
Power	W	286	536	579	1077
Current	A	0.27	0.943	1.15	1.78
Max air flow	m^3/s	0.694	1.23	1.84	3.04
R.p.m.	min^{-1}	1420	1269	697	790
Max temp. of transported air	°C	40	40	40	40
" when speed controlled	°C	40	40	40	40
Sound pressure level at 3 m	dB(A)	62	69	67	72
Weight	kg	9	10	13	20
Insulation class, motor		F	F	F	F
Enclosure class, motor		IP 44	IP 44	IP 44	IP 44
Motor protection		U-EK230E EX	U-EK230E EX	U-EK230E EX	U-EK230E EX
Certificate		ZELM 05 ATEX0279X	ZELM 05 ATEX0279X	ZELM 05 ATEX0279X	ZELM 05 ATEX0279X
Speed control, five step	Transformer	RTRD 2*	RTRD 2*	RTRD 2*	RTRD 2*
Speed control, five step high/low	Transformer	RTRDU 2*	RTRDU 2*	RTRDU 2*	RTRDU 2*
Wiring diagram p. 391-400		19	19	19	19
* + U-EK230E EX					

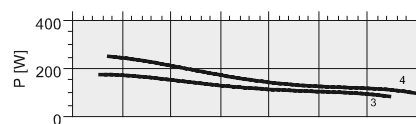
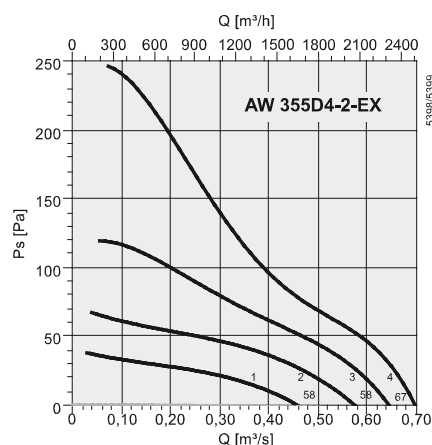
DIMENSIONS



AW	A	B	C	D	øE	øF	G	øH	I	J
355 D4-2-EX	138	48	70	16	350.5	356	125	12	385	423
420 D4-2-EX	138	71	70	16	419	426	125	14.5	460	503
550 D6-2-EX	138	72	55	18	551	558	143	14.5	610	650
650 D6-2-EX	162	66	78	18	651	658	161	14.5	730	770

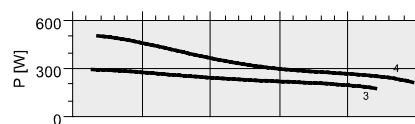
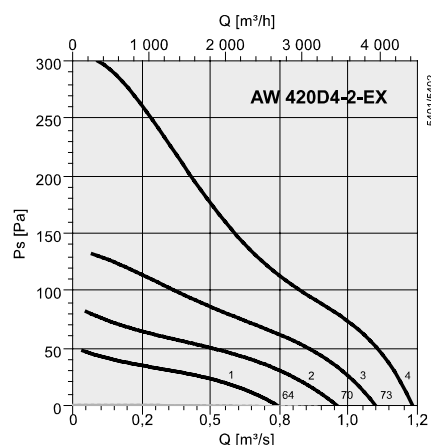
Explosion proof plate axial fans

PERFORMANCE



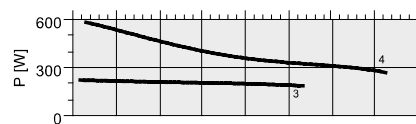
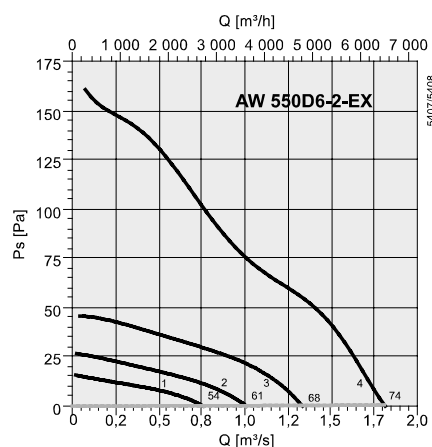
dB(A)	Tot	Frequency bands [Hz]							
		63	125	250	500	1k	2k	4k	8k
L_{WA} Inlet	69	36	56	61	60	64	62	55	46
L_{WA} Outlet	69	36	56	61	60	64	62	55	46

Measurement point: 0,47 m³/s; 76 Pa



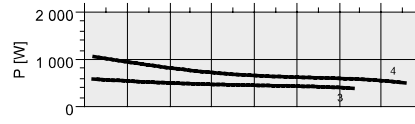
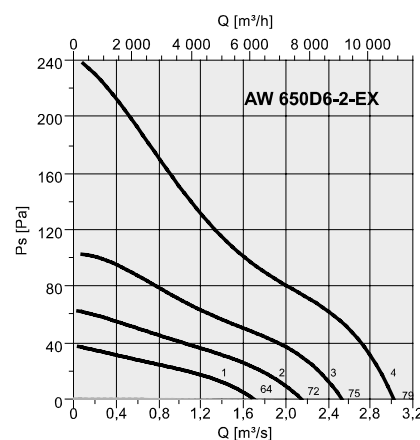
dB(A)	Tot	Frequency bands [Hz]							
		63	125	250	500	1k	2k	4k	8k
L_{WA} Inlet	76	43	64	68	69	71	70	63	54
L_{WA} Outlet	76	43	64	68	69	71	70	63	54

Measurement point: 0,84 m³/s; 96 Pa



dB(A)	Tot	Frequency bands [Hz]							
		63	125	250	500	1k	2k	4k	8k
L_{WA} Inlet	74	58	59	66	66	71	67	59	50
L_{WA} Outlet	74	58	59	66	66	71	67	59	50

Measurement point: 1,32 m³/s; 56 Pa



dB(A)	Tot	Frequency bands [Hz]							
		63	125	250	500	1k	2k	4k	8k
L_{WA} Inlet	79	63	66	69	72	74	73	64	57
L_{WA} Outlet	79	63	66	69	72	74	73	64	57

Measurement point: 2,2 m³/s; 73 Pa

