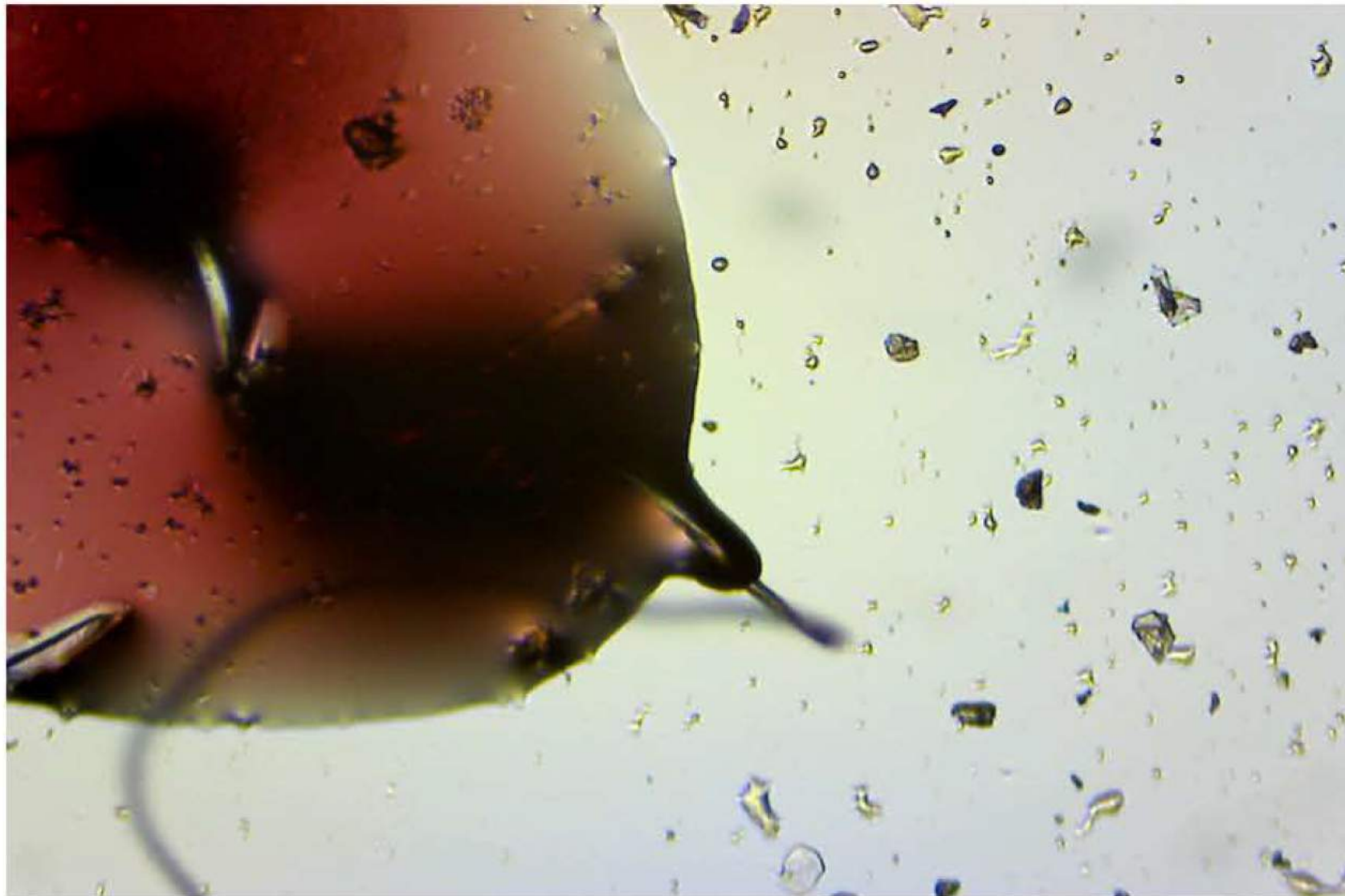


THE UNEXPECTED VOID

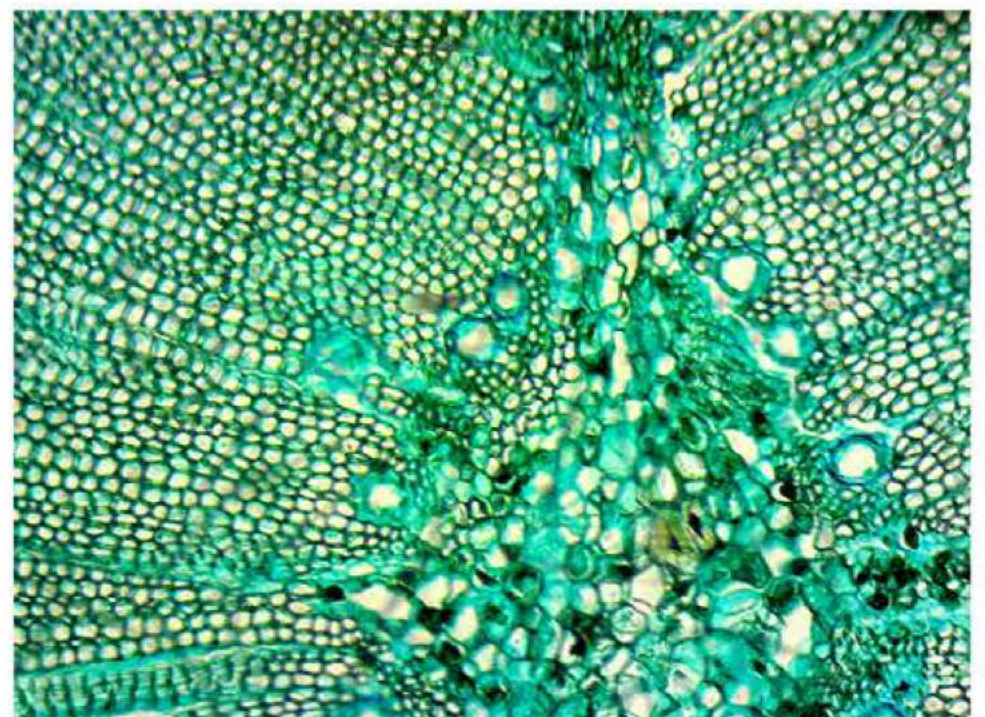
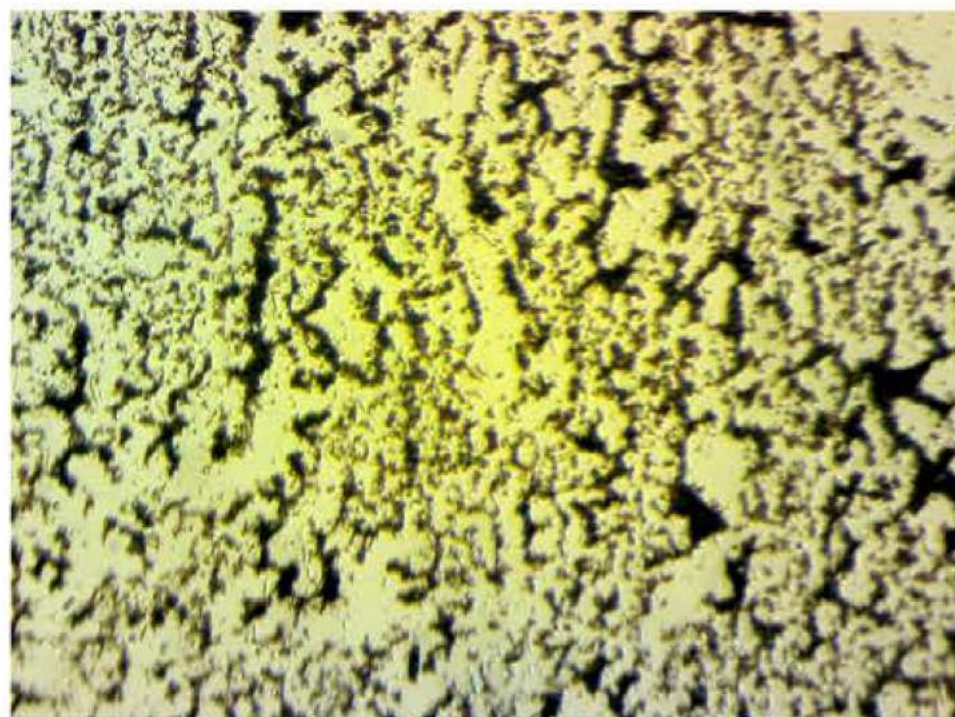
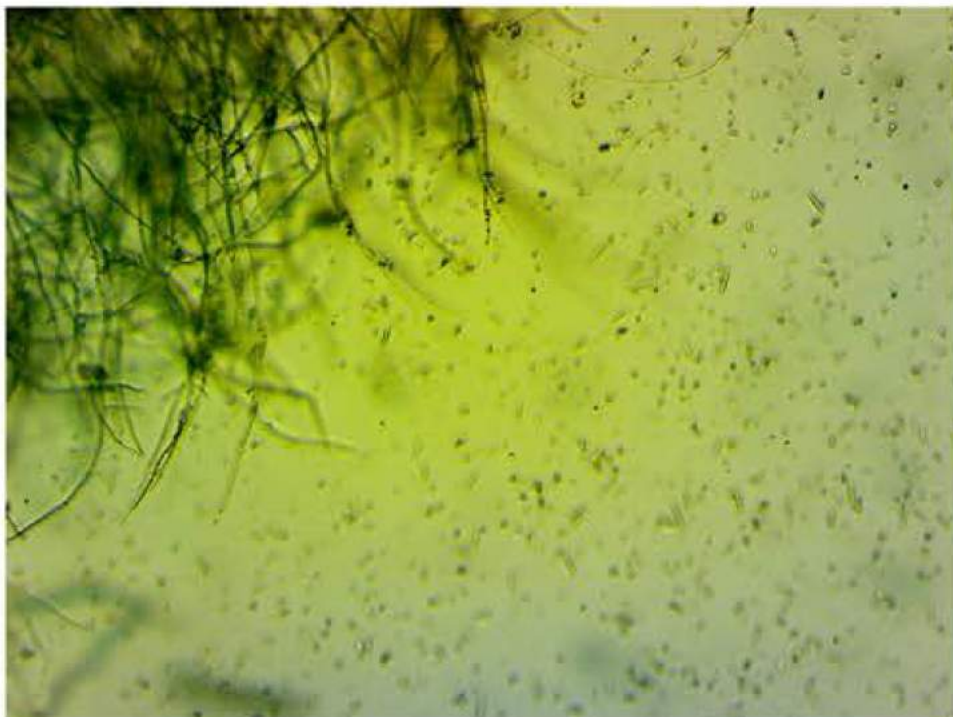
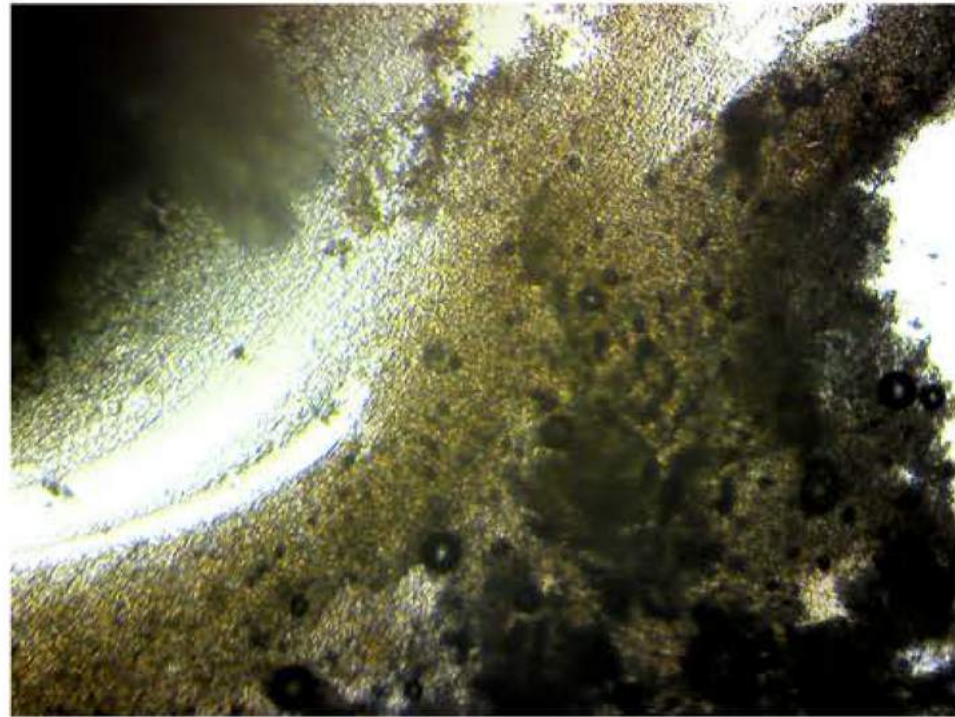
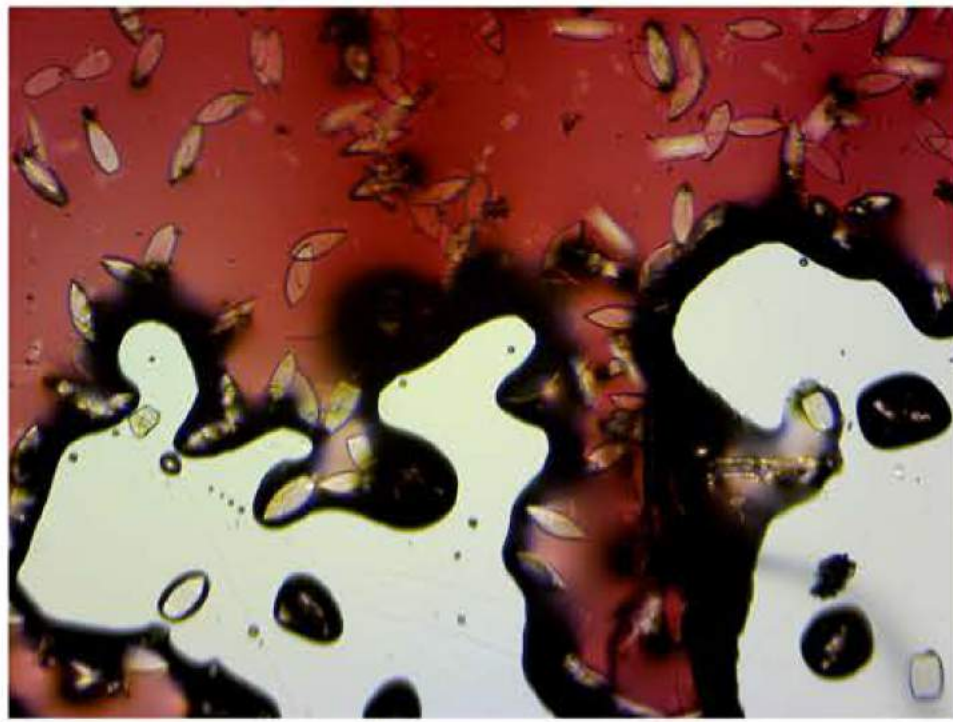


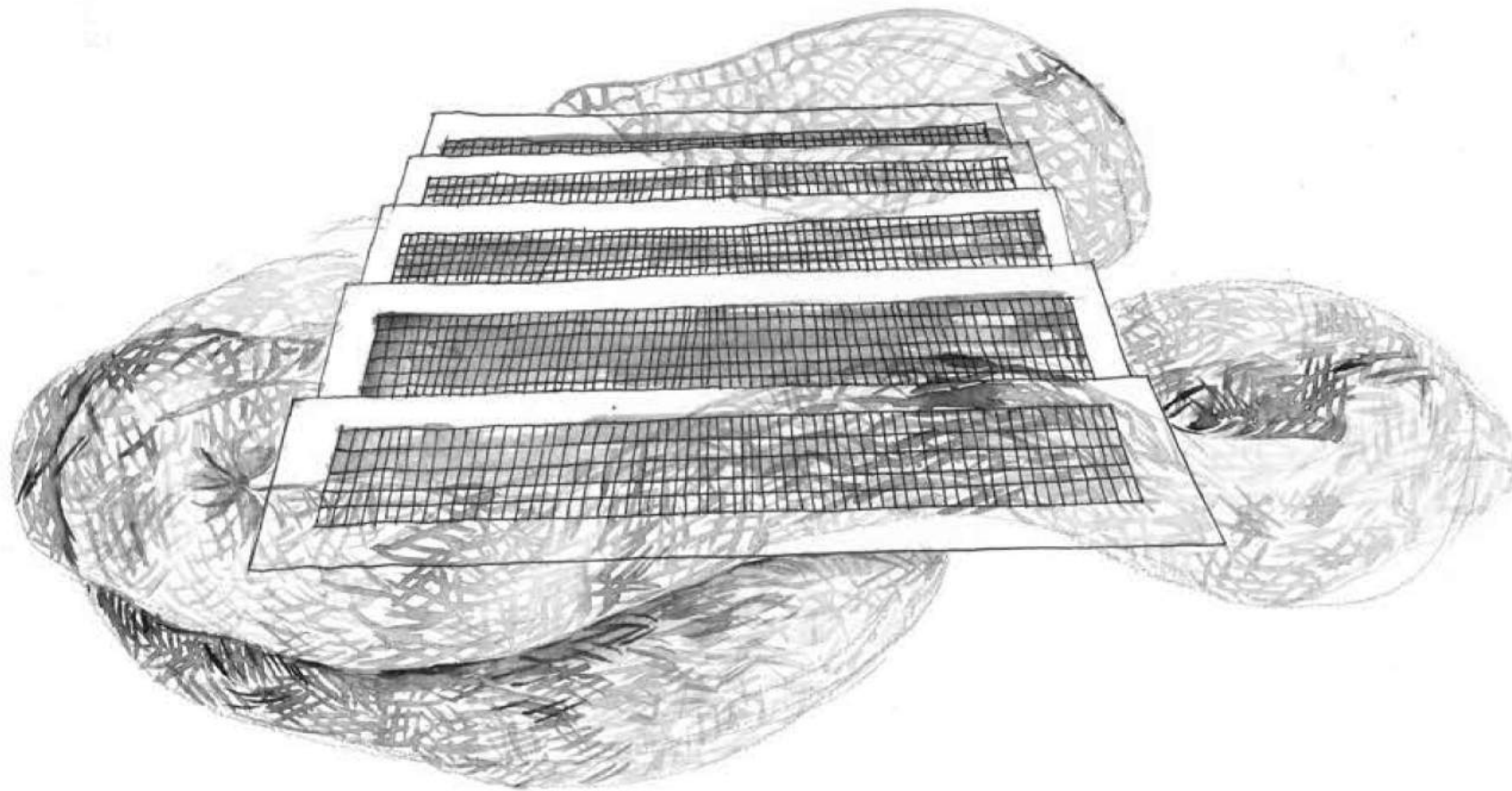
MICROSCOPE RESEARCH

/ Beginning of master project

/ Prague / Czech Republic

/ Research through the microworld, which gave me interesting insight of the hidden structures, colors, patterns, shapes and spaces, with which I created further steps of the master project



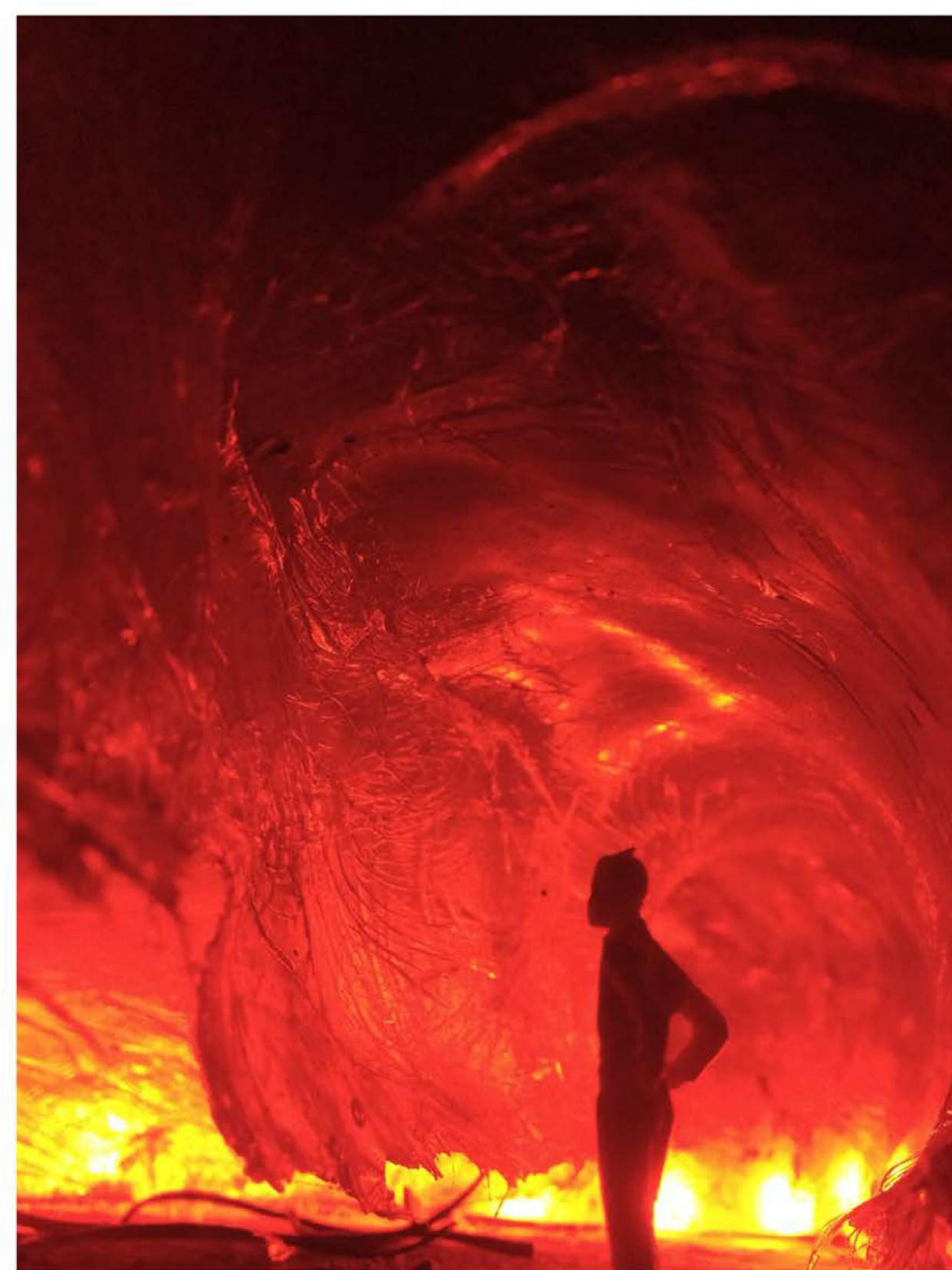


Parasitic Membrane

- / Handmade
- / Imitating 3D printing of space
- / located in Prague / Czech Republic

- / Abandoned industrial complexes in Czech Republic
- / Revitalizing
- / Analyzing the structure
- / Finding weak spots
- / Making a scheme from those spots
- / Following that path with a membrane, which becomes kind of a pavilion, a gallery space within the space, which supports the old structure and preserves it

THE UNEXPECTED VOID

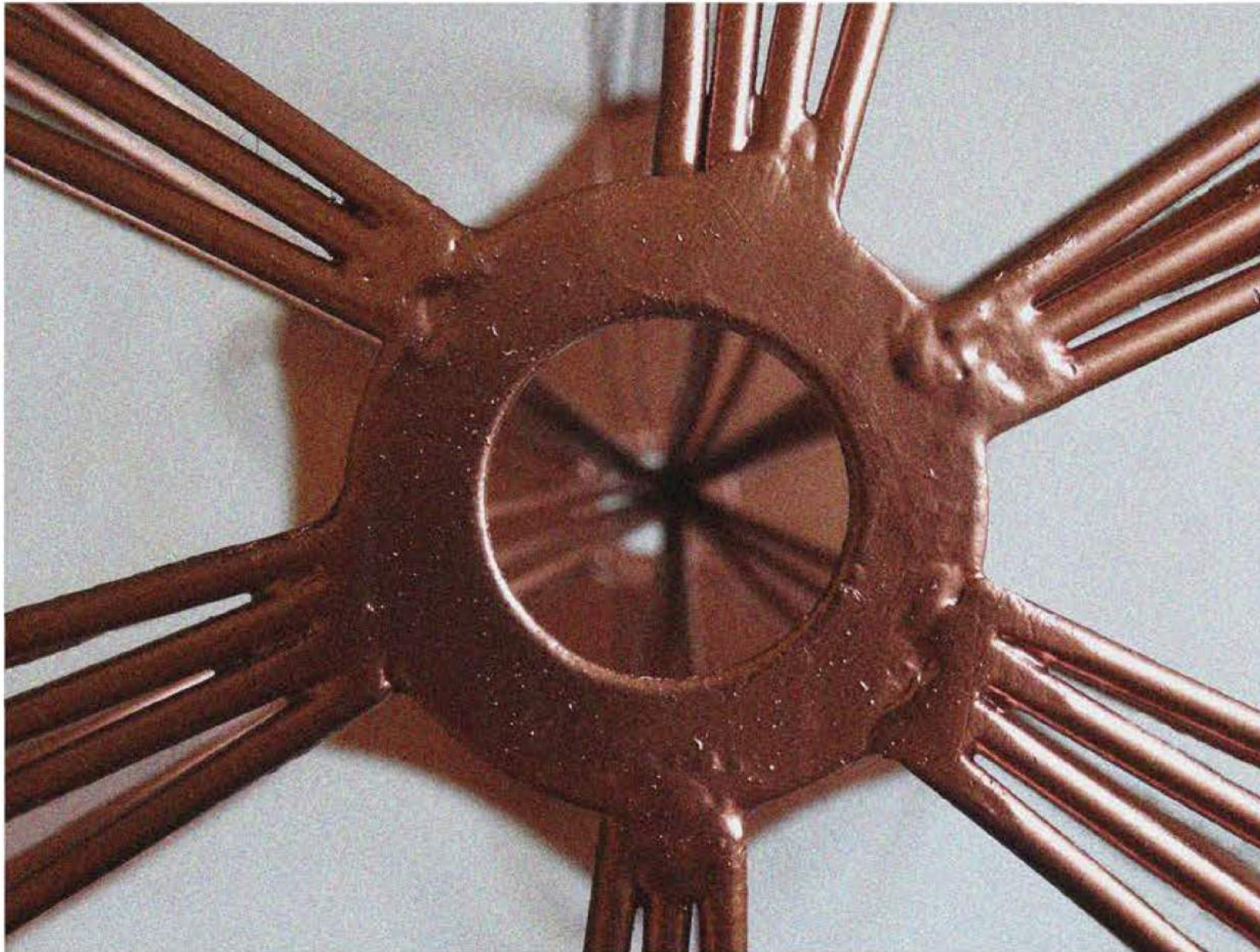


THE UNEXPECTED VOID



THE UNEXPECTED VOID





A POINT OF CREATION

/ sculpture

/ part of master project

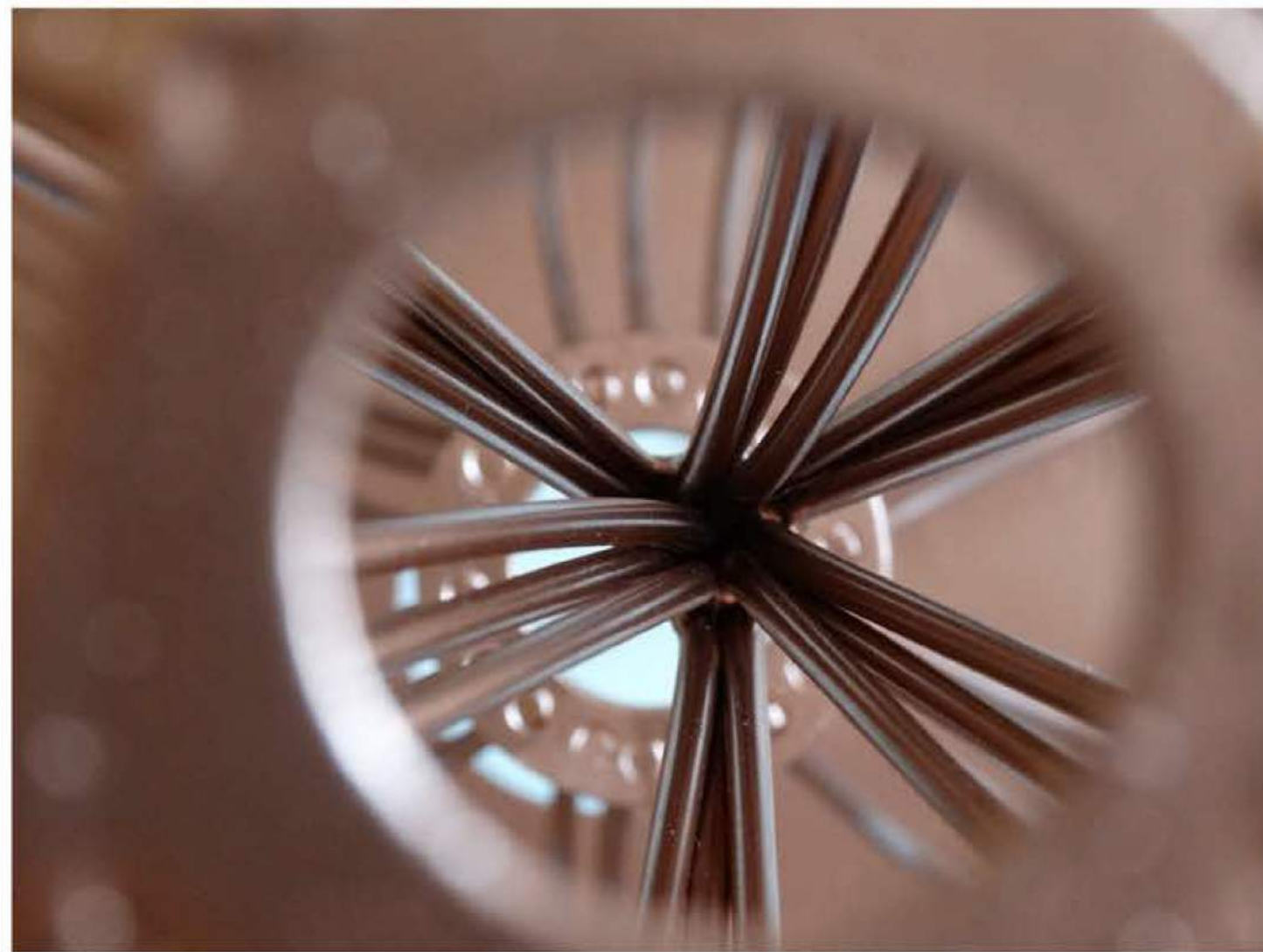
/ located in Prague / Czech Republic

/ Research on the material, light, reflection,
shapes and construction

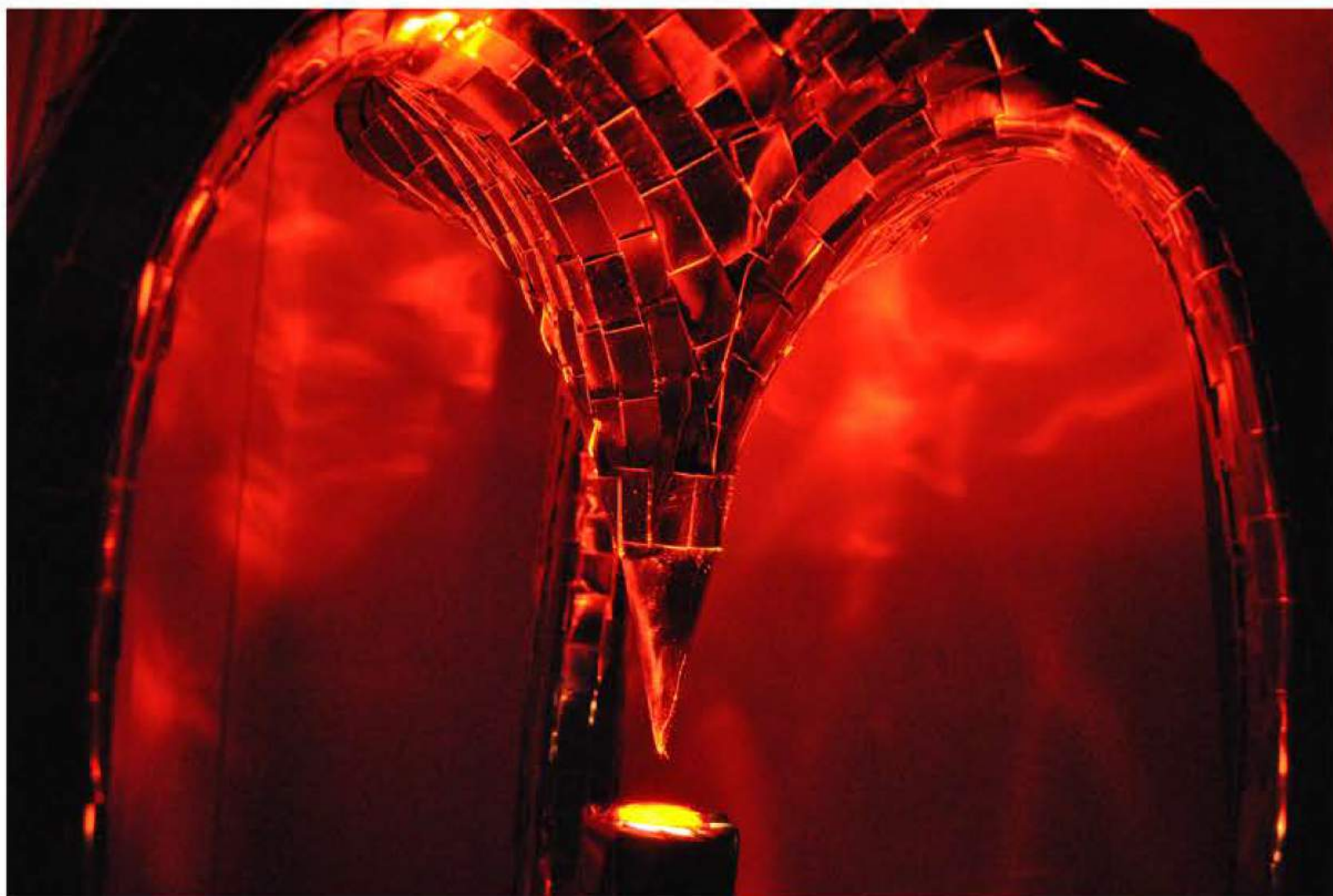
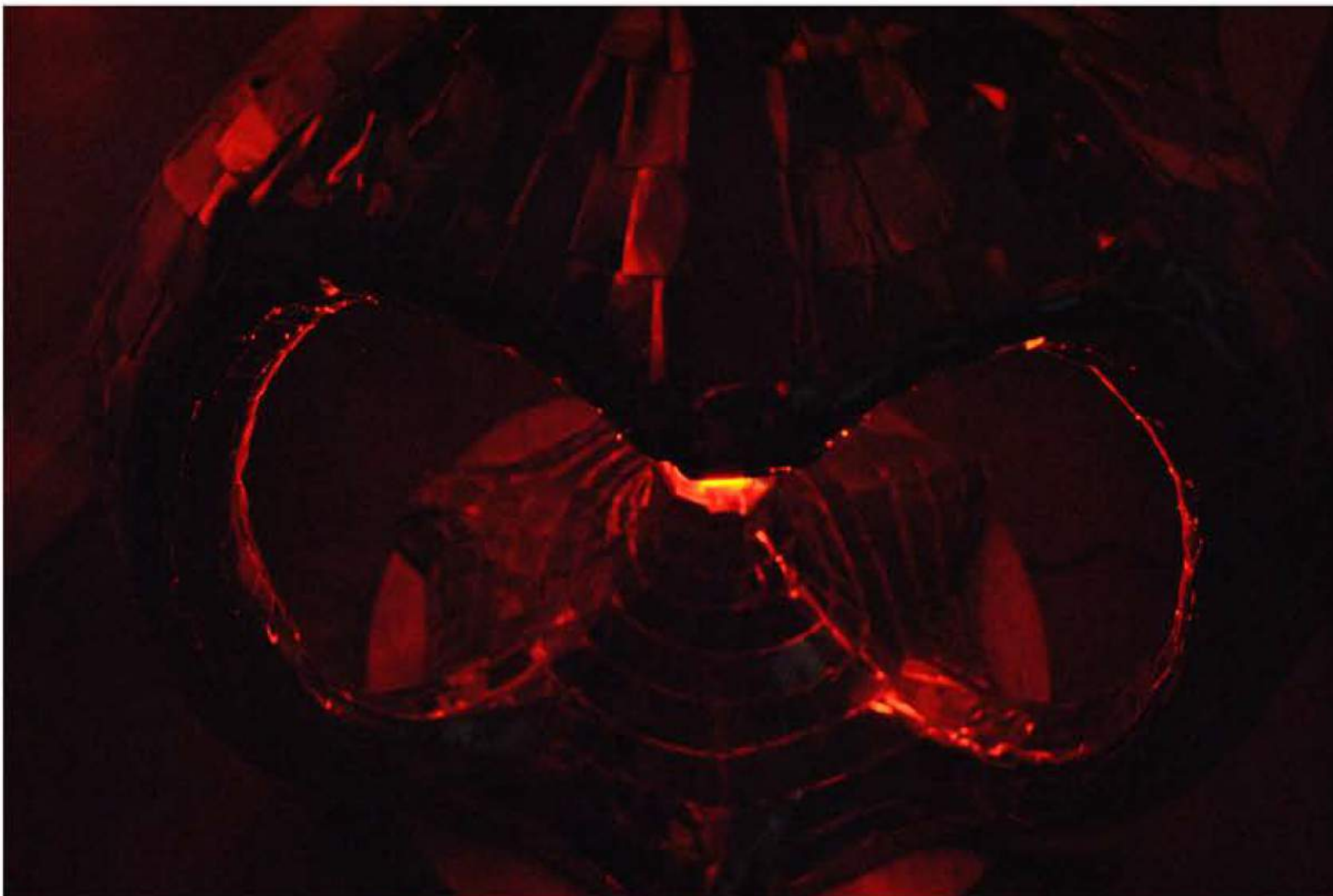
/ It's soft and rough in the same time,
smooth and sharp, heavy and light.

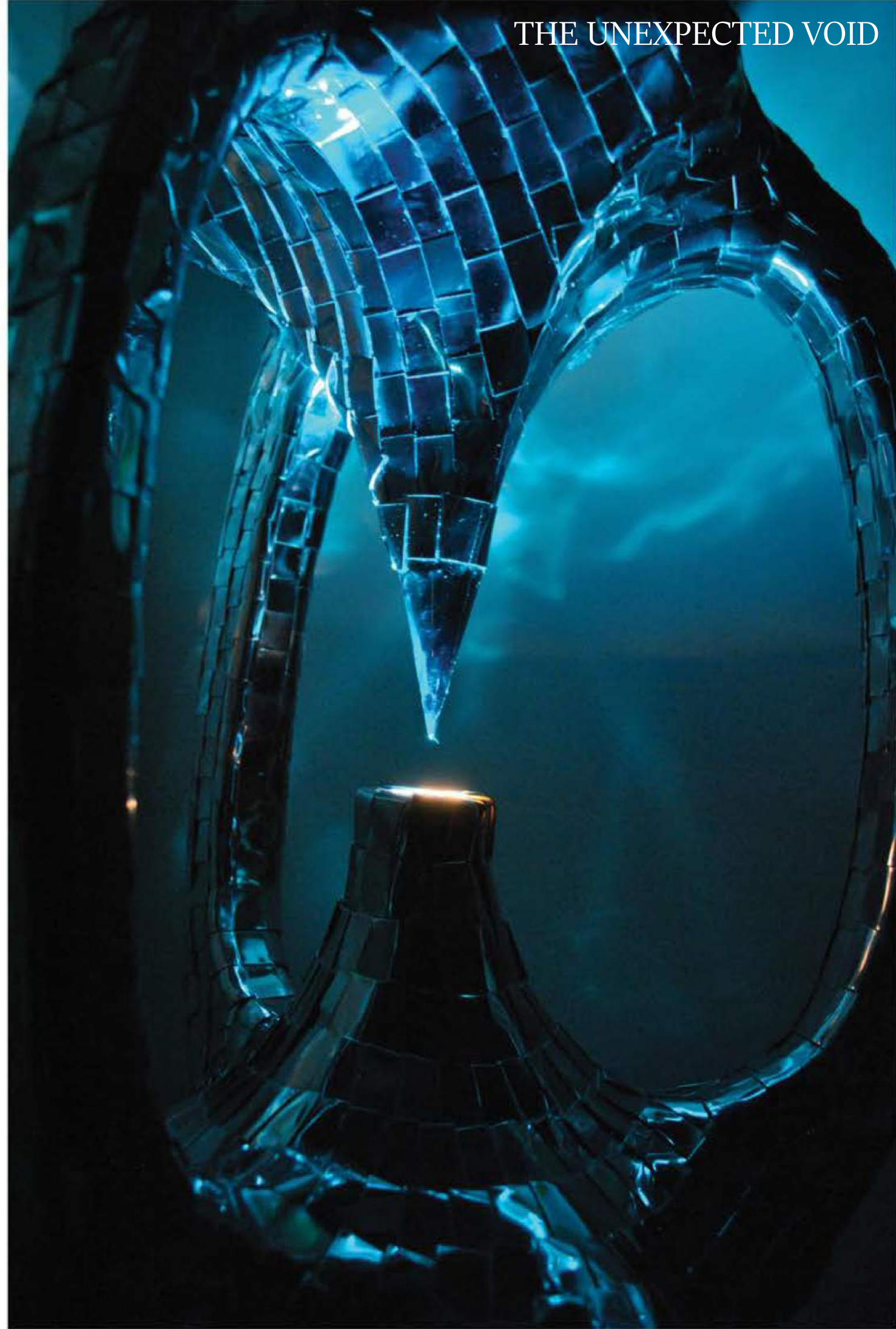
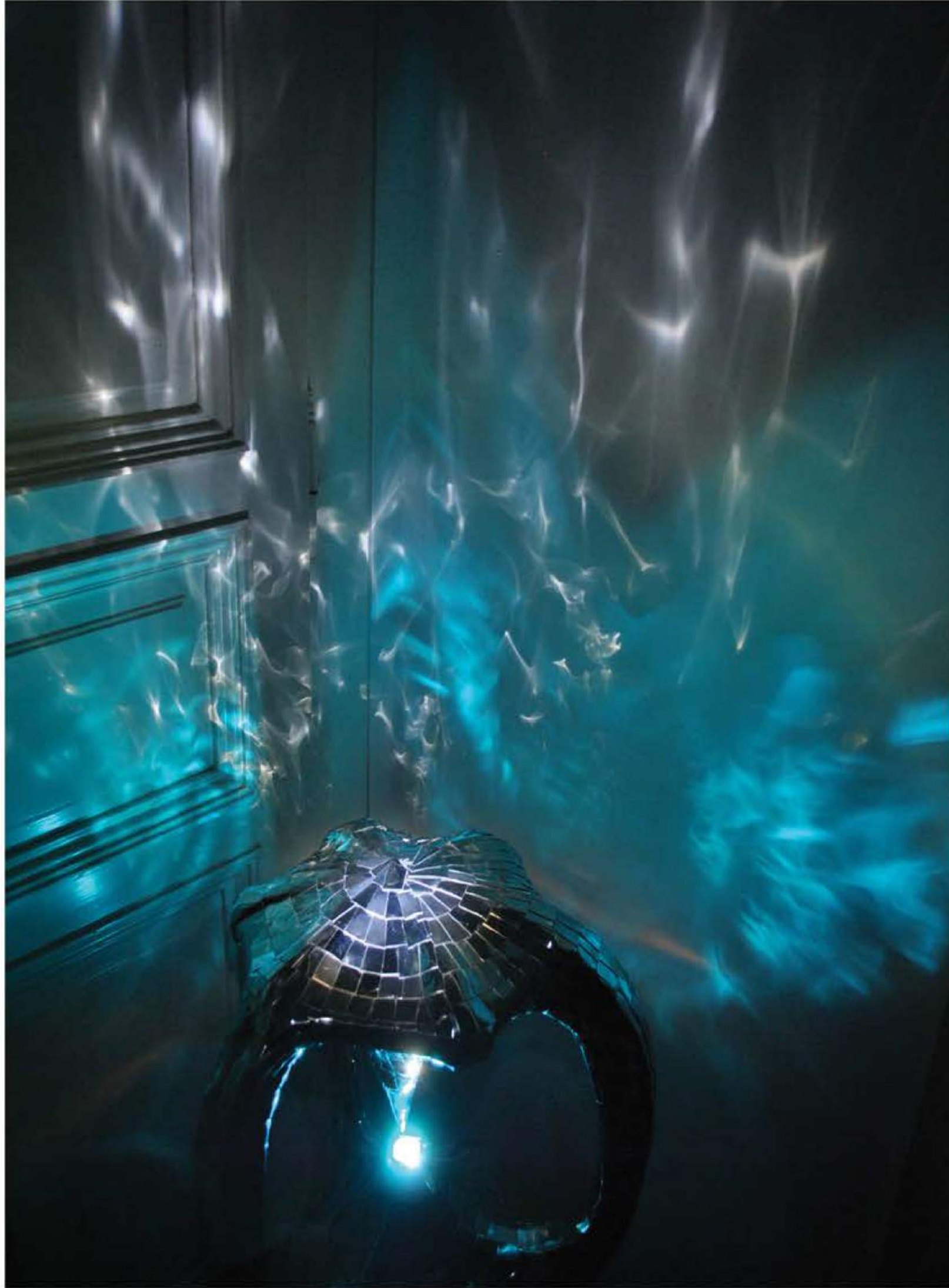
/ As the Universe is constantly expanding , my sculpture is expanding
with the light, and gives the sculpture an outer space image.

/ With metal and light I explored the architectural quality of this
model, and connected it to my previous work, as well as the final one,
the final membrane.

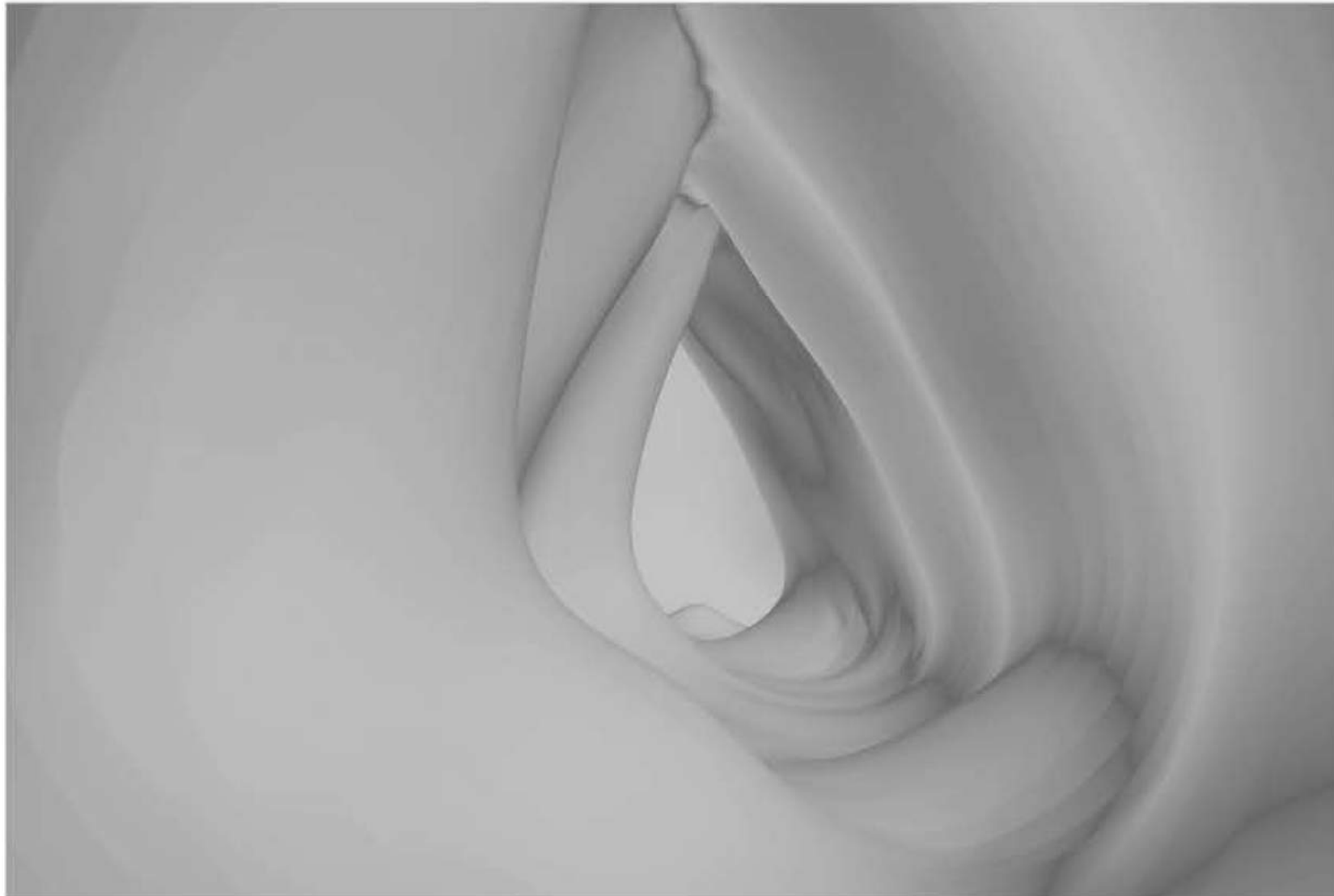


THE UNEXPECTED VOID





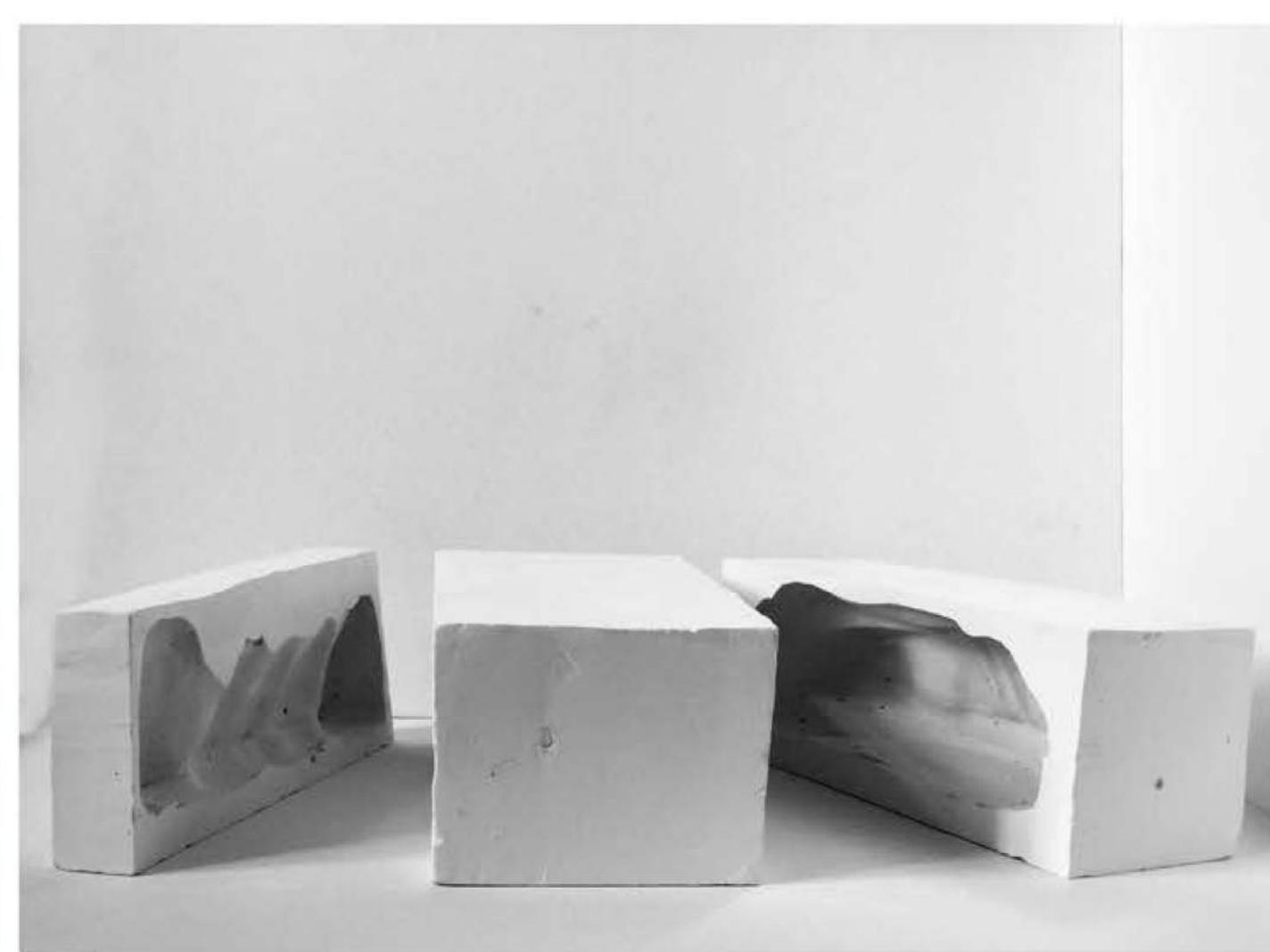
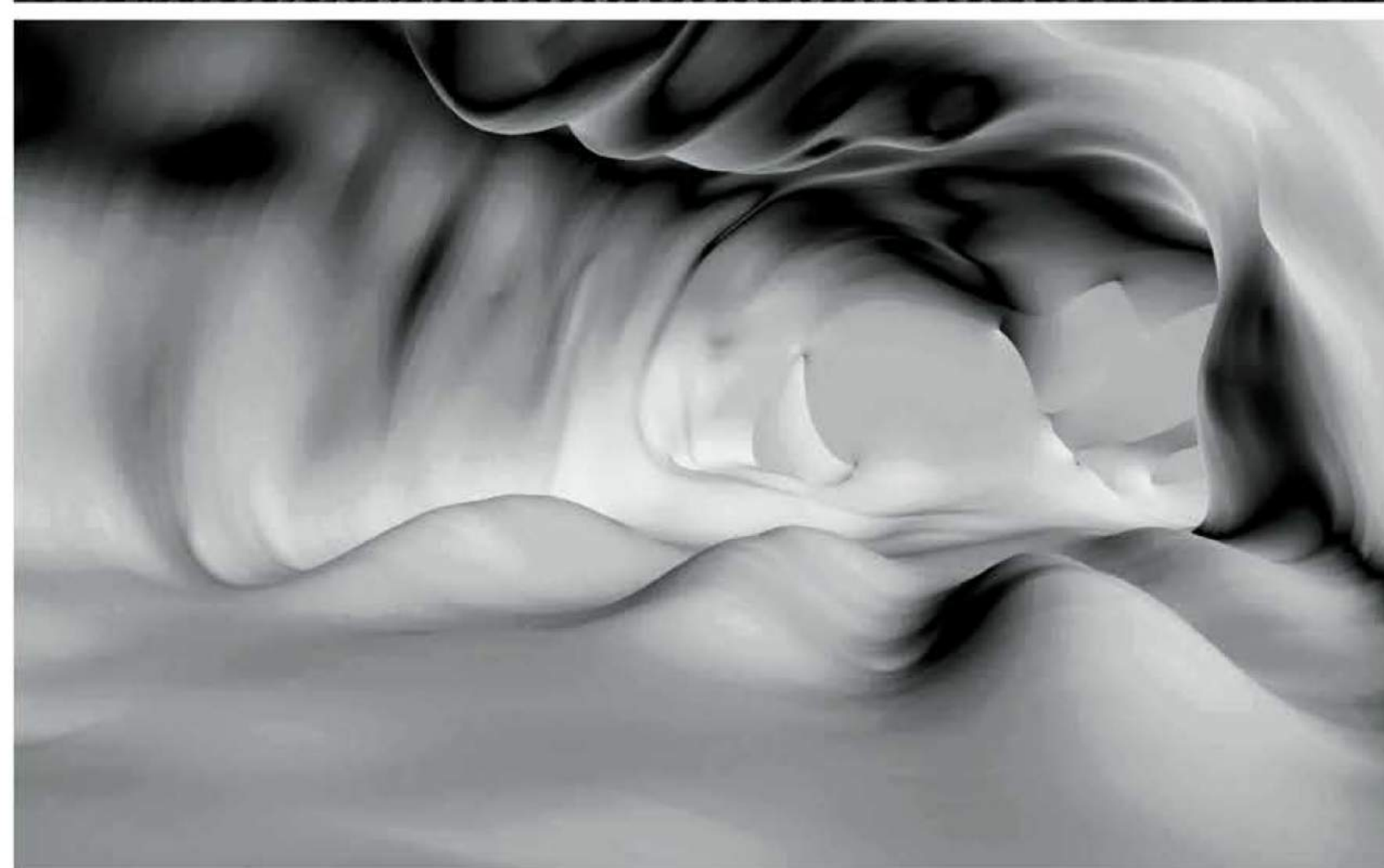
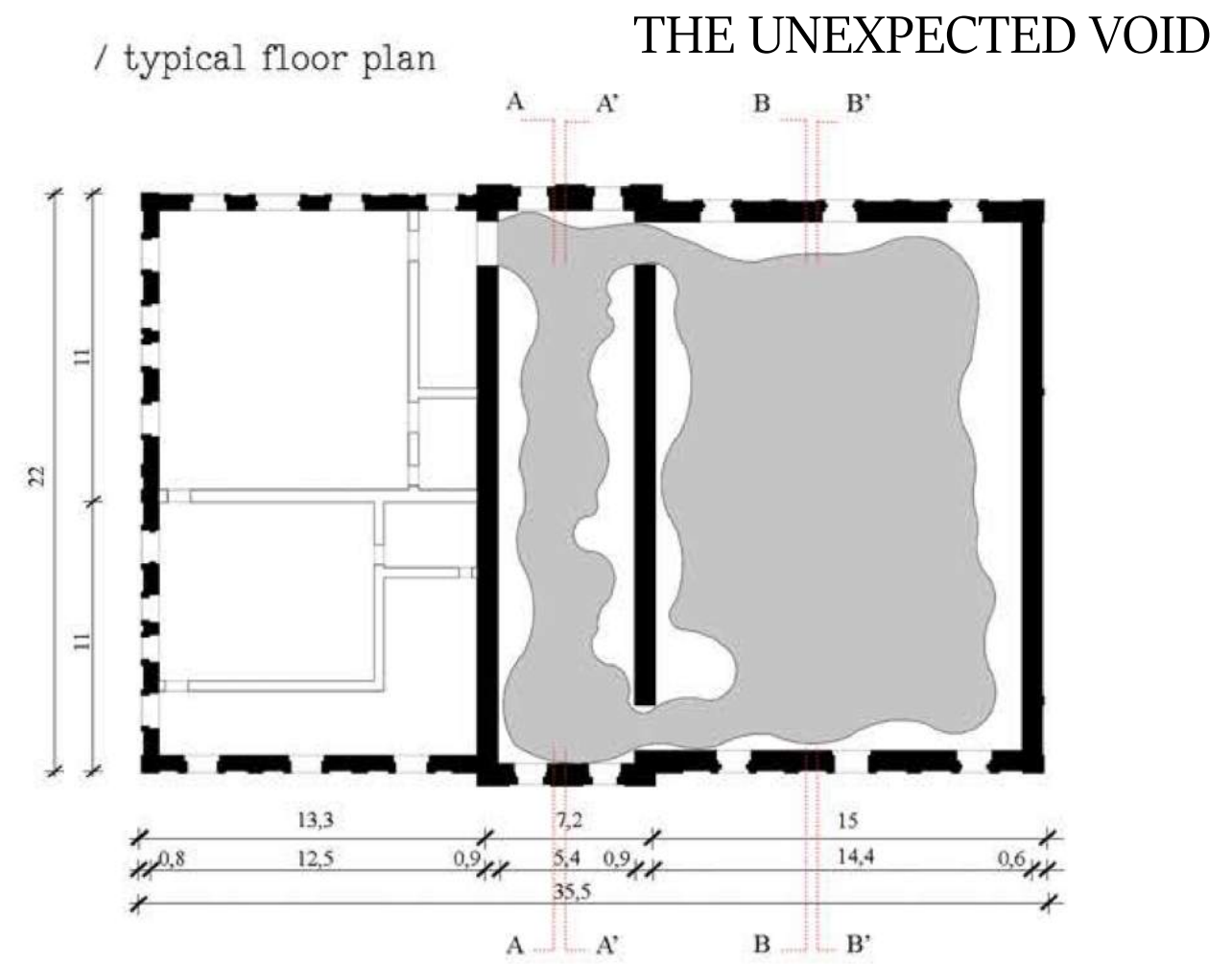
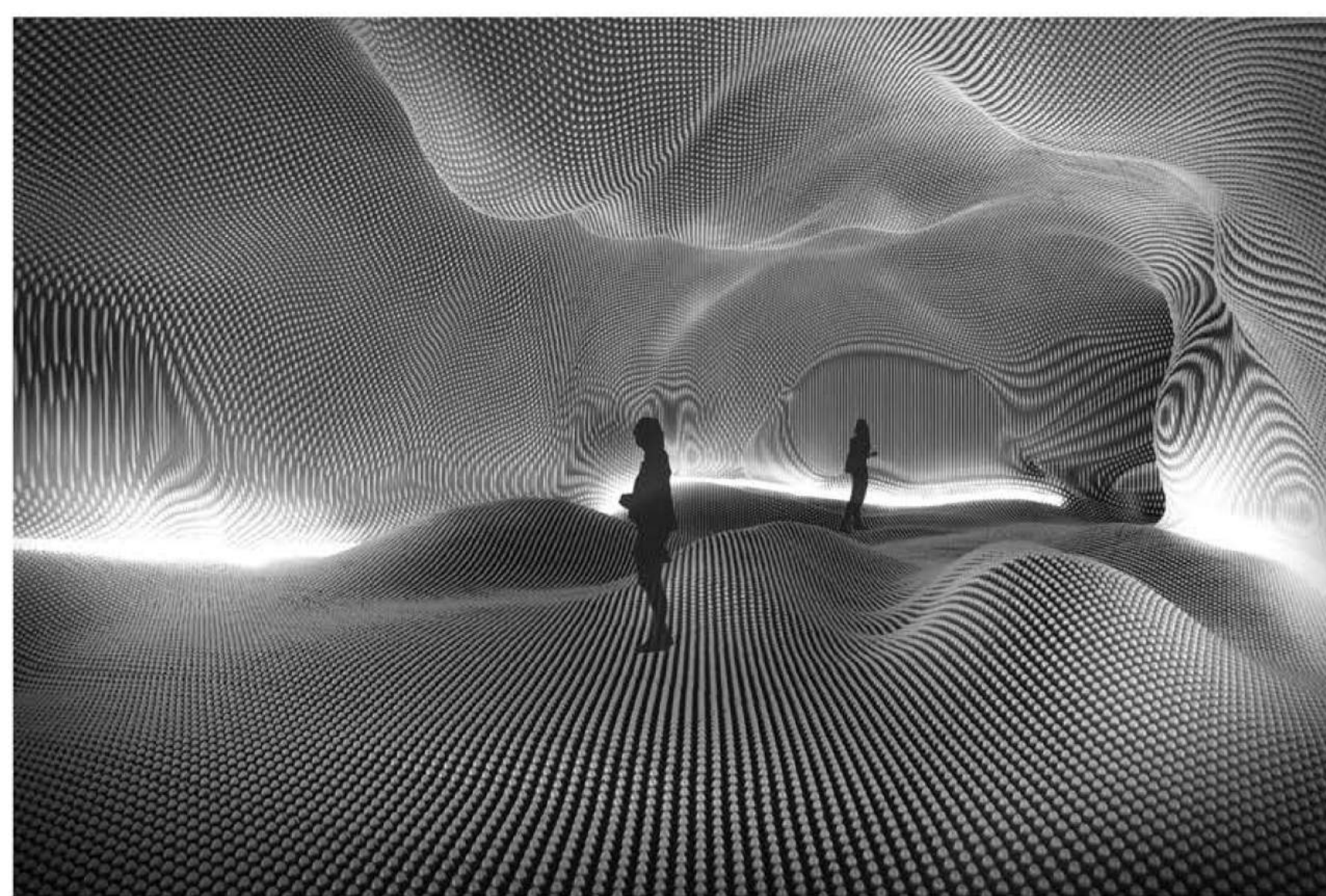
THE UNEXPECTED VOID

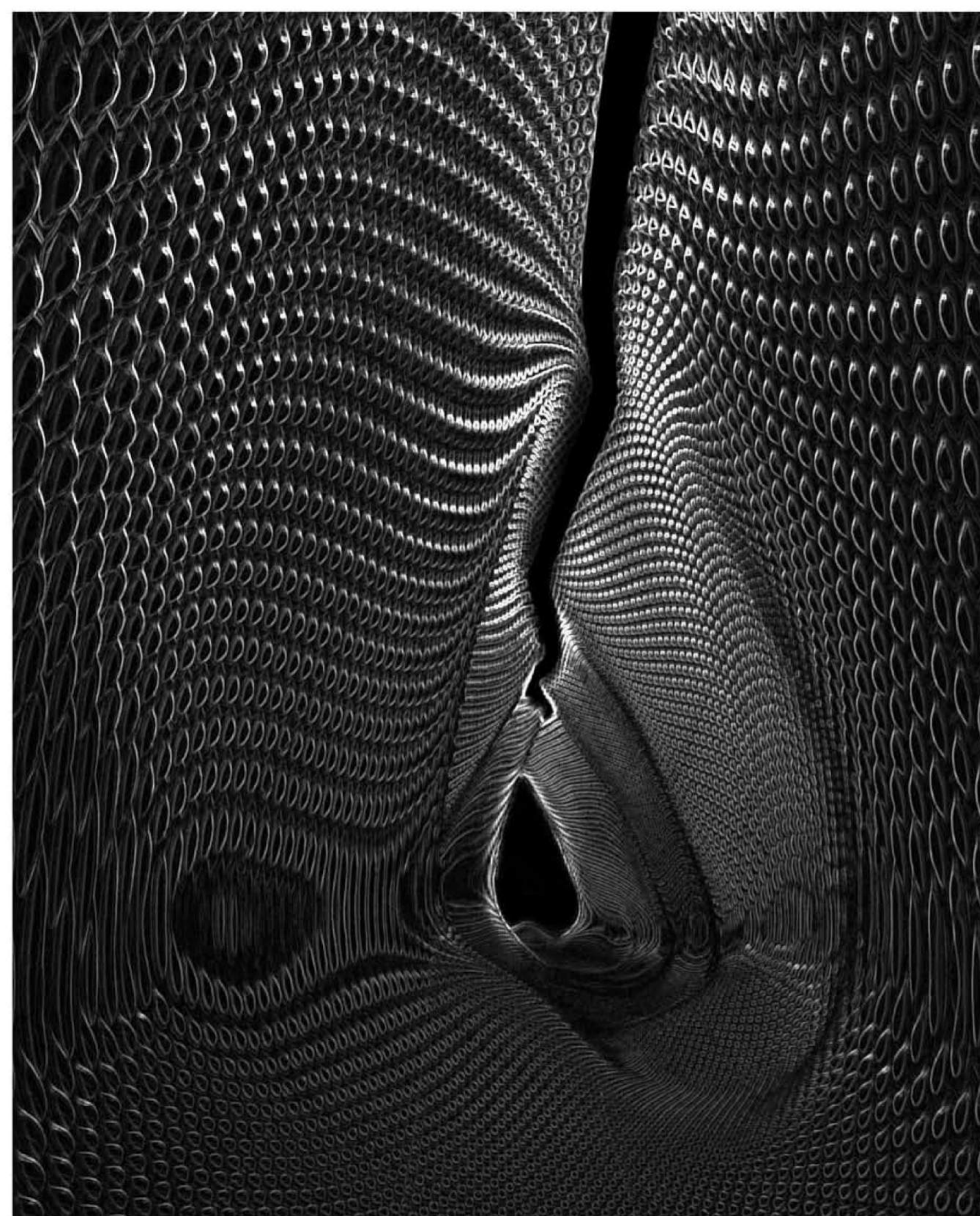


THE UNEXPECTED VOID / Master project

/ located in Prague / Czech Republic

- / If we start to explore the space it is inevitable to plunge deep into our emotions, and feelings, which leads us to gain new, modified ones and suddenly we are becoming the space.
- / Final part of the master project, which was created from the combination of fluid space from 'Parasitic Membrane', and materiality of 'Point of Creation'.
- / It's created in the existing slaughter house in the city Ostrava, in Czech Republic. The building with familiar design and material, and the unexpected moment begins when we step inside, with this final structure, which breaks the conventional definitions of architectural space, removing all the corners, edges, right angles, and combines floors, walls and ceilings into one fluid space, with modular system of reflective metal details.





THE UNEXPECTED VOID

